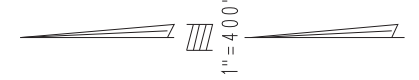


THIS MAP IS FOR THE PURPOSE OF AD VALOREM TAXATION ONLY.

E.1/2, Sec.12 T.3N.,R.5W., S.B.B.&M.

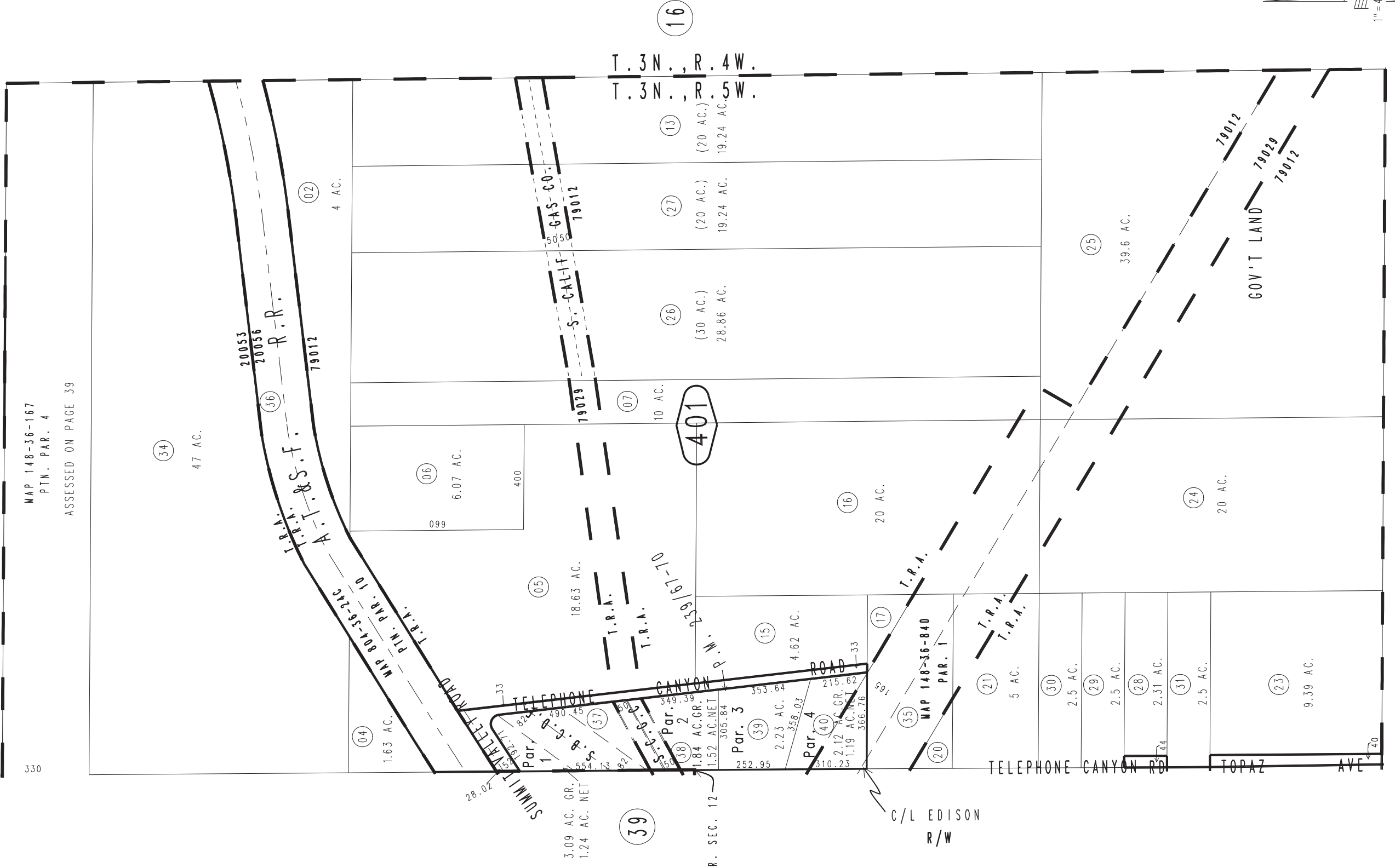
City of Hesperia
Hesperia Unified
Tax Rate Area
20053,20056
79012,79029

0405-40



14

17



MAP 148-36-167
PTN. PAR. 4
ASSESSED ON PAGE 39

330