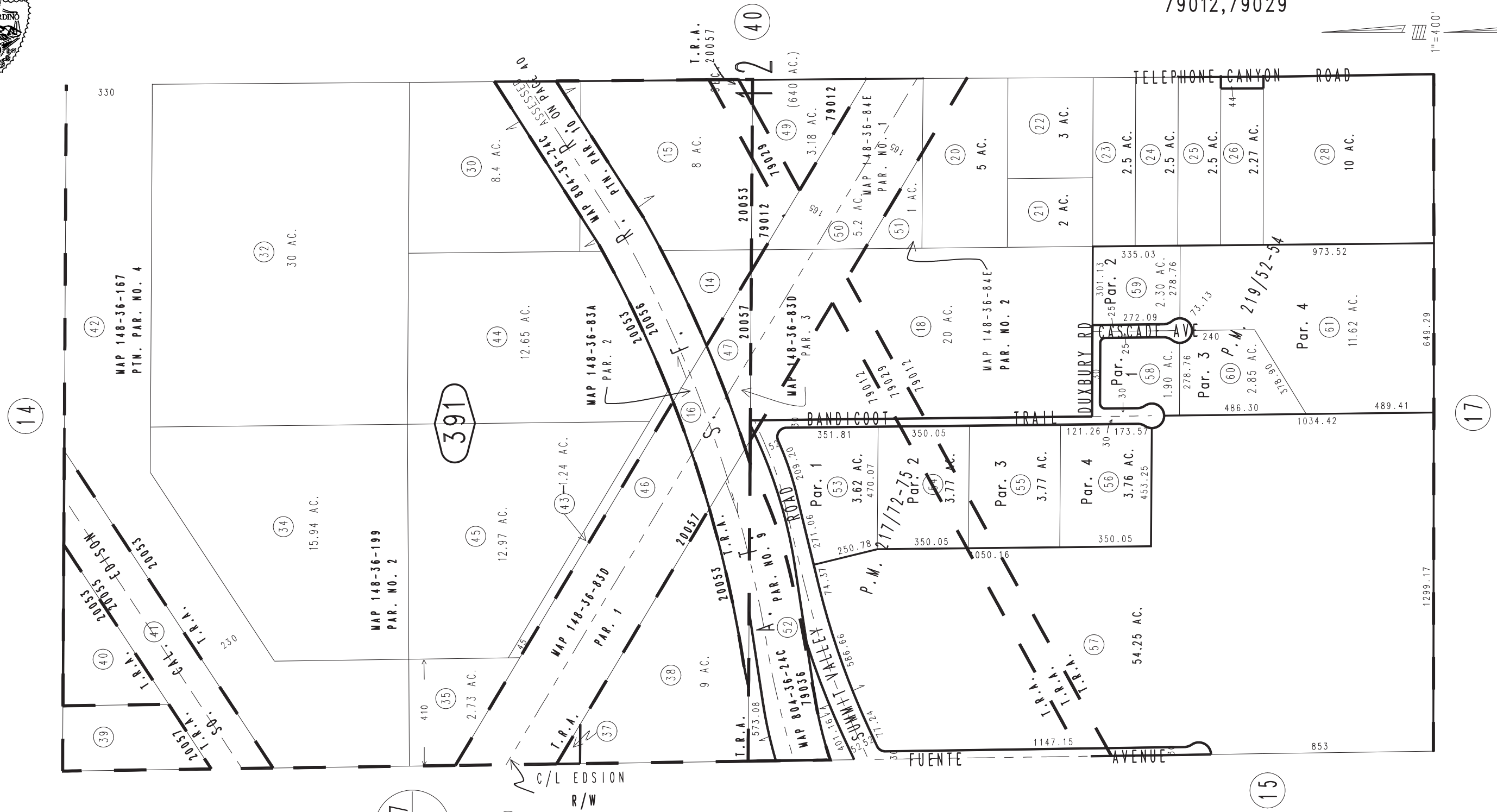
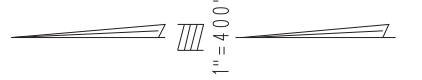


THIS MAP IS FOR THE PURPOSE OF AD VALOREM TAXATION ONLY.

W.1/2 Sec.12, T.3N.,R.5W., S.B.B.&M.

City of Hesperia
Hesperia Unified
Tax Rate Area
20053,20056,20057
79012,79029

0405-39



0357 / 04

- (35) MAP 148-36-182, PAR. 3
- (37) MAP 148-36-182, PAR. 4
- (39) MAP 148-36-167, PAR. 1
- (40) MAP 148-36-167, PAR. 2
- (41) MAP 148-36-167, PAR. 3
- (43) MAP 148-36-830, PAR. 2

February 2004

Parcel Map No. 16862, P.M. 219/52-54
Parcel Map No. 16863, P.M. 217/72-75

Assessor's Map
Book 0405 Page 39
San Bernardino County

REVISED
03/20/12 RU-MC
05/10/13 GW-MC