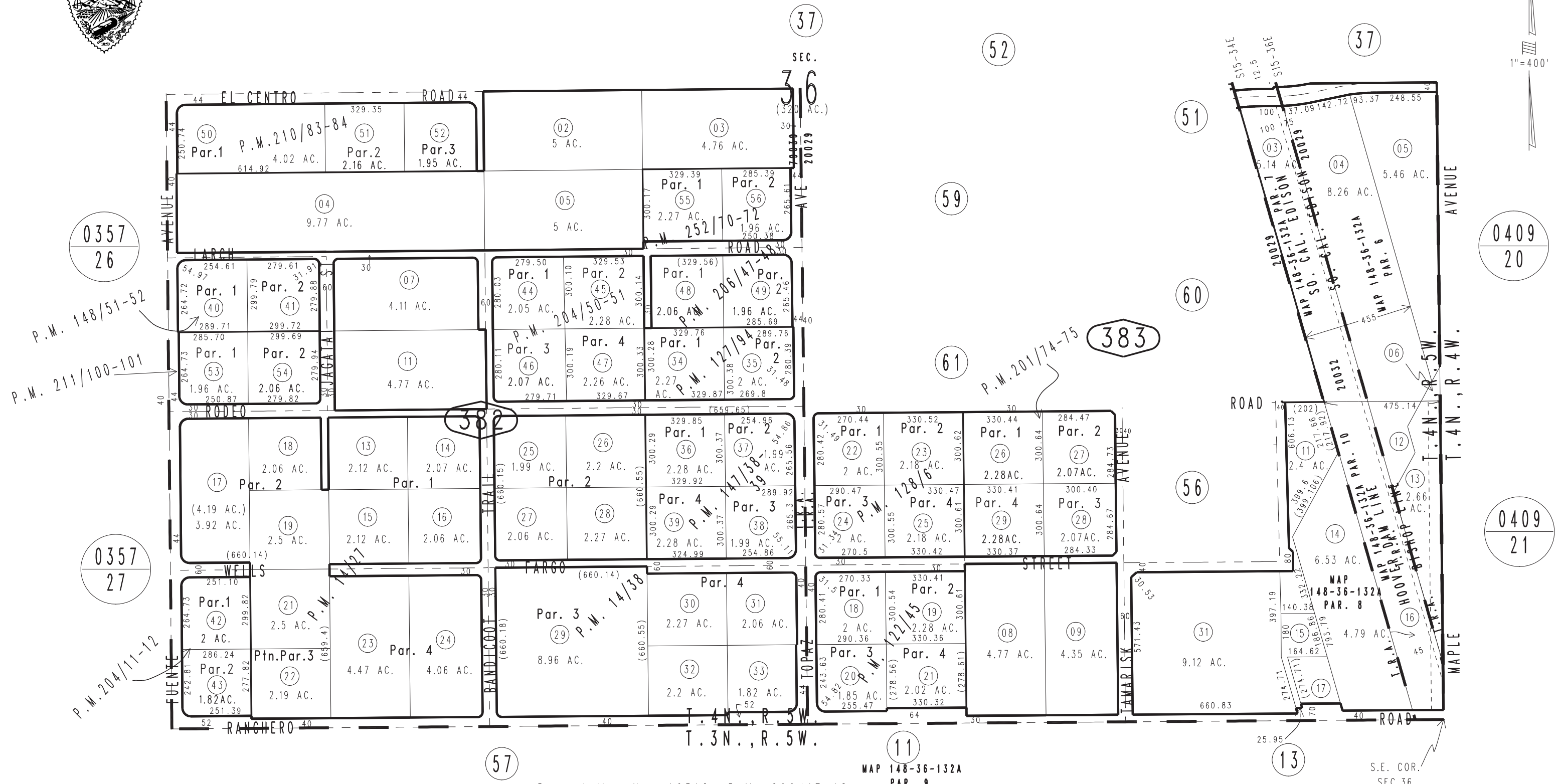


THIS MAP IS FOR THE PURPOSE OF AD VALOREM TAXATION ONLY.

S.1/2, Sec.36, T.4N.,R.5W, S.B.B.&M.

City of Hesperia
Hesperia Unified
Tax Rate Area
20029 20032
79039

0405-38



0357
26

P.M. 148/51-52
P.M. 211/100-101

0357
27

P.M. 204/11-12

57

37

52

59

61

383

51

60

56

0409
20

0409
21

11

13

Parcel Map No. 11405, P.M. 128/6
Parcel Map No. 11243, P.M. 127/94
Parcel Map No. 11048, P.M. 122/45
Parcel Map No. 1573, P.M. 14/38
Ptn.Parcel Map No. 1572, P.M. 14/27

Parcel Map No. 16312, P.M. 206/47-48
Parcel Map No. 16209, P.M. 204/50-51
Parcel Map No. 16162, P.M. 204/11-12
Parcel Map No. 16079, P.M. 201/74-75
Parcel Map No. 12406, P.M. 148/51-52
Parcel Map No. 12667, P.M. 147/38-39
Parcel Map No. 19923, P.M. 252/70-72
Parcel Map No. 16723, P.M. 211/100-101
Parcel Map No. 16098, P.M. 210/83-84

Assessor's Map
Book 0405 Page 38
San Bernardino County

REVISED
01/27/23 KA
12/01/23 XM
01/07/25 KC
01/31/25 RU