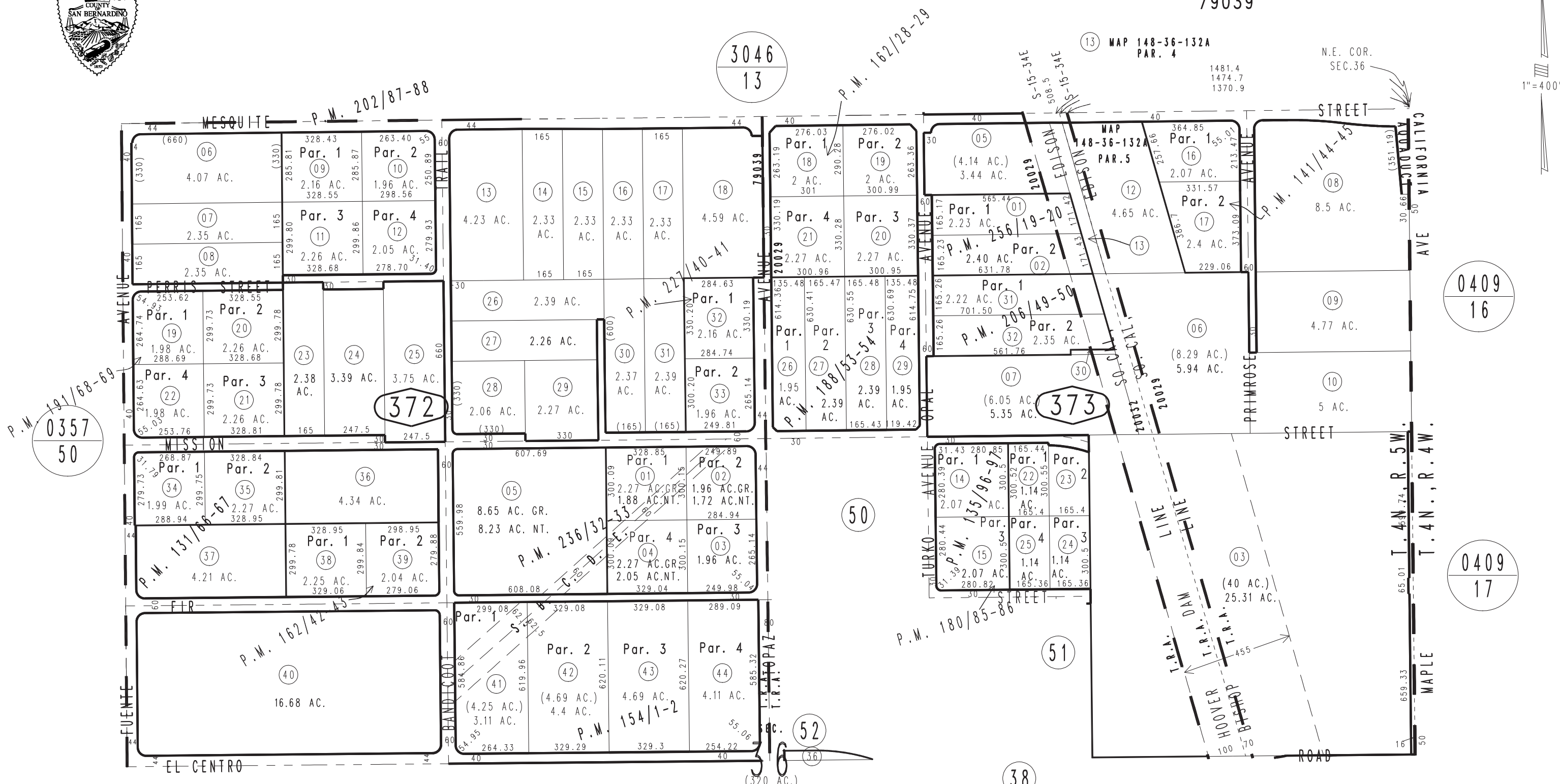


THIS MAP IS FOR THE PURPOSE OF AD VALOREM TAXATION ONLY.

N.1/2, Sec.36, T.4N.,R.5W., S.B.B.&M.

City of Hesperia  
Hesperia Unified  
Tax Rate Area  
20029 20032  
79039

0405-37



- Parcel Map No. 14855, P.M. 180/85-86
- Parcel Map No. 13686, P.M. 162/42-43
- Parcel Map No. 13058, P.M. 162/28-29
- Parcel Map No. 12217, P.M. 154/1-2
- Parcel Map No. 12147, P.M. 141/44-45
- Ptn. Parcel Map No. 11759, P.M. 135/96-97
- Parcel Map No. 10577, P.M. 131/66-67
- Parcel Map No. 20019, P.M. 254/36-37, Amended 256/19-20
- Parcel Map No. 19081, P.M. 236/32-33
- Parcel Map No. 17633, P.M. 227/40-41
- Parcel Map No. 16184, P.M. 206/49-50
- Parcel Map No. 16019, P.M. 202/87-88
- Parcel Map No. 15338, P.M. 191/68-69
- Parcel Map No. 15323, P.M. 188/53-54

Assessor's Map  
Book 0405 Page 37  
San Bernardino County

REVISED  
07/26/21 RU  
08/05/21 RU  
08/11/21 RU  
10/27/21 GW  
10/20/23 KA  
01/23/24 XM