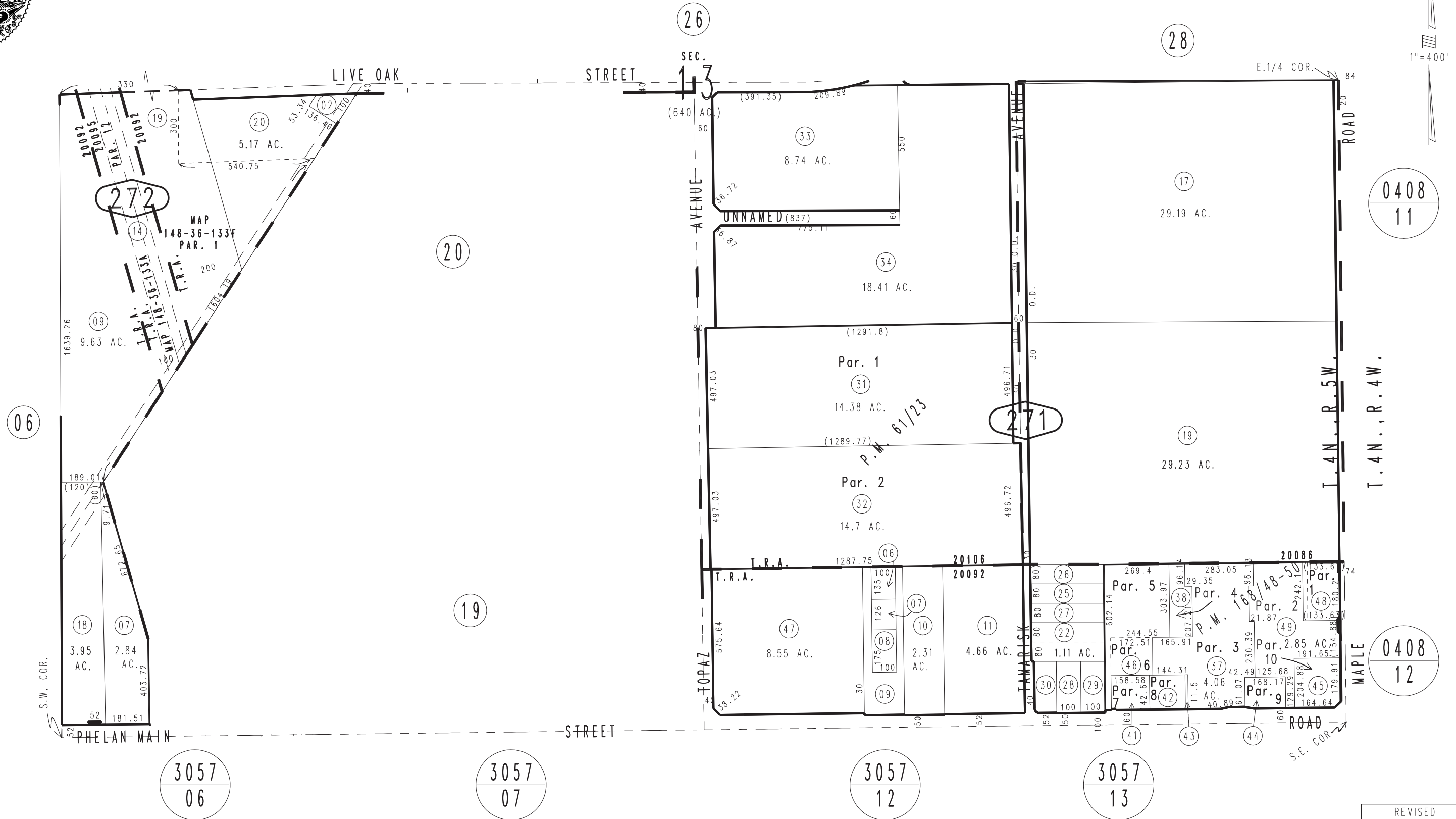


THIS MAP IS FOR THE PURPOSE OF AD VALOREM TAXATION ONLY.

Ptn. S.1/2, Sec.13, T.4N.,R.5W., S.B.B.&M.

City of Hesperia  
Tax Rate Area  
20086 20092  
20095 20106

0405-27



February 2004

Parcel Map No. 12373, P.M. 168/48-50  
Parcel Map No. 6413, P.M. 61/23

Assessor's Map  
Book 0405 Page 27  
San Bernardino County

REVISED  
04/15/21 RU