

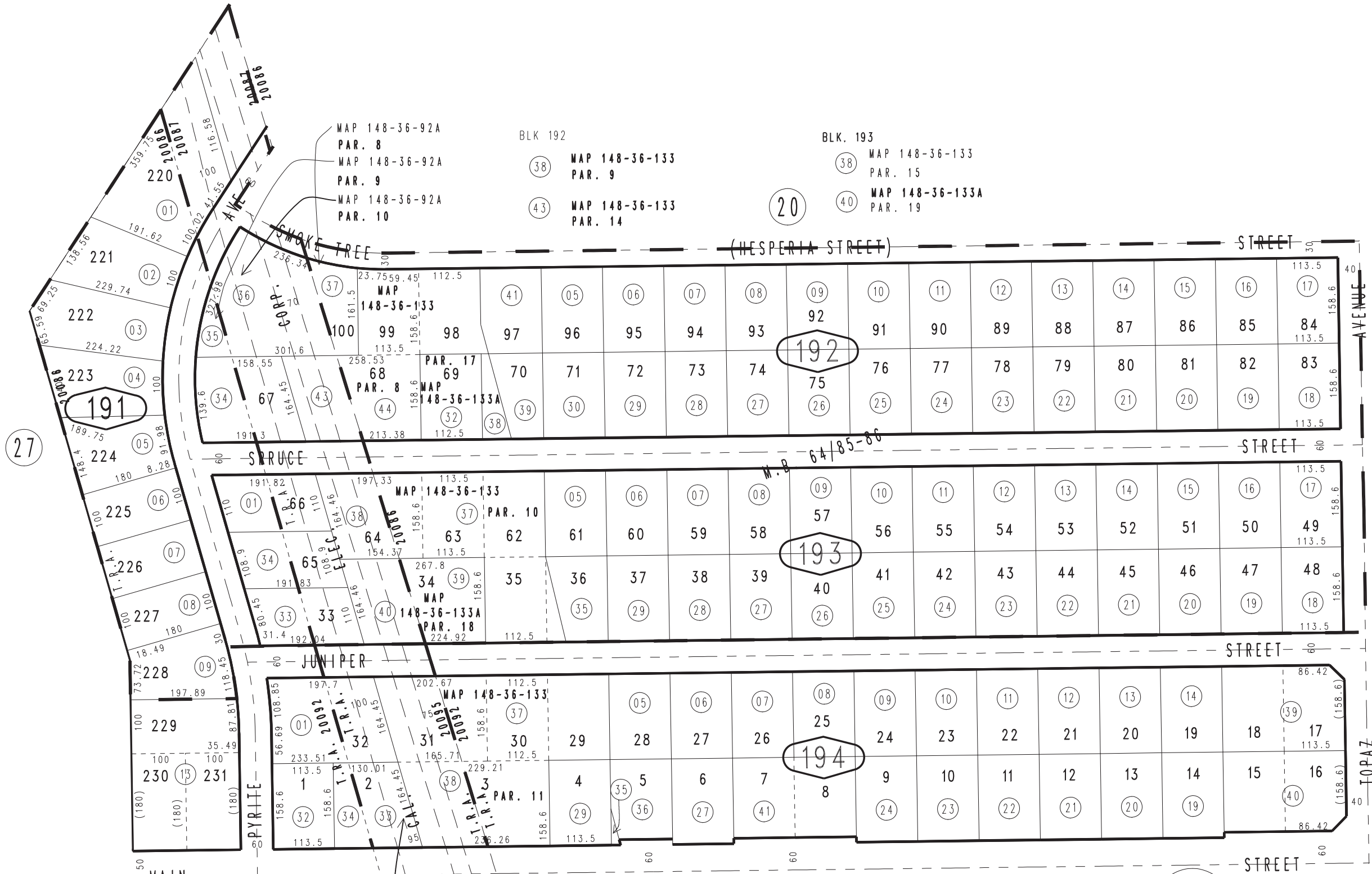
THIS MAP IS FOR THE PURPOSE OF AD VALOREM TAXATION ONLY.



Ptn. Tract No. 5375, M.B. 64/85-86

City of Hesperia
Tax Rate Area
20086,20087
20092,20095

0405-19



3057
06

3057
08

3057
07

- BLK 194
- (38) MAP 148-36-133 PAR 16
- (35) MAP 148-36-133 PAR 12
- (29) MAP 148-36-133A PAR 20

Ptn. S.W.1/4, Sec. 13
T.4N., R.5W.

Assessor's Map
Book 0405 Page 19
San Bernardino County