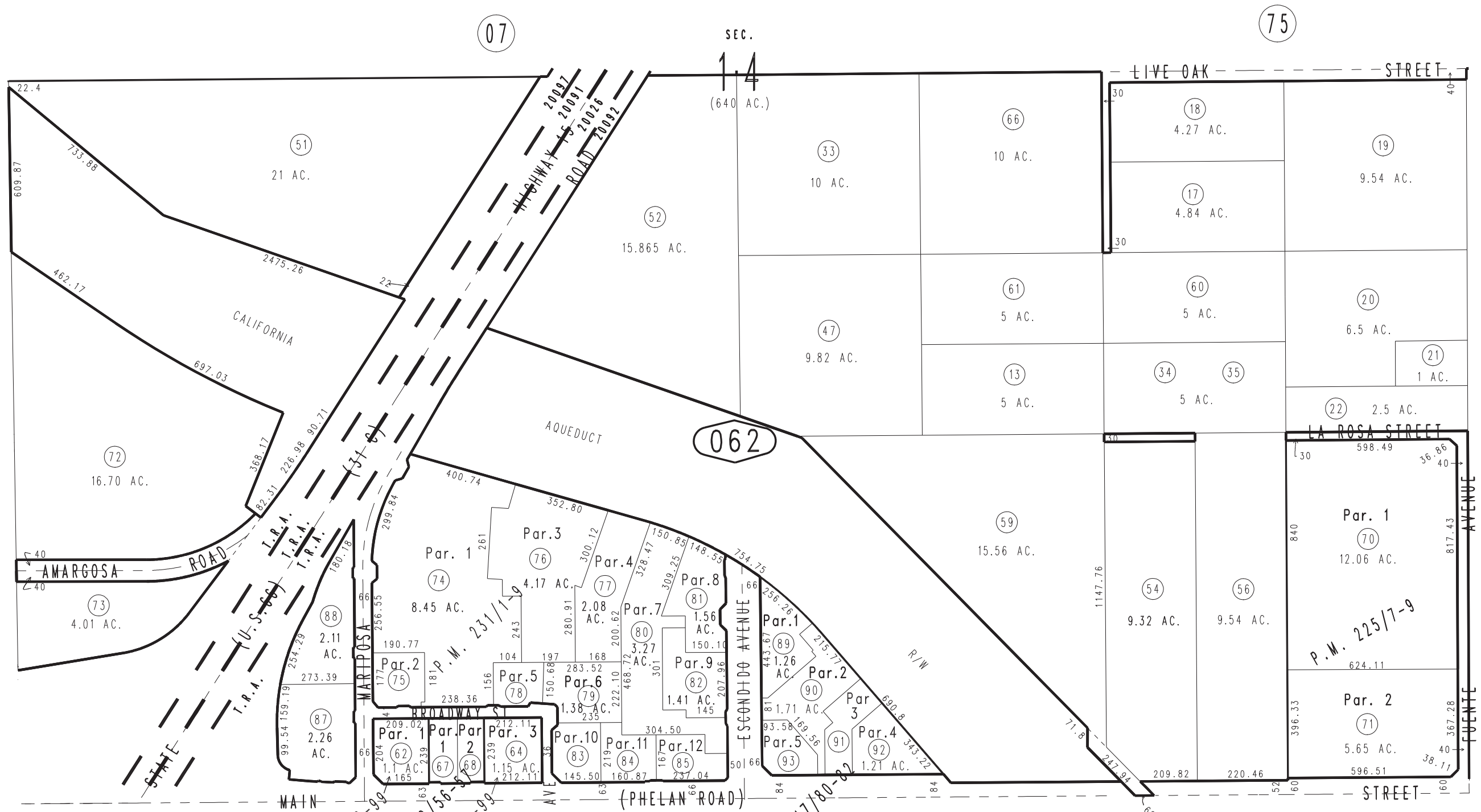
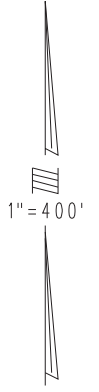


THIS MAP IS FOR THE PURPOSE
OF AD VALOREM TAXATION ONLY.

S.1/2, Sec.14, T.4N.,R.5W., S.B.B.&M.

City of Hesperia
Tax Rate Area
20026 20091
20092 20097

0405-06



3064
48

062

3057
01

- Parcel Map No. 19678, P.M. 247/80-82
- Parcel Map No. 18943, P.M. 231/1-9
- Parcel Map No. 18444, P.M. 225/7-9
- Parcel Map No. 16405, P.M. 212/56-57
- Parcel Map No. 14490, P.M. 181/98-99

February 2004

Assessor's Map
Book 0405 Page 06
San Bernardino County

REVISED
06/02/23 XM