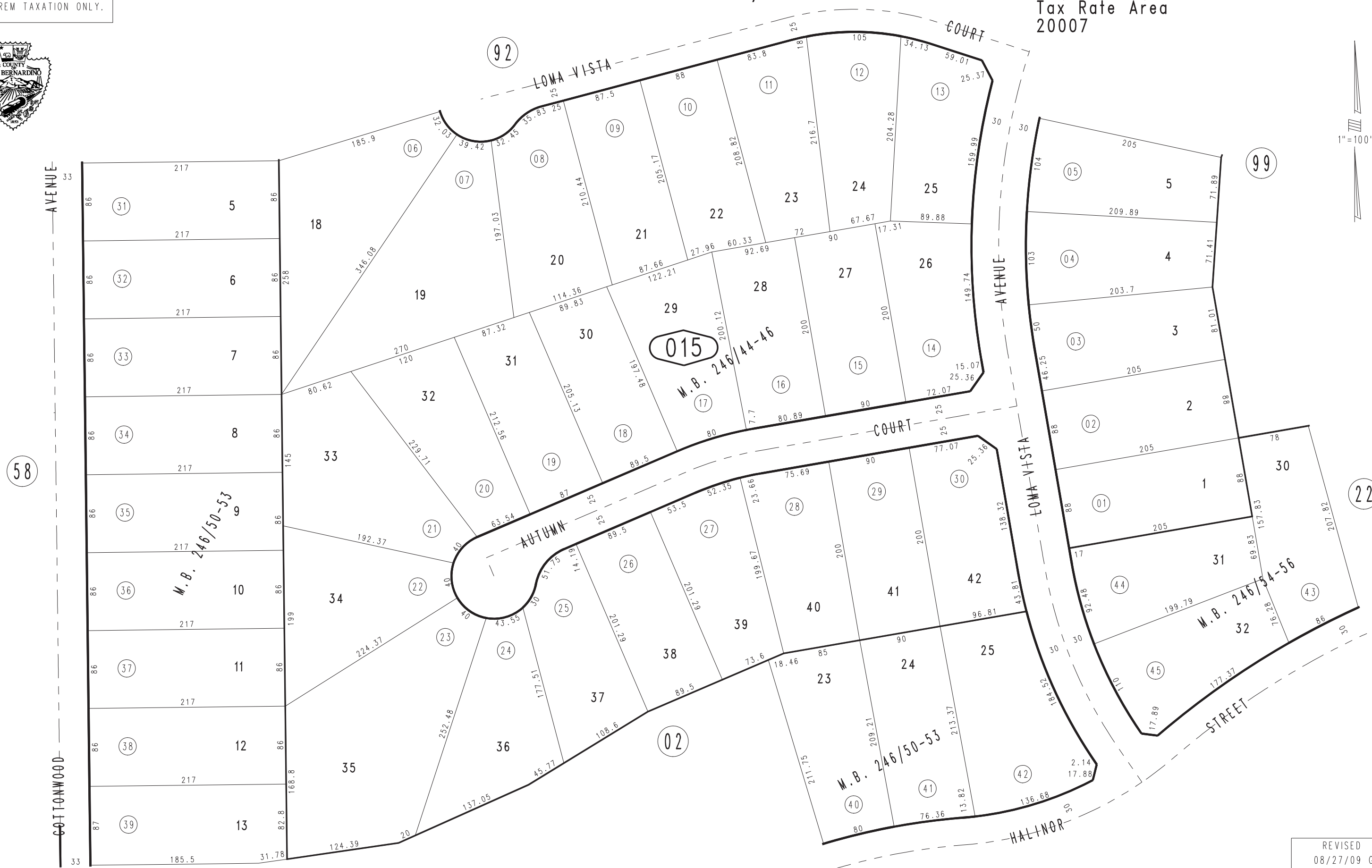


THIS MAP IS FOR THE PURPOSE
OF AD VALOREM TAXATION ONLY.

Ptn. Tract No. 13423-5, M.B. 246/44-46

City of Hesperia
Tax Rate Area
20007

0405-01



February 2004

Ptn. Tract No. 13423, M.B. 246/54-56
Ptn. Tract No. 13423-7, M.B. 246/50-53

Ptn. S.E.1/4, Sec. 6
T.3N., R.4W.

Assessor's Map
Book 0405 Page 01
San Bernardino County

REVISED
08/27/09 GW