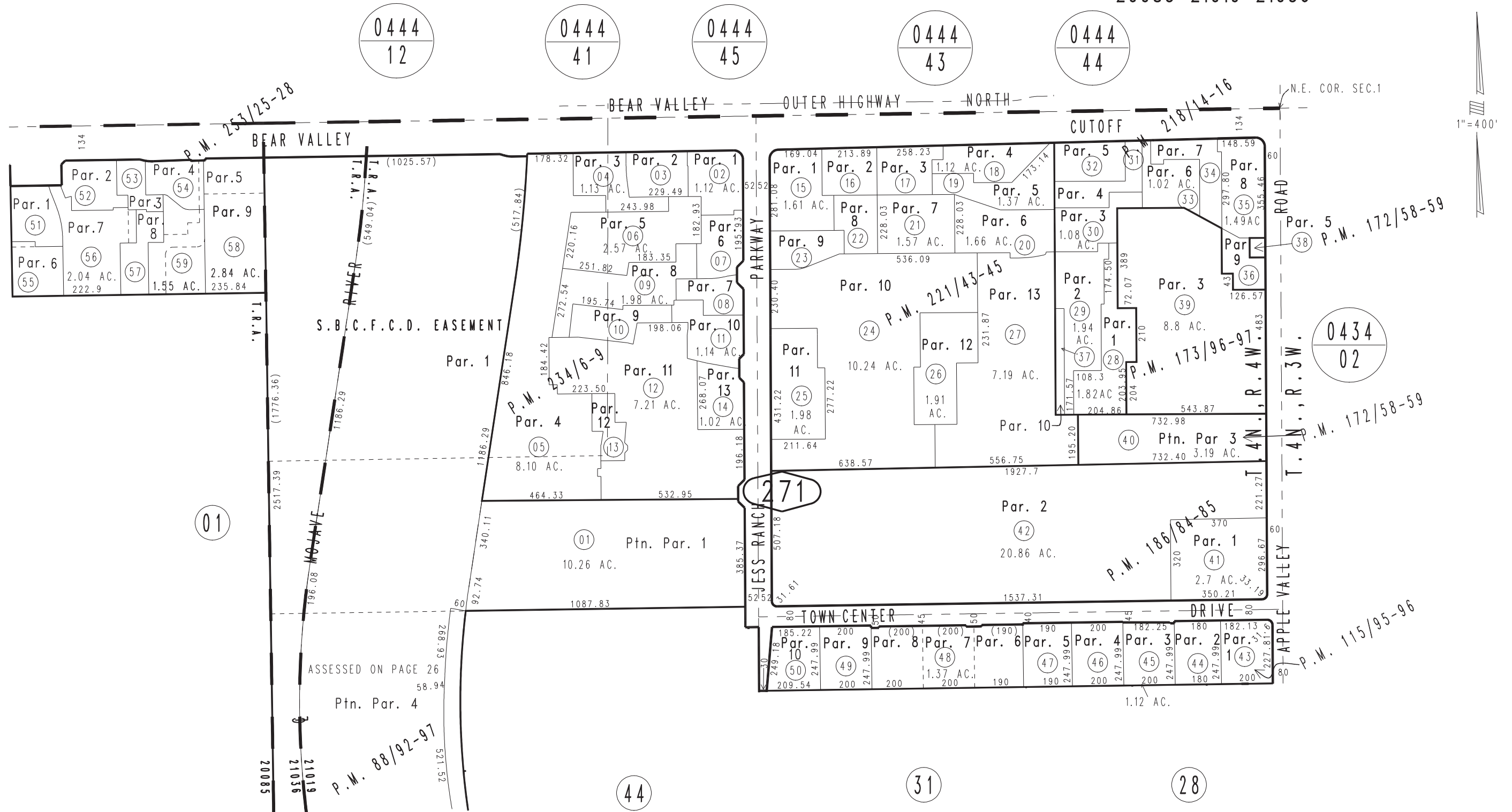


THIS MAP IS FOR THE PURPOSE OF AD VALOREM TAXATION ONLY.

Ptn. Parcel Map No. 8633, P.M. 88/92-97

Town of Apple Valley 0399-27
Tax Rate Area
20085 21019 21036



- Parcel Map No. 19997, P.M. 253/25-28
- Parcel Map No. 18416, P.M. 234/6-9
- Parcel Map No. 17838, P.M. 221/43-45
- Parcel Map No. 16429, P.M. 218/14-16
- Parcel Map No. 15194, P.M. 186/84-85
- Ptn. Parcel Map No. 14594, P.M. 173/96-97
- Ptn. Parcel Map No. 14186, P.M. 172/58-59
- Parcel Map No. 9651, P.M. 115/95-96

September 2010 KC

Ptn. E.3/4 Fractional Sec.1
T.4N.,R.4W., S.B.B.&M.

Assessor's Map
Book 0399 Page 27
San Bernardino County

REVISED
02/29/24 KA
08/30/24 KC