

THIS MAP IS FOR THE PURPOSE OF AD VALOREM TAXATION ONLY.

Ptn. Tract No. 5181, M.B. 61/90-102

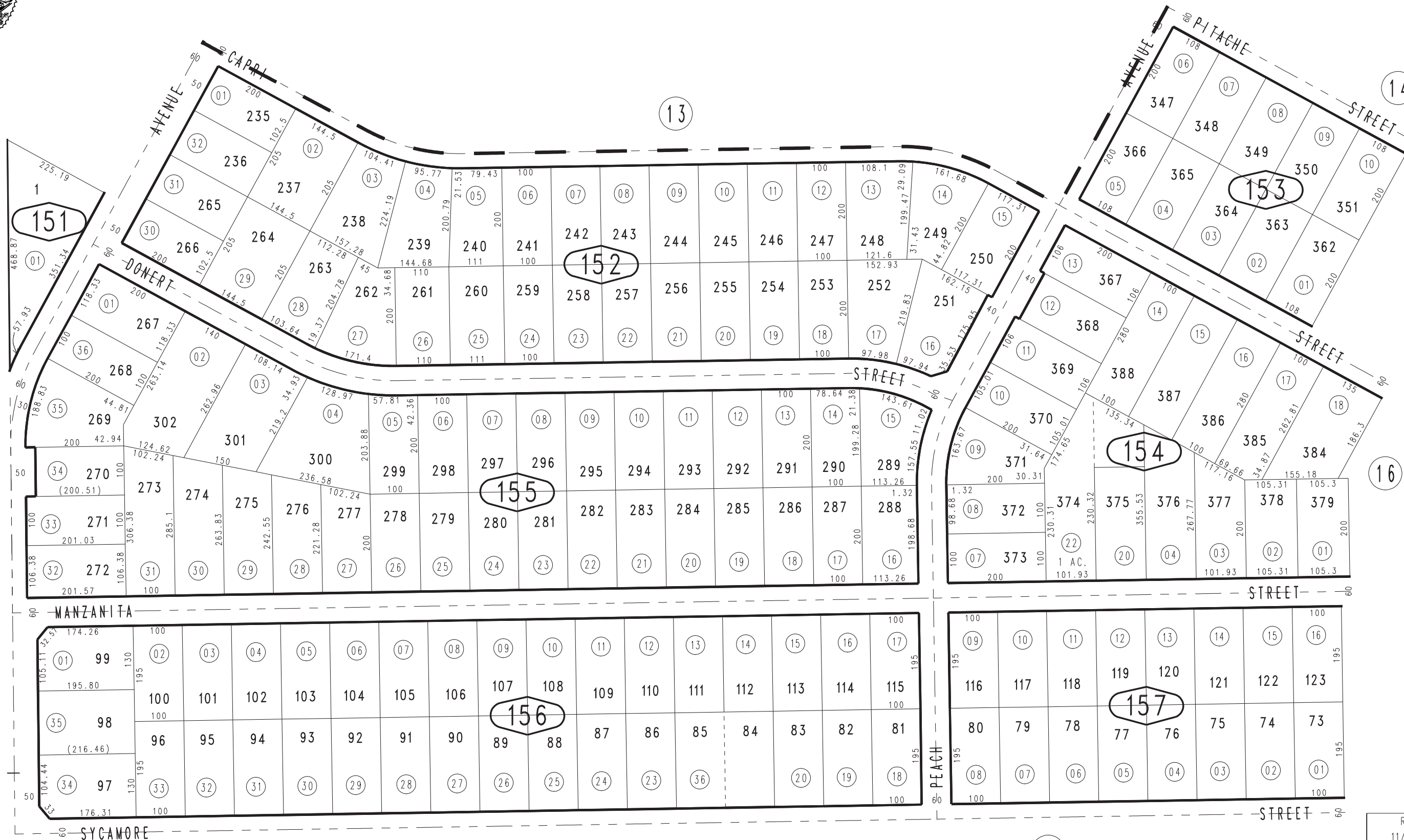
City of Hesperia
Tax Rate Area
20088

0399-15



0415
01

0415
26



17

18

Ptn. N.W.1/4, Sec. 2
T.4N., R.4W.

Assessor's Map
Book 0399 Page 15
San Bernardino County

REVISED
11/13/21 RU
11/23/21 KA
09/29/22 KA
12/19/23 KA