

THIS MAP IS FOR THE PURPOSE OF AD VALOREM TAXATION ONLY.



Ptn. Fractional Sec.2, T.4N.,R.4W., S.B.B.&M.

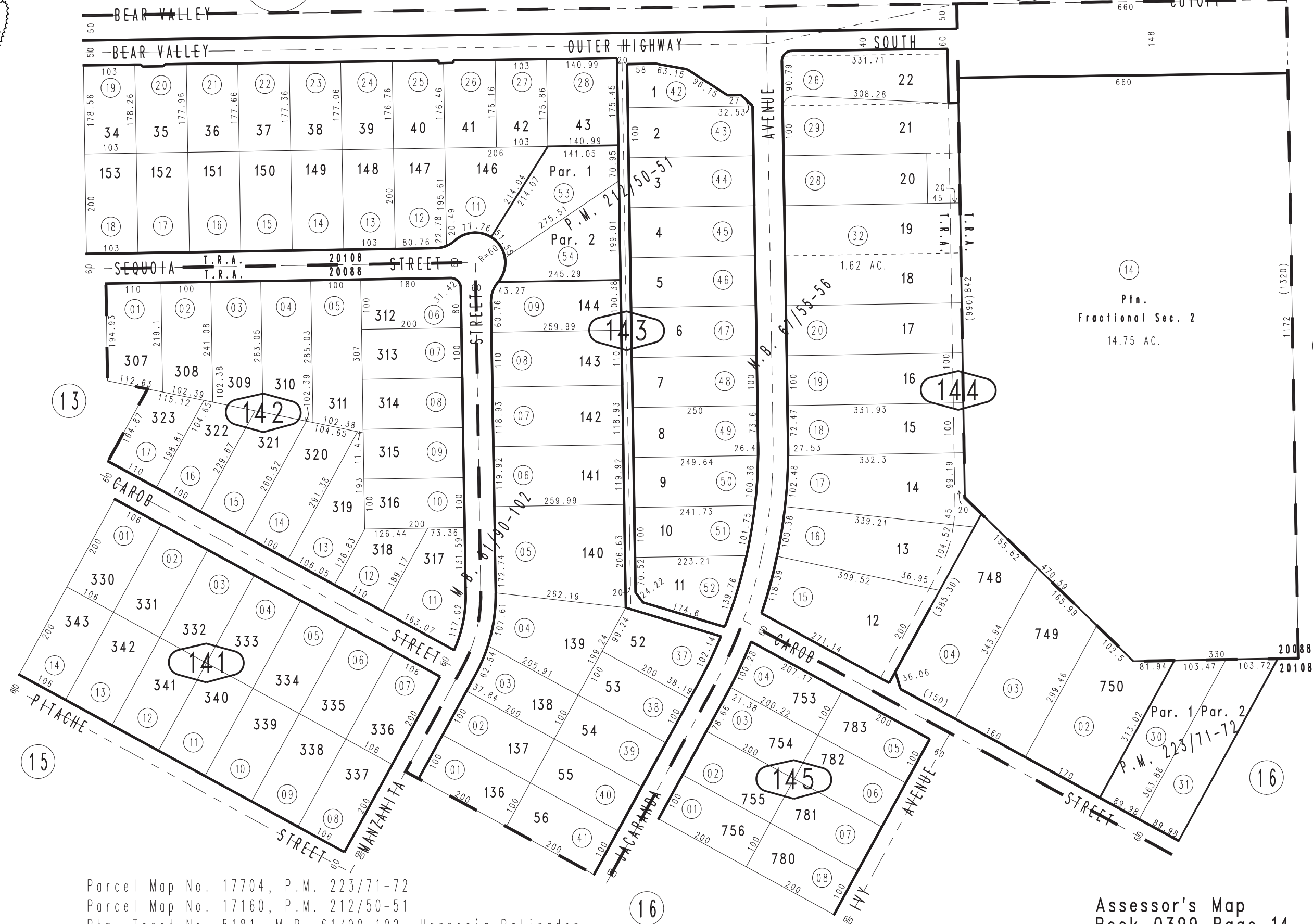
City of Hesperia
Tax Rate Area
20088 20108

0399-14

0482
26

0482
02

N.E. COR. SEC.2



Parcel Map No. 17704, P.M. 223/71-72
Parcel Map No. 17160, P.M. 212/50-51
Ptn. Tract No. 5181, M.B. 61/90-102, Hesperia Palisades
Tract No. 5420, M.B. 67/55-56

Assessor's Map
Book 0399 Page 14
San Bernardino County

REVISED
10/15/09 KC
03/17/11 RU