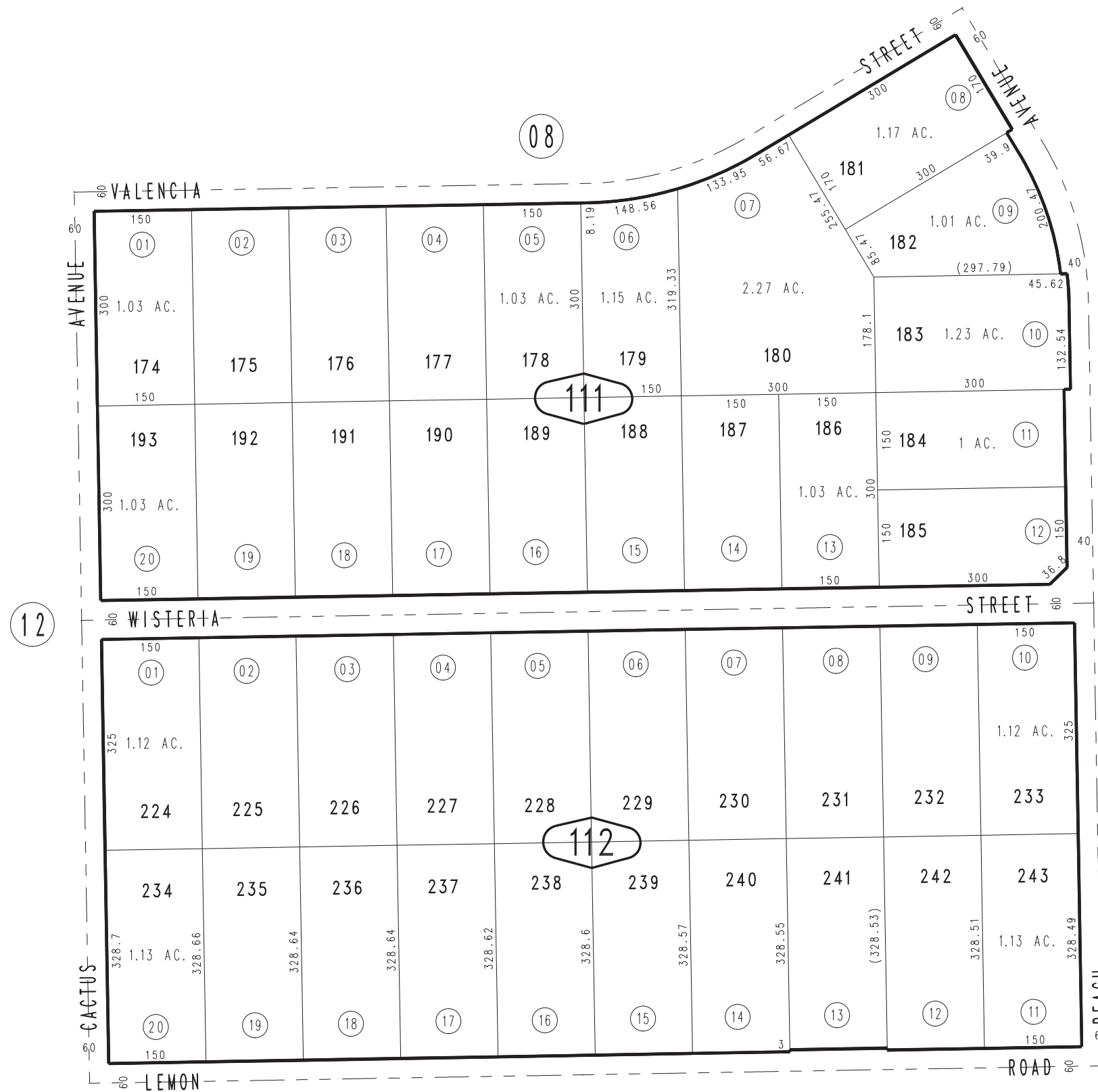


THIS MAP IS FOR THE PURPOSE
OF AD VALOREM TAXATION ONLY.

Ptn. Tract No. 5180, M.B. 62/1-5

City of Hesperia
Tax Rate Area
20090

0399-11



0411
02

0411
03

Ptn. S.1/2, Sec. 11
T.4N., R.4W.

Assessor's Map
Book 0399 Page 11
San Bernardino County

REVISED
05/05/15 GW
01/14/16 RU