

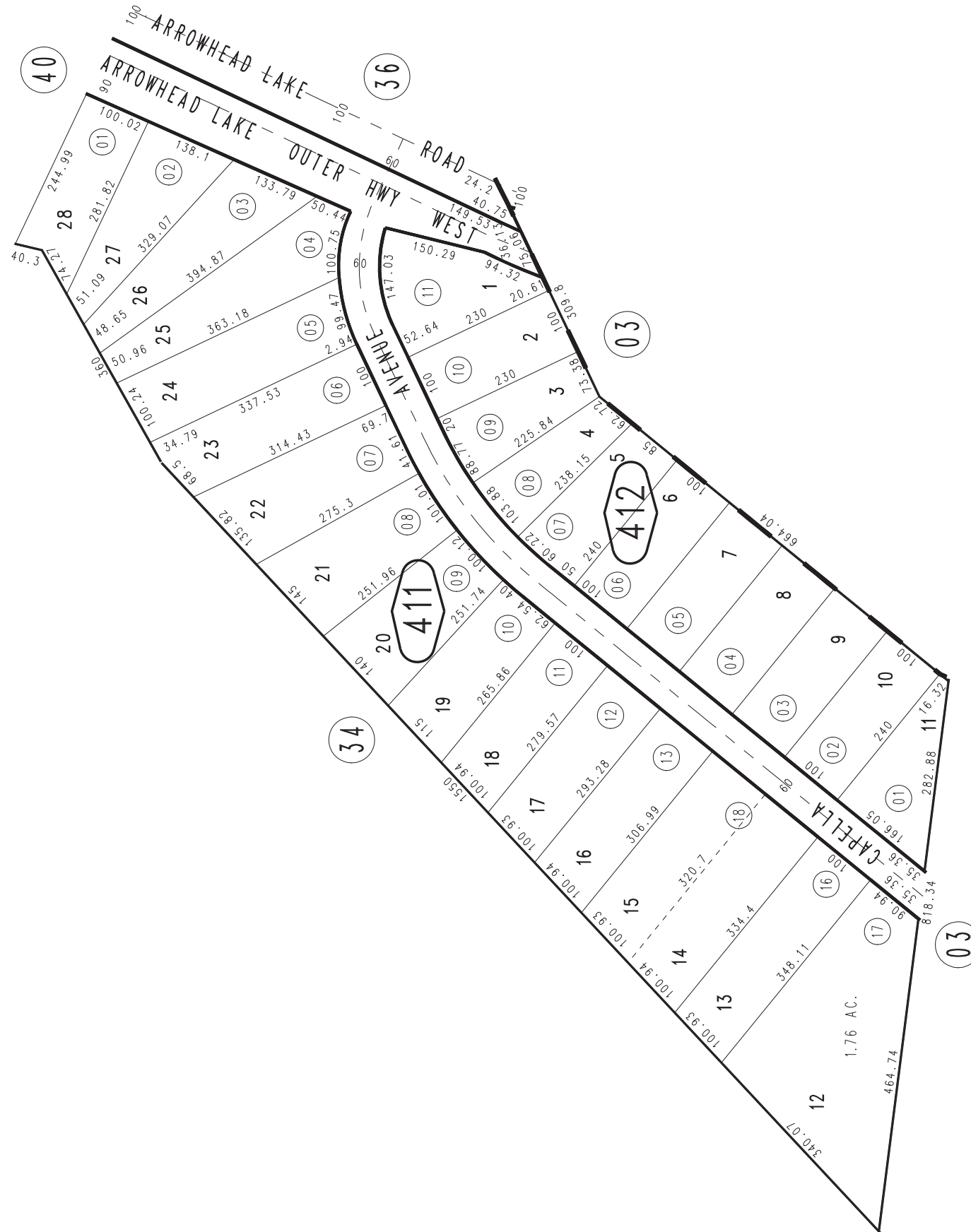
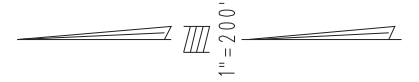
THIS MAP IS FOR THE PURPOSE
OF AD VALOREM TAXATION ONLY.



Ptn. Tract No. 5703, M.B. 72/4-7

City of Hesperia
Tax Rate Area
20033

0398-41



March 2004

Ptn. S.W.1/4, Sec. 36
T.4N., R.4W.

Assessor's Map
Book 0398 Page 41
San Bernardino County

REVISED
01/30/13 RU-MC