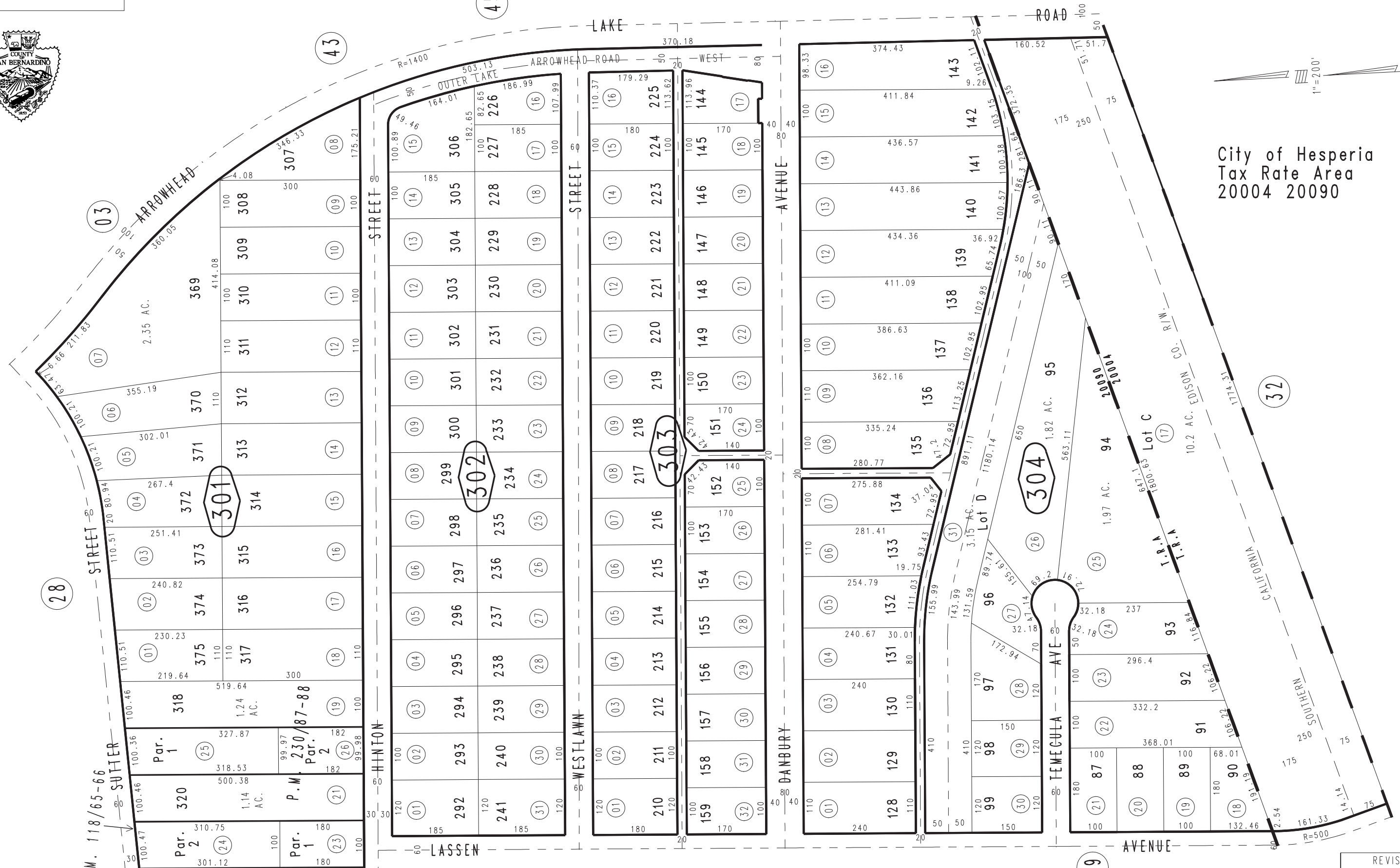


THIS MAP IS FOR THE PURPOSE OF AD VALOREM TAXATION ONLY.

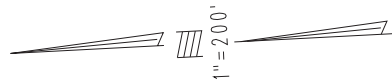


Ptn. Tract No. 5583, M.B. 69/16-30

0398-30



City of Hesperia  
Tax Rate Area  
20004 20090



March 2004

Parcel Map No. 18186, P.M. 230/87-88  
Parcel Map No. 10736, P.M. 118/65-66

Ptn. S.1/2, Sec. 25  
T.4N., R.4W.

Assessor's Map  
Book 0398 Page 30  
San Bernardino County

REVISED  
06/28/11 RU  
01/29/13 RU-MC