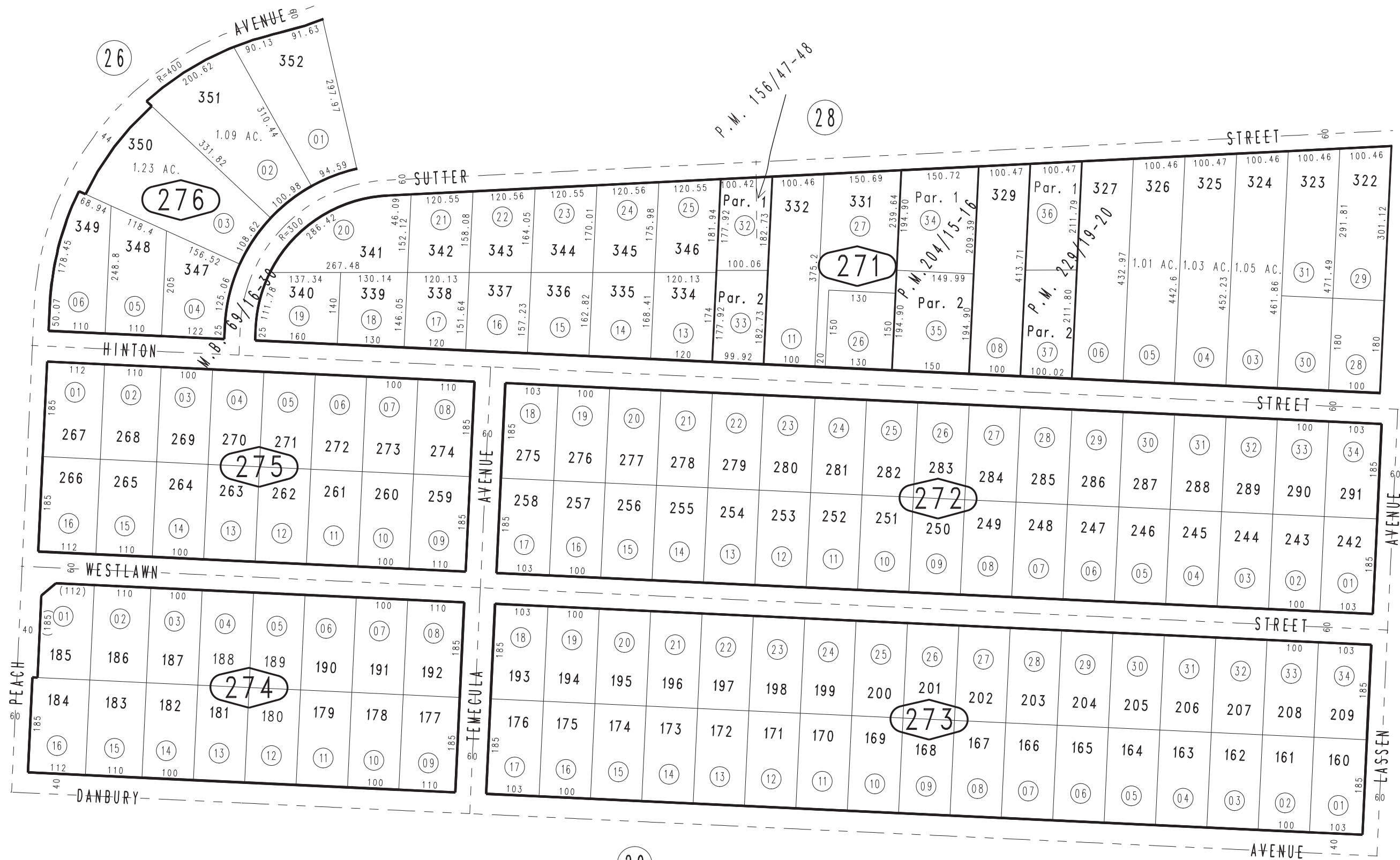
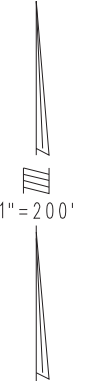


THIS MAP IS FOR THE PURPOSE OF AD VALOREM TAXATION ONLY.

Ptn. Tract No. 5583, M.B. 69/16-30

City of Hesperia
Tax Rate Area
20090

0398-27



March 2004

Parcel Map No. 18220, P.M. 229/19-20
Parcel Map No. 16342, P.M. 204/15-16
Parcel Map No. 12379, P.M. 156/47-48

Ptn. E.1/2, Sec. 26
T.4N., R.4W.

Assessor's Map
Book 0398 Page 27
San Bernardino County

REVISED
01/25/13 RU-MC