

THIS MAP IS FOR THE PURPOSE OF AD VALOREM TAXATION ONLY.

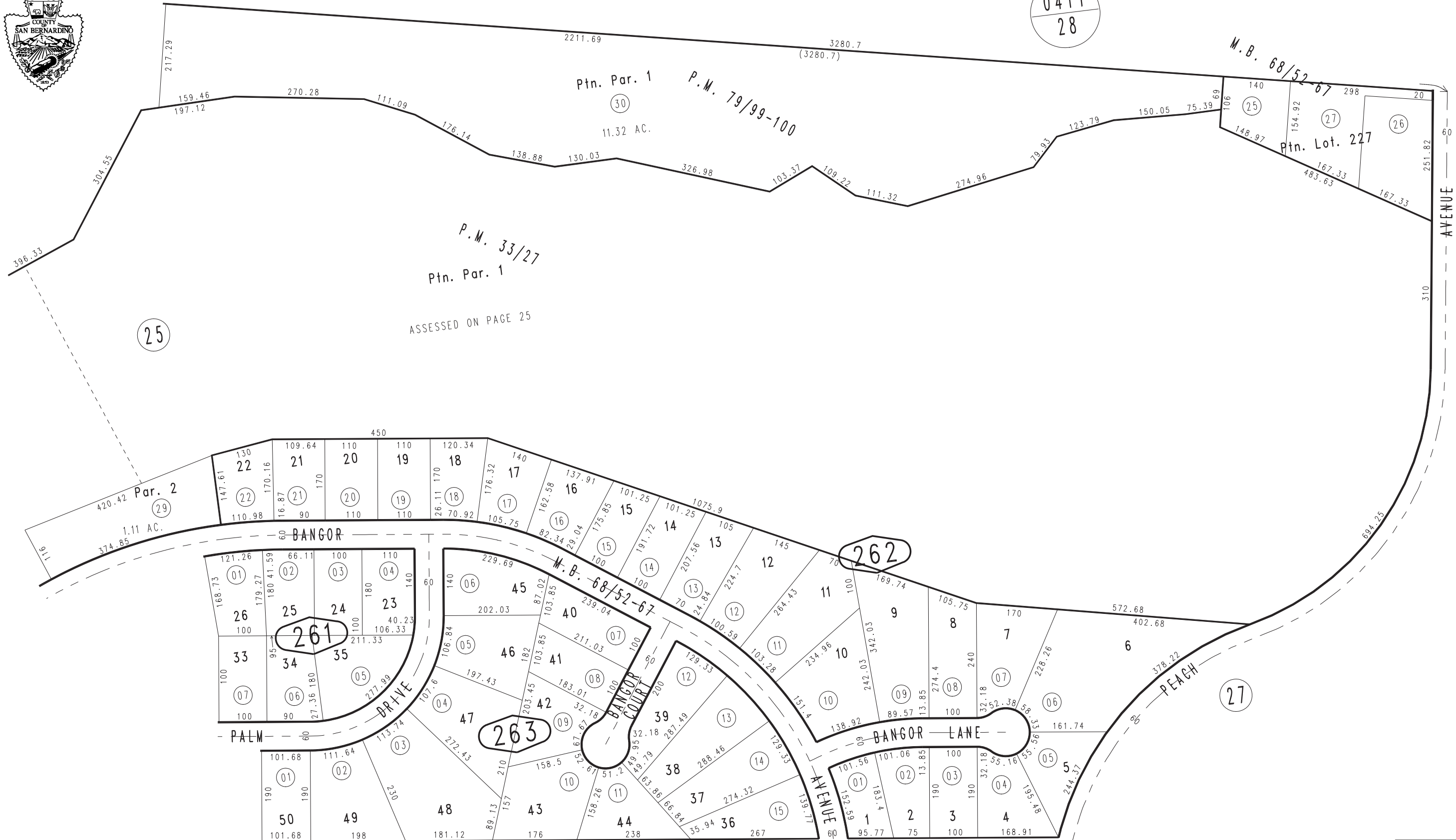
0411
27

Ptn. Tract No. 5249, M.B. 68/52-67

City of Hesperia
Tax Rate Area
20090

0398-26

0411
28



1" = 200'

25

37

28

27

20

March 2004

Ptn. Parcel Map No. 7601, P.M. 79/99-100
Ptn. Parcel Map No. 3585, P.M. 33/27

Ptn. N.E.1/4, Sec. 26
T.4N., R.4W.

Assessor's Map
Book 0398 Page 26
San Bernardino County

REVISED
06/10/10 KC
01/25/13 RU-MC