

THIS MAP IS FOR THE PURPOSE OF AD VALOREM TAXATION ONLY.



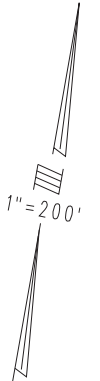
0411
21

Ptn. Tract No. 5249, M.B. 68/52-67

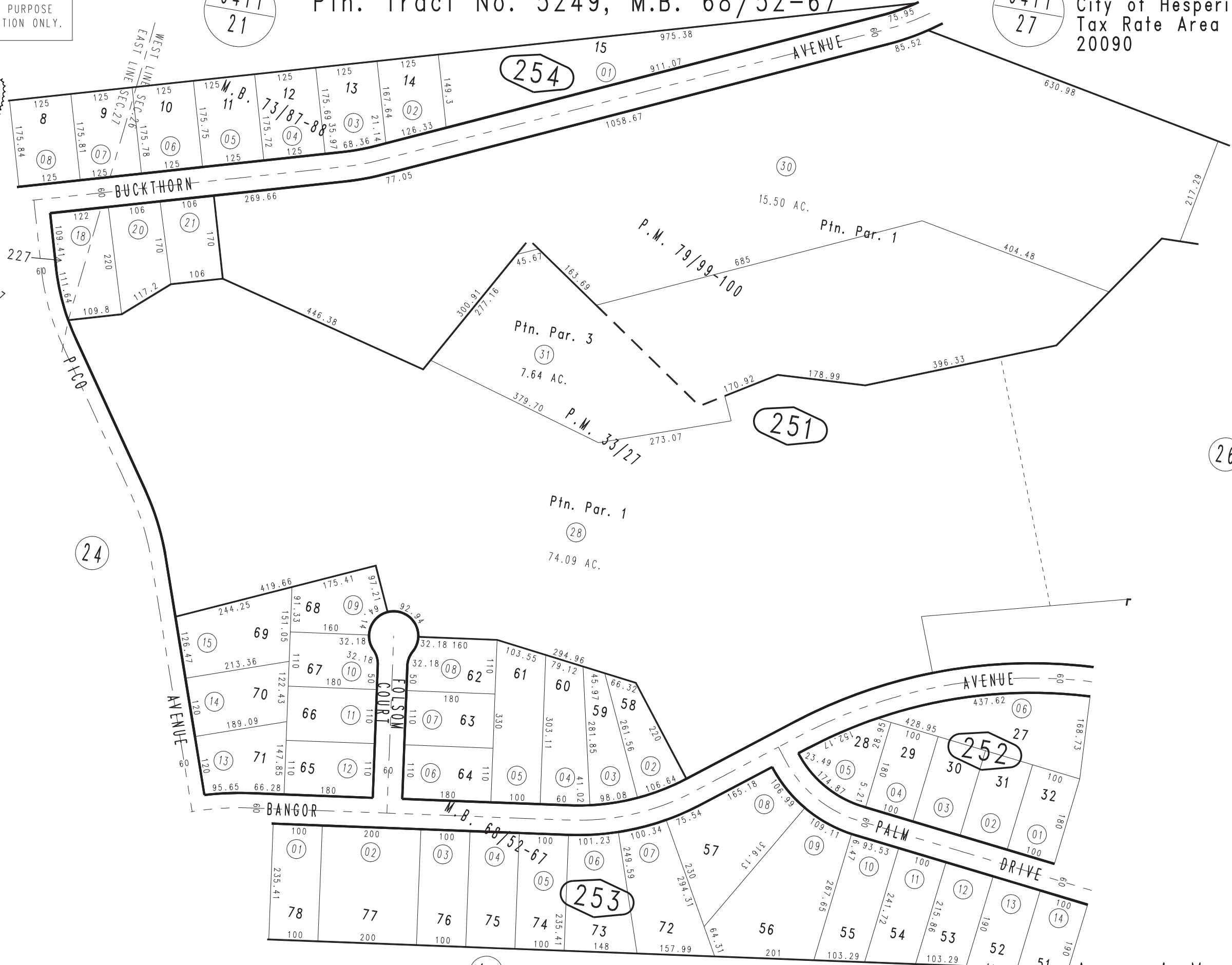
0411
27

City of Hesperia
Tax Rate Area
20090

0398-25



M.B. Ptn. Lot 227
68/52-67



March 2004

Ptn. Parcel Map No. 7601, P.M. 79/99-100
Ptn. Parcel Map 3585, P.M. 33/27

16
Tract No. 5869, M.B. 73/87-88

Ptn. N.W.1/4, Sec. 26
T.4N., R.4W.

Assessor's Map
Book 0398 Page 25
San Bernardino County

REVISED
06/10/10 KC
01/25/13 RU-MC