

THIS MAP IS FOR THE PURPOSE OF AD VALOREM TAXATION ONLY.

Ptn. Tract No. 5581, M.B. 67/63-74

City of Hesperia  
Tax Rate Area  
20033

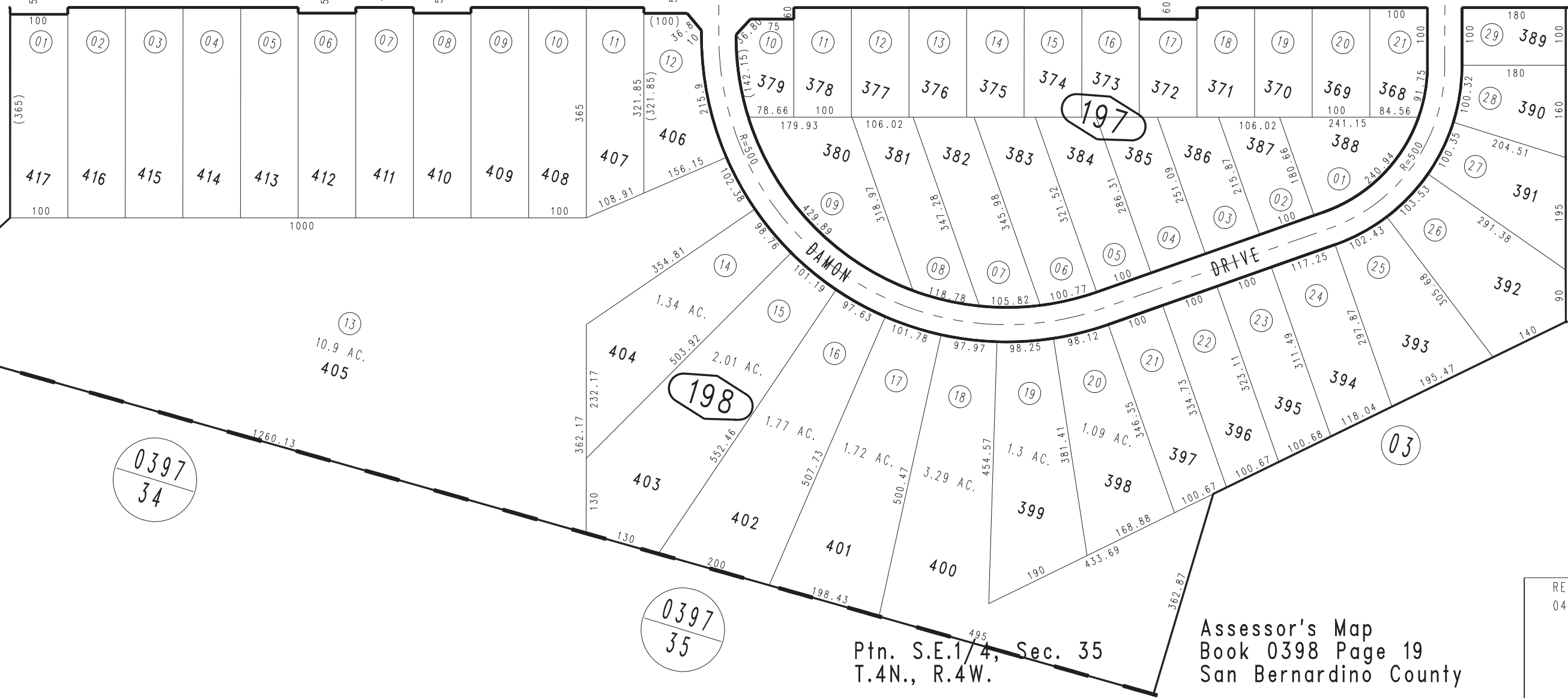
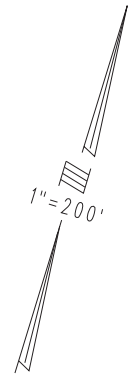
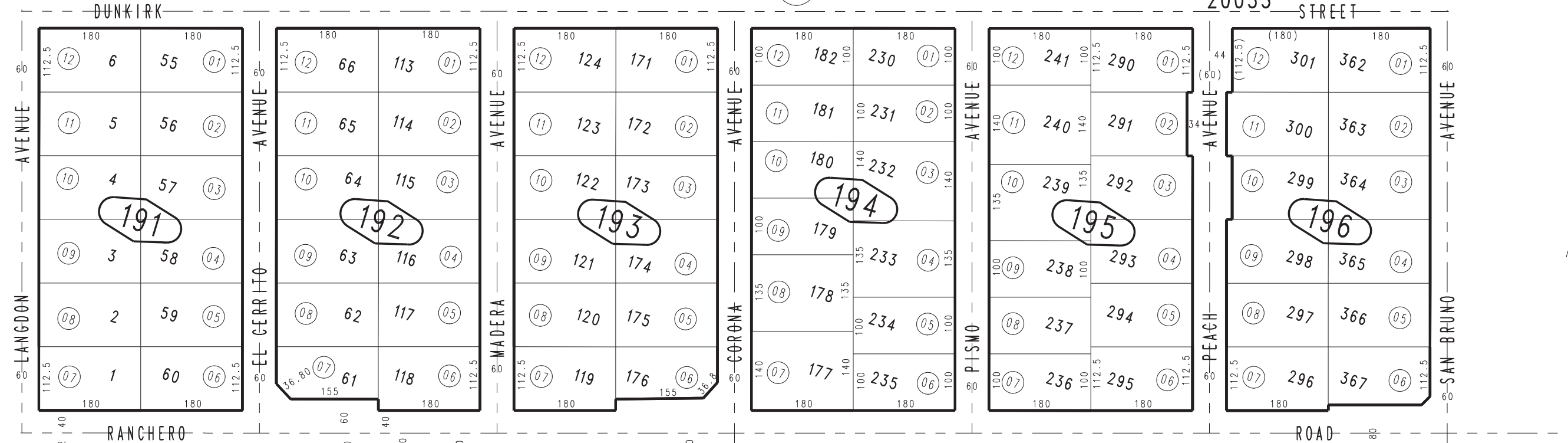
0398-19



11

18

34



0397  
34

0397  
35

Ptn. S.E.1/4, Sec. 35  
T.4N., R.4W.

Assessor's Map  
Book 0398 Page 19  
San Bernardino County

REVISED  
04/10/08 GL