

THIS MAP IS FOR THE PURPOSE OF AD VALOREM TAXATION ONLY.

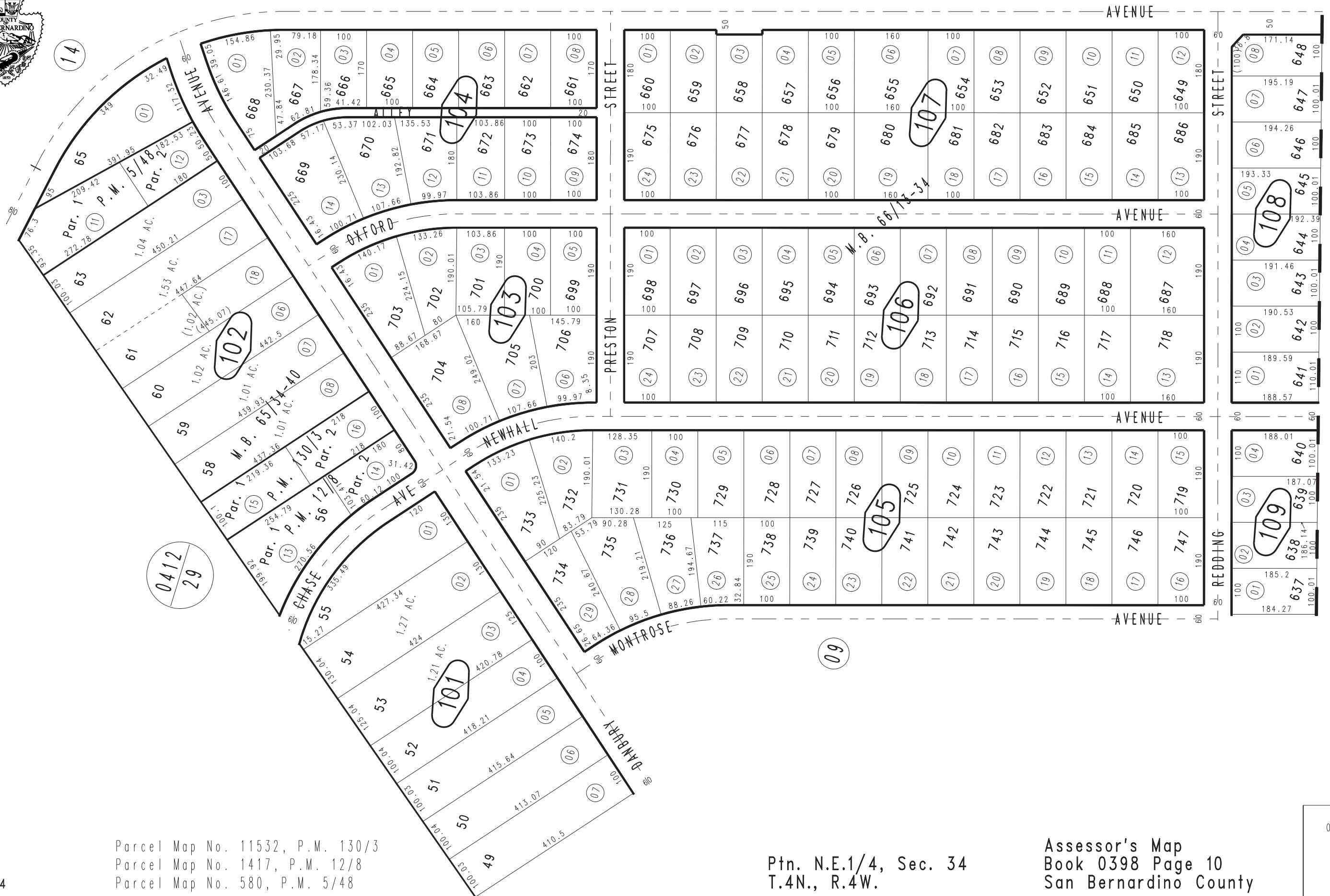


Ptn. Tract No. 5543, M.B. 66/13-34
Ptn. Tract No. 5423, M.B. 65/34-40

City of Hesperia
Tax Rate Area
20090

0398-10

1"=200'



Parcel Map No. 11532, P.M. 130/3
Parcel Map No. 1417, P.M. 12/8
Parcel Map No. 580, P.M. 5/48

March 2004

Ptn. N.E.1/4, Sec. 34
T.4N., R.4W.

Assessor's Map
Book 0398 Page 10
San Bernardino County

REVISED
01/25/13 RU-MC