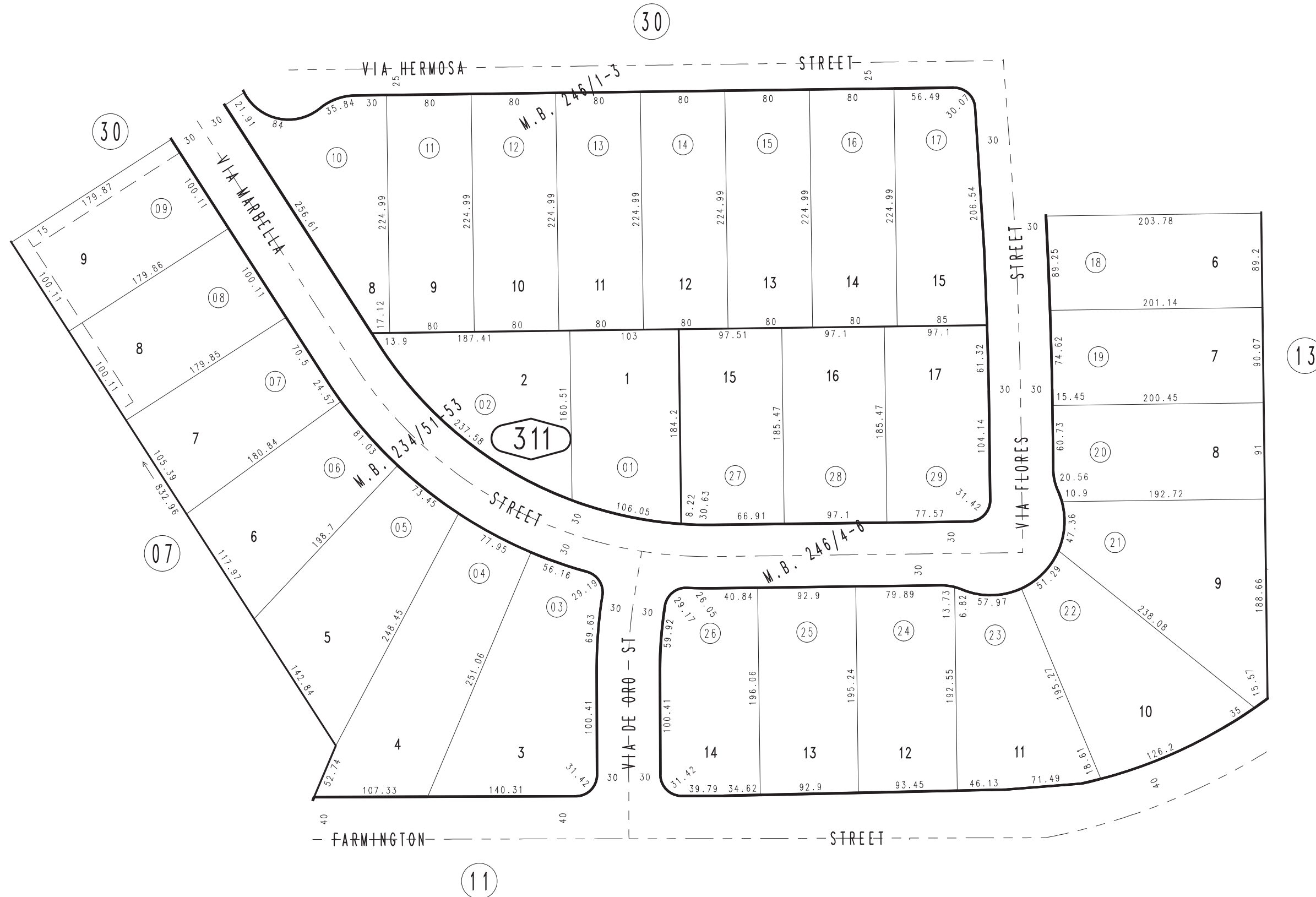


THIS MAP IS FOR THE PURPOSE  
OF AD VALOREM TAXATION ONLY.

Ptn. Tract No. 13183-5, M.B. 234/51-53

City of Hesperia  
Tax Rate Area  
20010

0397-31



March 2004

Ptn. Tract No. 13183-8, M.B. 246/4-6  
Ptn. Tract No. 13183-7, M.B. 246/1-3

Ptn. N.W.1/4, Sec. 05  
T.3N., R.4W.

Assessor's Map  
Book 0397 Page 31  
San Bernardino County

REVISED