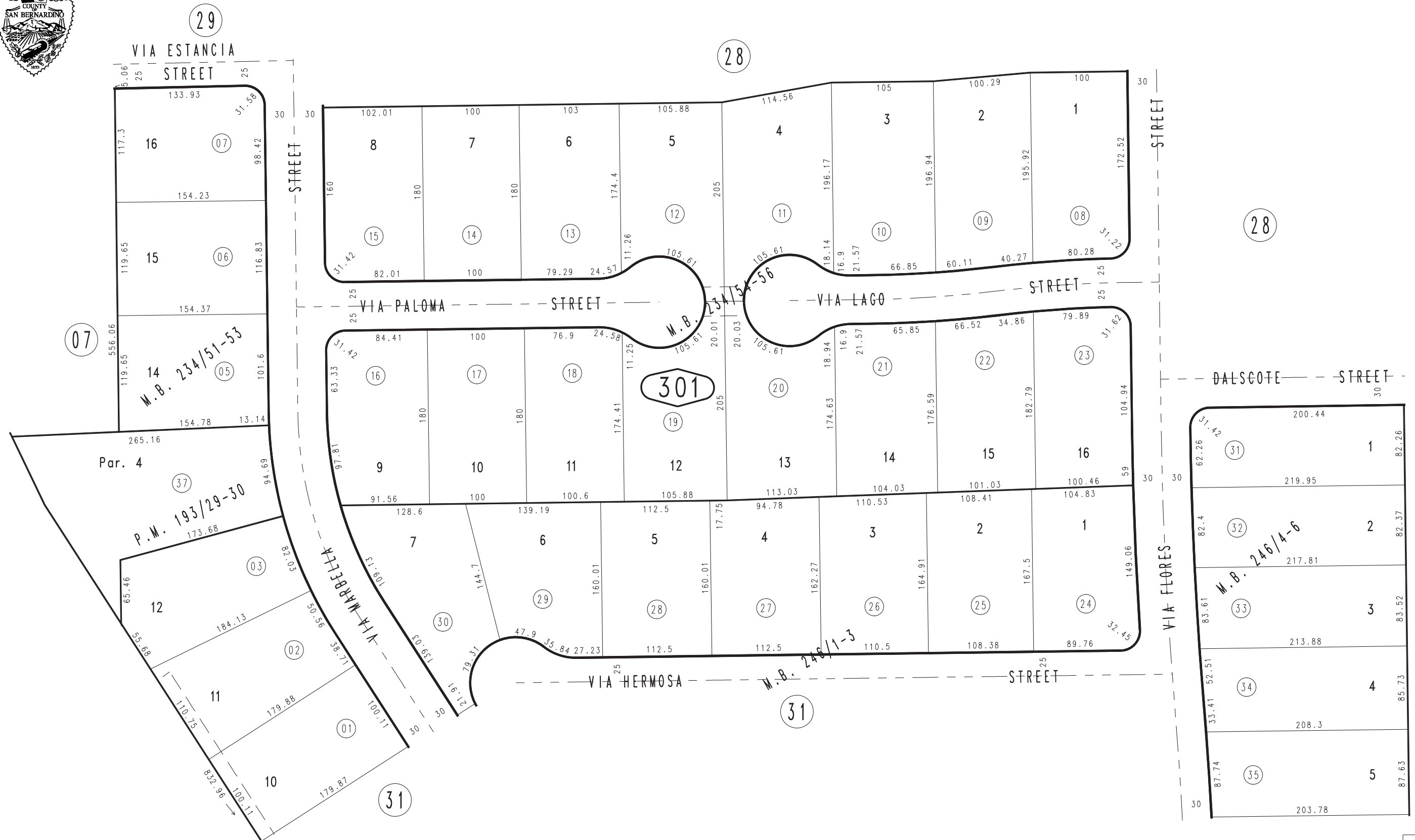


THIS MAP IS FOR THE PURPOSE  
OF AD VALOREM TAXATION ONLY.

# Ptn. Tract No. 13183-5, M.B. 234/51-53

City of Hesperia  
Tax Rate Area  
20010

0397-30



Ptn. Parcel Map No. 15539, P.M. 193/29-30  
 Ptn. Tract No. 13183-8, M.B. 246/4-6  
 Ptn. Tract No. 13183-7, M.B. 246/1-3  
 Tract No. 13183-6, M.B. 234/54-56

March 2004

Ptn. N.W.1/4, Sec. 05  
 T.3N., R.4W.

Assessor's Map  
 Book 0397 Page 30  
 San Bernardino County

REVISED