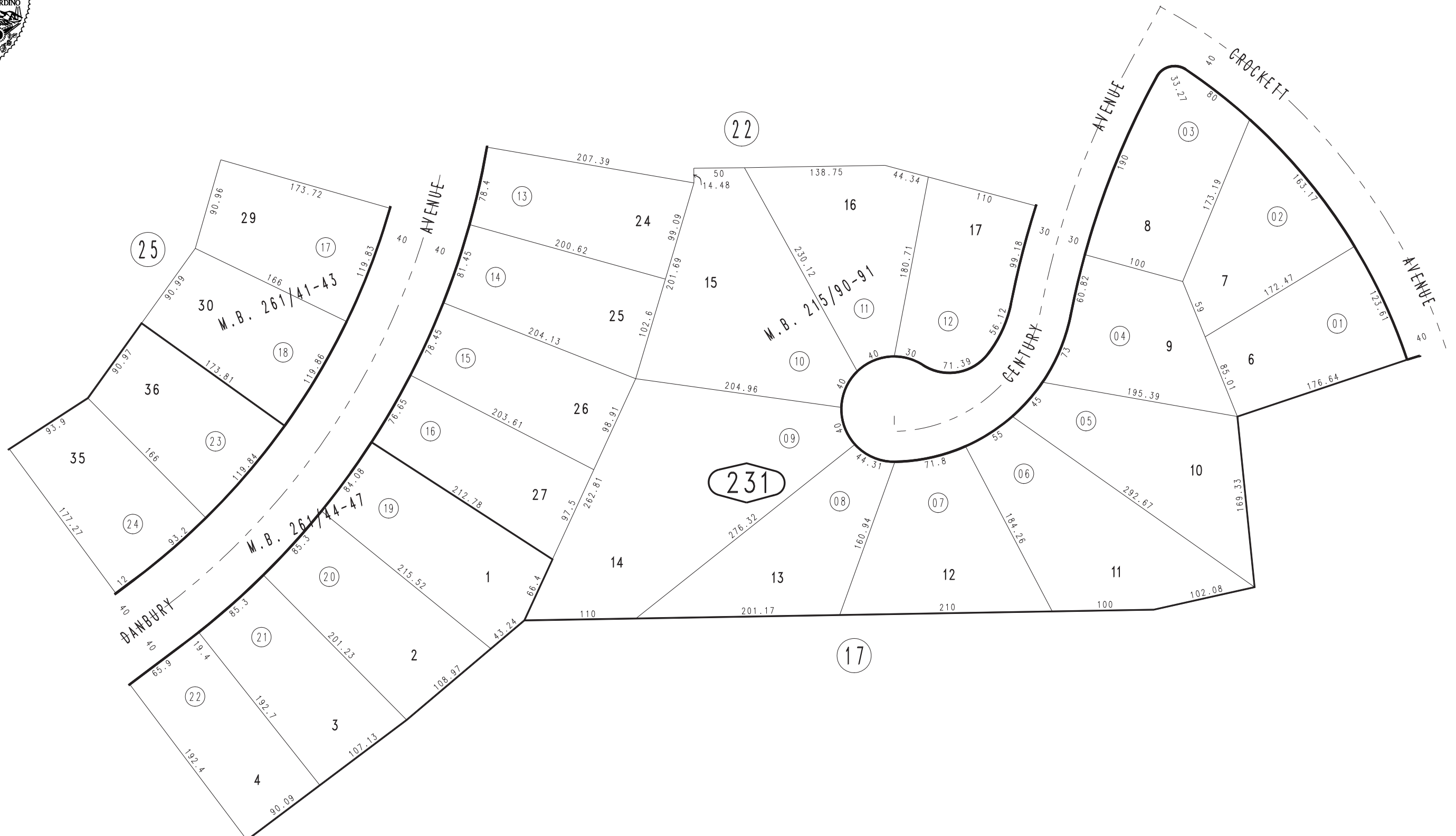


THIS MAP IS FOR THE PURPOSE
OF AD VALOREM TAXATION ONLY.

Ptn. Tract No. 6065-1, M.B. 215/90-91

City of Hesperia
Tax Rate Area
20010

0397-23



March 2004

Ptn. Tract No. 6065-3, M.B. 241/43-45, Amended 261/44-47
Ptn. Tract No. 6065-2, M.B. 222/63-65, Amended 261/41-43

Ptn. N.E.1/4, Sec. 04
T.3N., R.4W.

Assessor's Map
Book 0397 Page 23
San Bernardino County

REVISED