

THIS MAP IS FOR THE PURPOSE
OF AD VALOREM TAXATION ONLY.

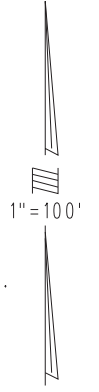
Ptn. Tract No. 13183-1, M.B. 213/27-29

City of Hesperia
Tax Rate Area
20010 20018 20023

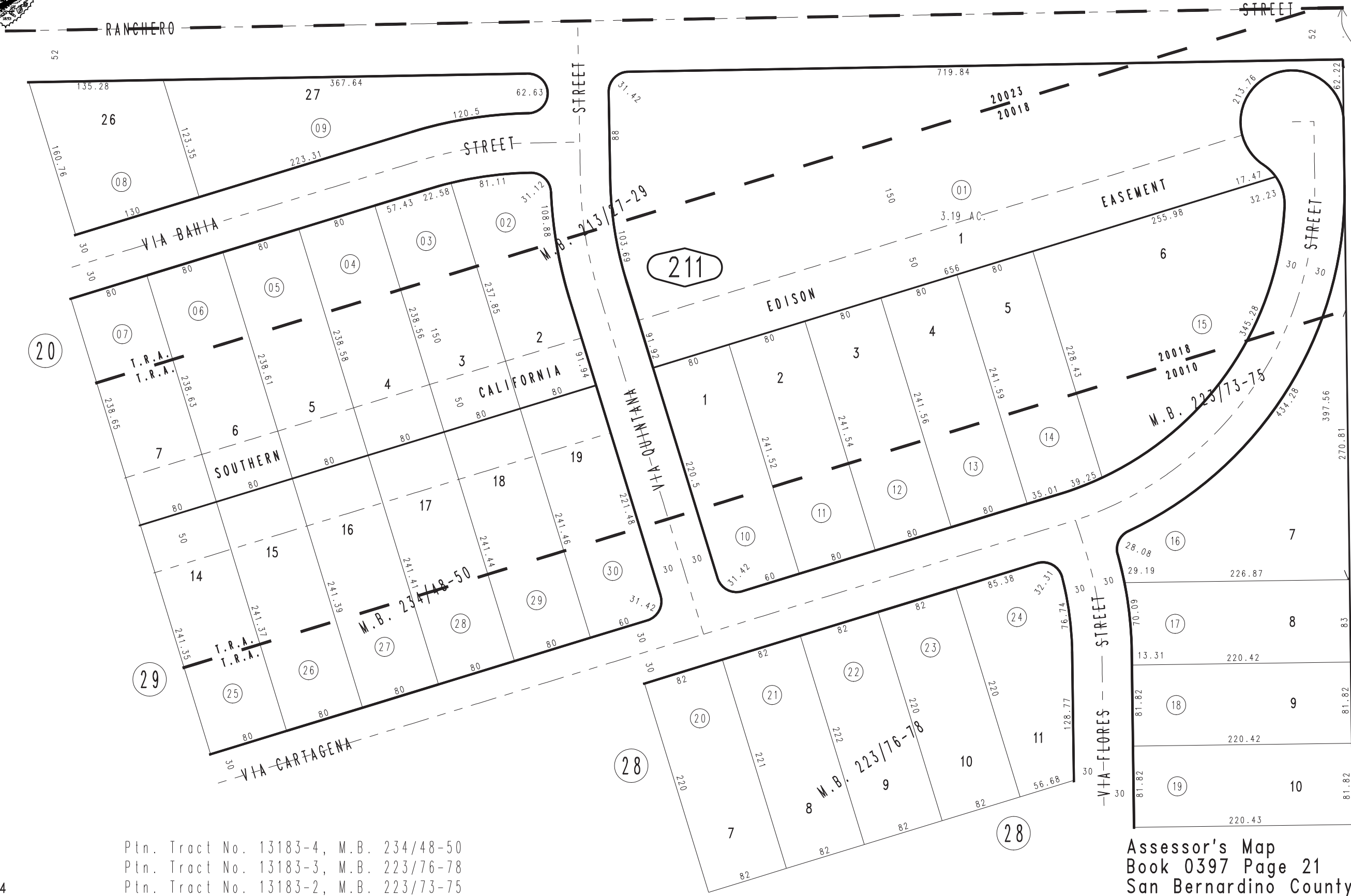
0397-21



0412
18



N.1/4 COR.
SEC.5, T.3N.,R.4W.



Ptn. Tract No. 13183-4, M.B. 234/48-50
Ptn. Tract No. 13183-3, M.B. 223/76-78
Ptn. Tract No. 13183-2, M.B. 223/73-75

March 2004

Assessor's Map
Book 0397 Page 21
San Bernardino County

REVISED