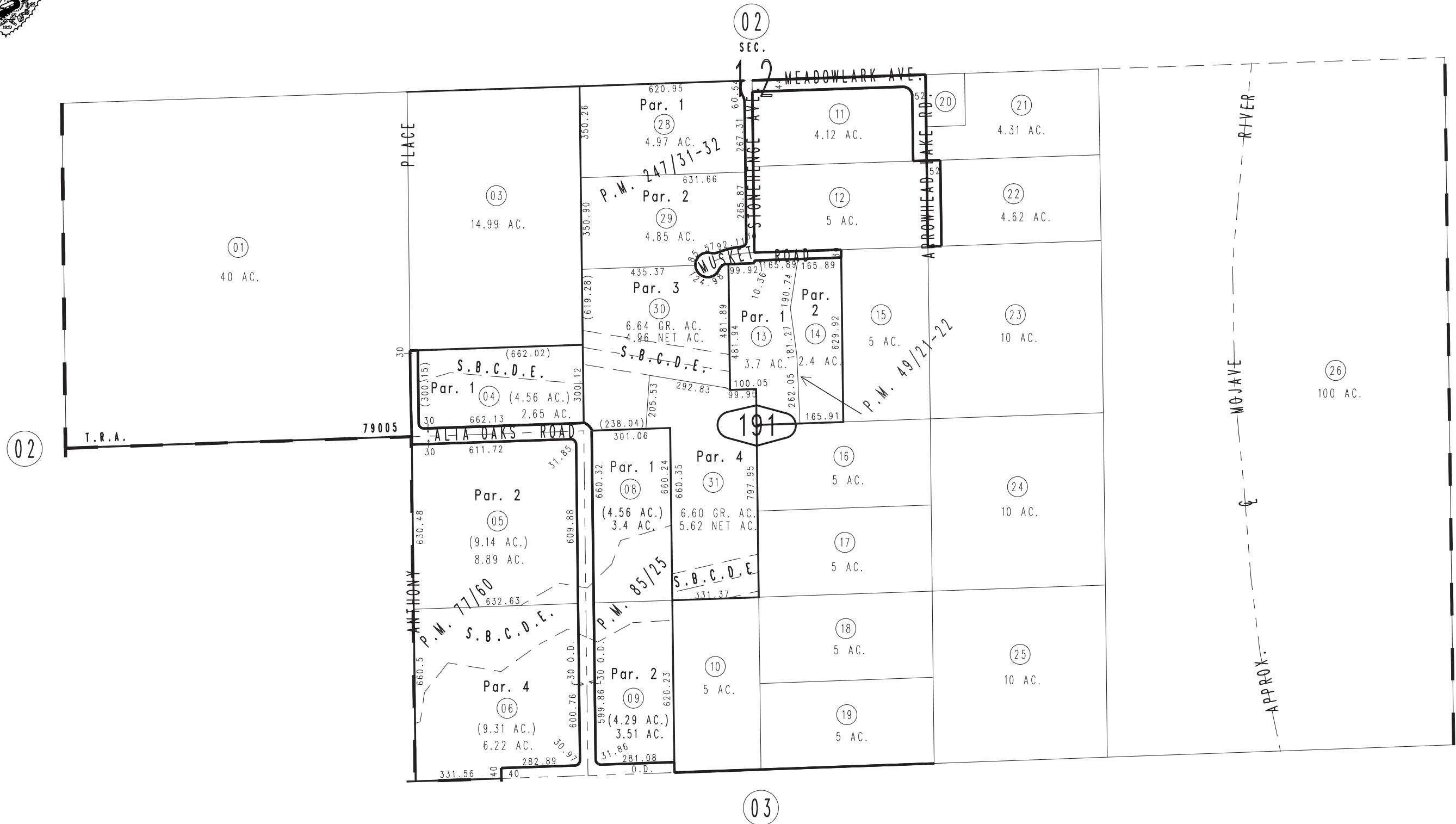


THIS MAP IS FOR THE PURPOSE
OF AD VALOREM TAXATION ONLY.

S.1/2, Sec.12, T.3N.,R.4W., S.B.B.&M.

City of Hesperia
Hesperia Unified
Tax Rate Area
79005

0397-19



0433
12

Parcel Map No. 19015, 247/31-32
Parcel Map No. 8153, P.M. 85/25
Ptn. Parcel Map No. 7464, P.M. 77/60
Parcel Map No. 5123, P.M. 49/21-22

March 2004

Assessor's Map
Book 0397 Page 19
San Bernardino County

REVISED
05/11/16 GW
02/13/17 GW
06/08/20 RU