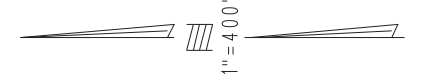


THIS MAP IS FOR THE PURPOSE OF AD VALOREM TAXATION ONLY.

W.1/2, Fractional Sec.3, T.3N.,R.4W., S.B.B.&M.

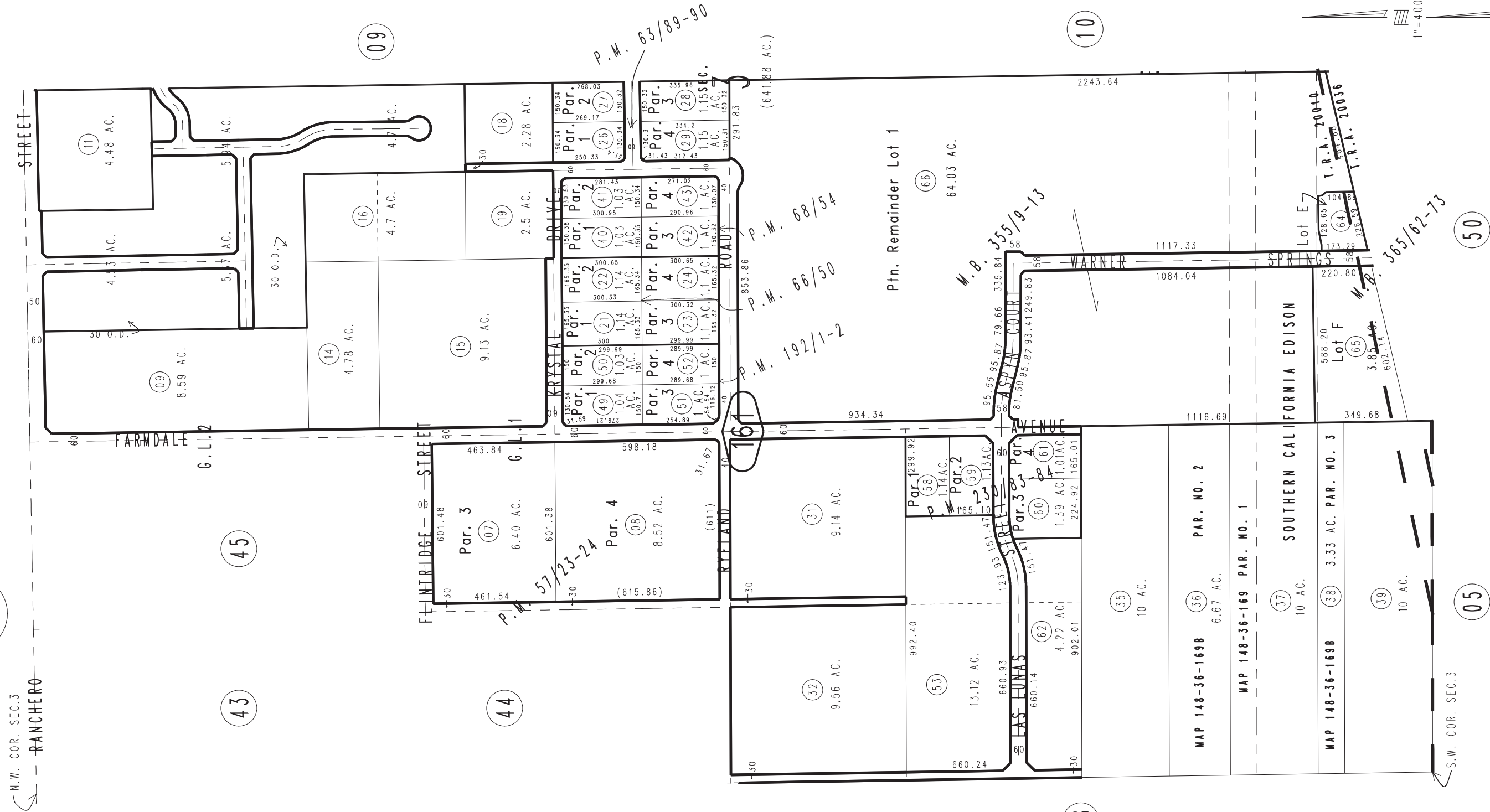
City of Hesperia
Tax Rate Area
20010 20036

0397-16



0398
05

0398
04



Ptn. Tract No. 18989-1, M.B. 365/62-73
 Ptn. Tract No. 18985-1, M.B. 355/9-13
 Parcel Map No. 18136, P.M. 230/83-84
 Parcel Map No. 15449, P.M. 192/1-2
 Parcel Map No. 7032, P.M. 68/54
 Parcel Map No. 6873, P.M. 66/50
 Parcel Map No. 6580, P.M. 63/89-90
 Ptn. Parcel Map No. 5781, P.M. 57/23-24

March 2004

Assessor's Map
 Book 0397 Page 16
 San Bernardino County

REVISED
 01/25/22 KC
 11/02/23 KC
 12/29/23 KA