

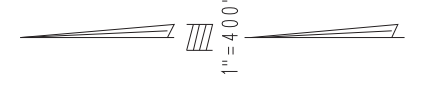
THIS MAP IS FOR THE PURPOSE  
OF AD VALOREM TAXATION ONLY.



W.1/2 Sec.9, T.3N.,R.4W., S.B.B.&M.

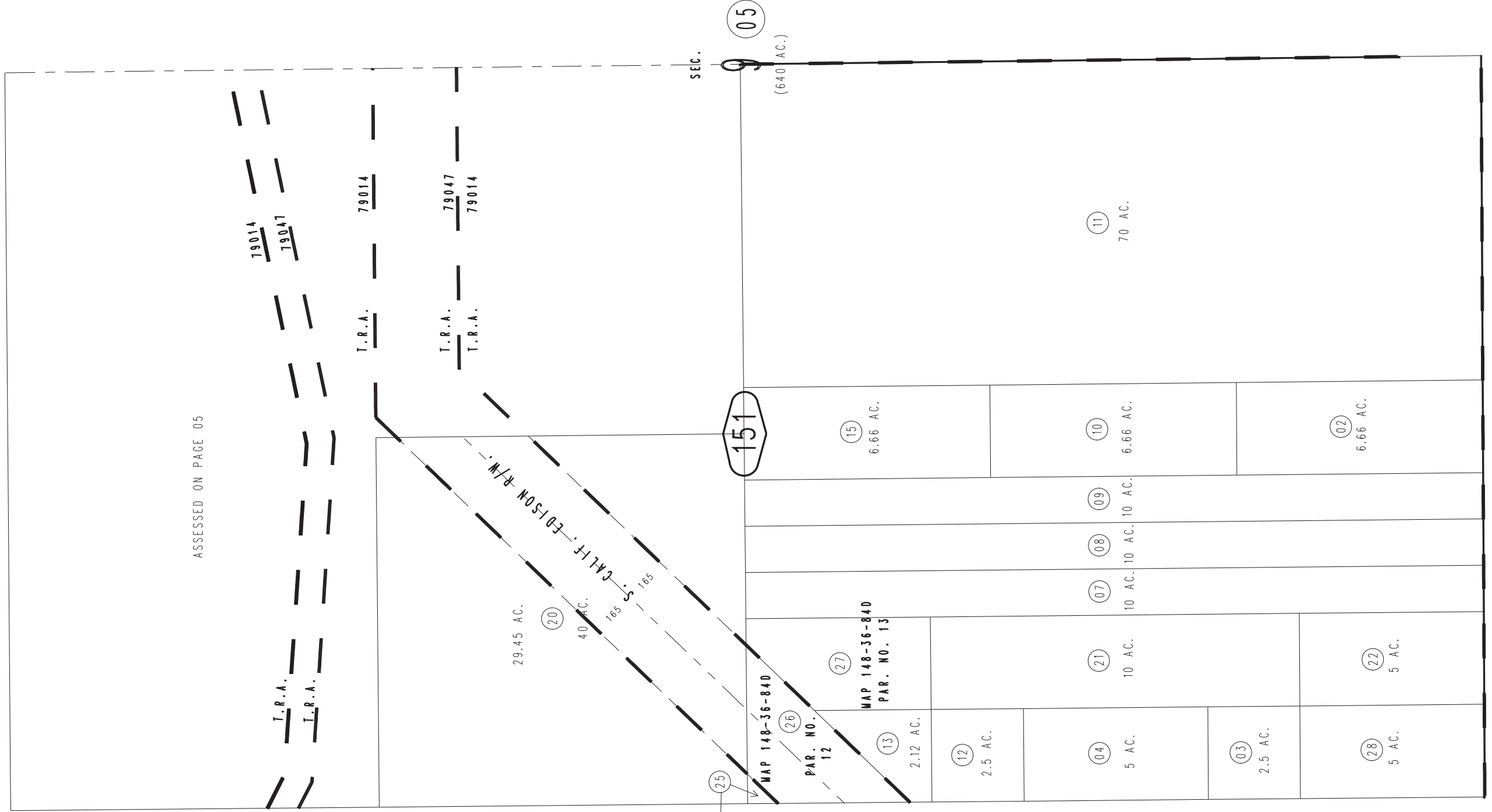
Hesperia Unified  
Tax Rate Area  
79014 79047

0397-15



18

ASSESSED ON PAGE 05



07

MAP 148-36-84D  
PAR. NO. 11

25

MAP 148-36-84D  
PAR. NO. 12

26

27

MAP 148-36-84D  
PAR. NO. 13

12

13

2.12 AC.

12

2.5 AC.

04

5 AC.

04

10 AC.

21

10 AC.

07

10 AC.

08

10 AC.

09

10 AC.

10

6.66 AC.

11

70 AC.

02

6.66 AC.

15

6.66 AC.

151

05

(640 AC.)

SEC.

04

08