

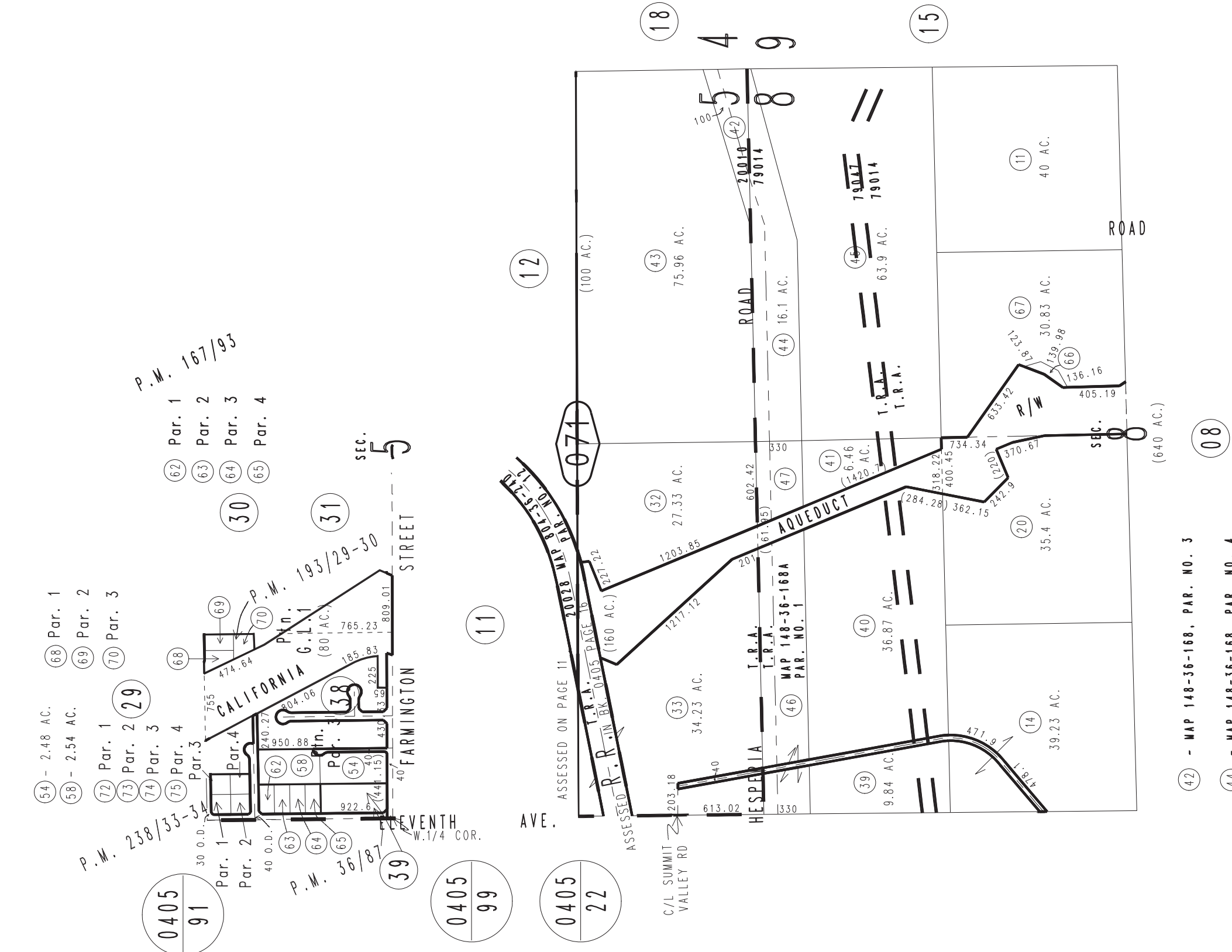
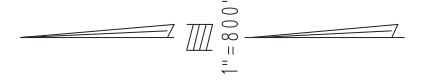
THIS MAP IS FOR THE PURPOSE OF AD VALOREM TAXATION ONLY.



Fractional Sec.5 & N.1/2 Sec.8, T.3N.,R.4W., S.B.B.&M.

Hesperia Unified
City of Hesperia
Tax Rate Area
20010 20018 20023
20028 79014 79047

0397-07



P.M. 167/93
Par. 1
Par. 2
Par. 3
Par. 4

P.M. 193/29-30
Par. 1
Par. 2
Par. 3
Par. 4

P.M. 238/33-34
Par. 1
Par. 2
Par. 3
Par. 4

0405
91

0405
99

0405
22

- 42 - MAP 148-36-168, PAR. NO. 3
- 44 - MAP 148-36-168, PAR. NO. 4
- 46 - MAP 148-36-168, PAR. NO. 2
- 47 - MAP 148-36-168, PAR. NO. 1

Parcel Map No. 17897, P.M. 238/33-34
Ptn. Parcel Map No. 15539, P.M. 193/29-30
Parcel Map No. 12644, P.M. 167/93
Ptn. Parcel Map No. 3964, P.M. 36/87

March 2004

Assessor's Map
Book 0397 Page 07
San Bernardino County

REVISED
09/14/09 RM
04/27/11 GW