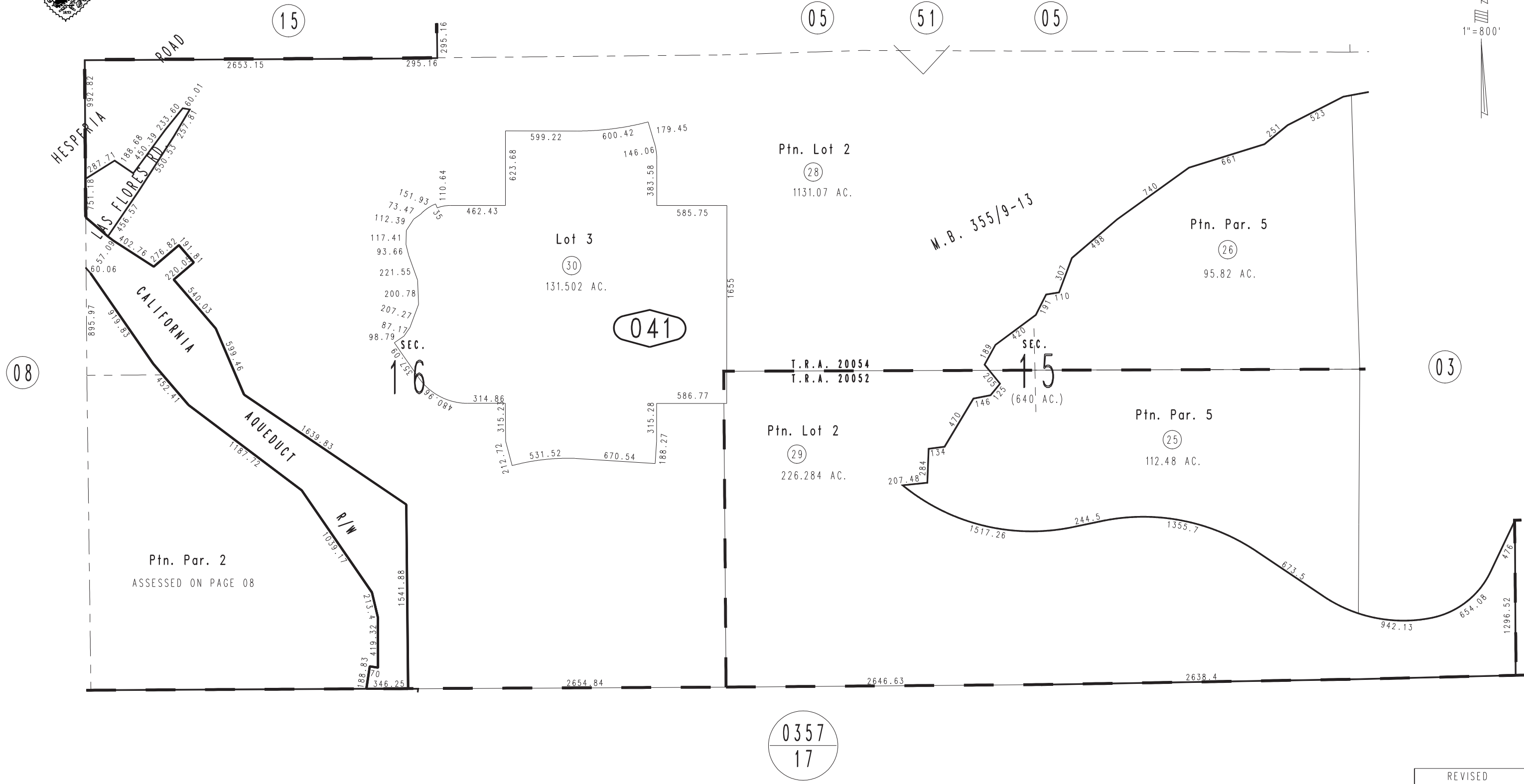
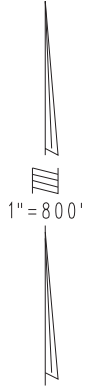


THIS MAP IS FOR THE PURPOSE
OF AD VALOREM TAXATION ONLY.

Sec.15&16, T.3N.,R.4W., S.B.B.&M.

City of Hesperia
Tax Rate Area
20052 20054

0397-04



March 2004

Ptn. Tract No. 18985-1, M.B. 355/9-13
Ptn. Parcel Map No. 13471, P.M. 172/86-101

Assessor's Map
Book 0397 Page 04
San Bernardino County

REVISED
06/08/20 RU
03/30/21 GW
11/02/23 KC