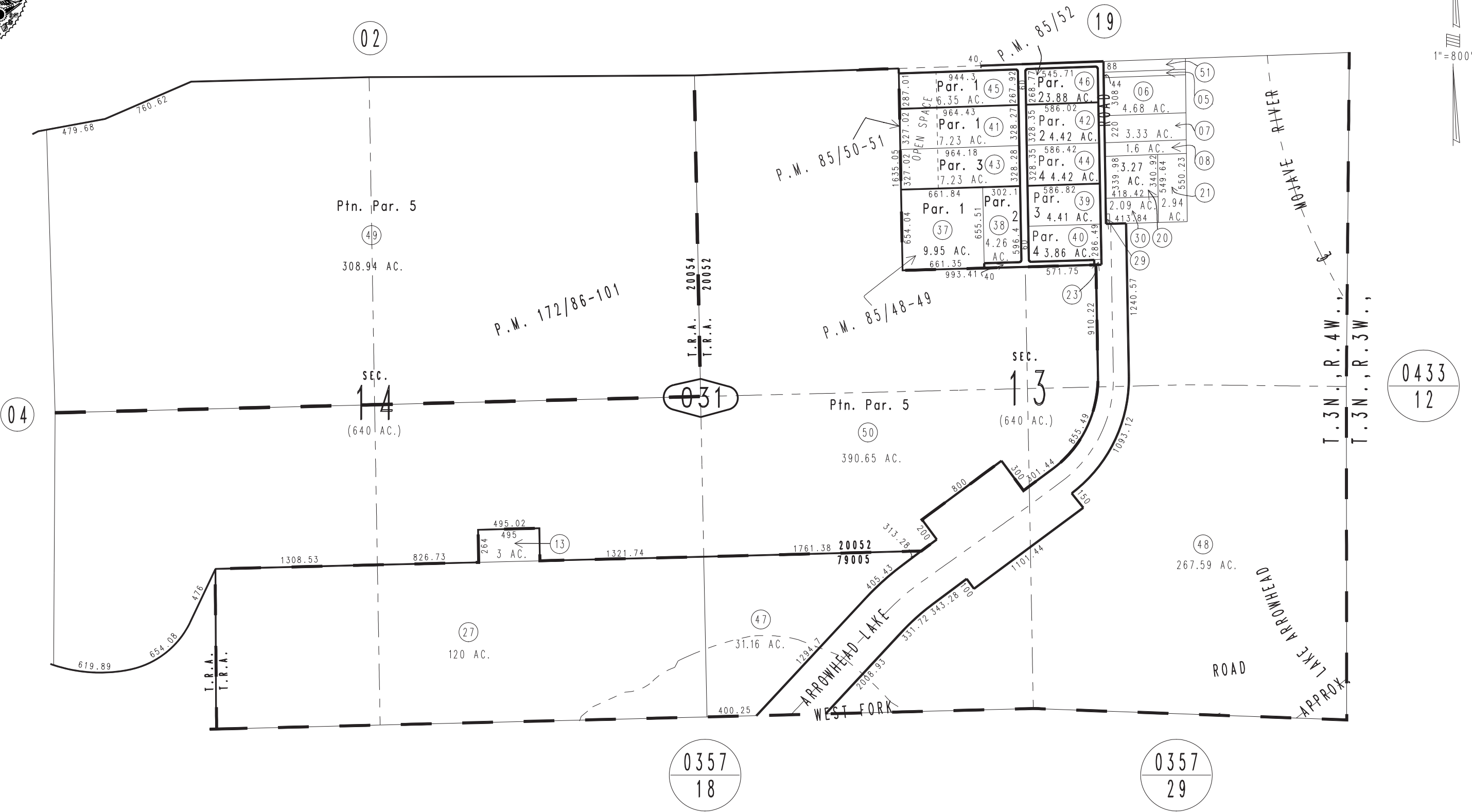


THIS MAP IS FOR THE PURPOSE OF AD VALOREM TAXATION ONLY.

Sec.13&14, T.3N.,R.4W., S.B.B.&M.

City of Hesperia  
Hesperia Unified  
Tax Rate Area  
20052 20054  
79005

0397-03



March 2004

Ptn. Parcel Map No. 13471, P.M. 172/86-101  
Parcel Map No. 8152, P.M. 85/52  
Parcel Map No. 8151, P.M. 85/50-51  
Parcel Map No. 8150, P.M. 85/48-49

Assessor's Map  
Book 0397 Page 03  
San Bernardino County

REVISED  
06/08/20 RU