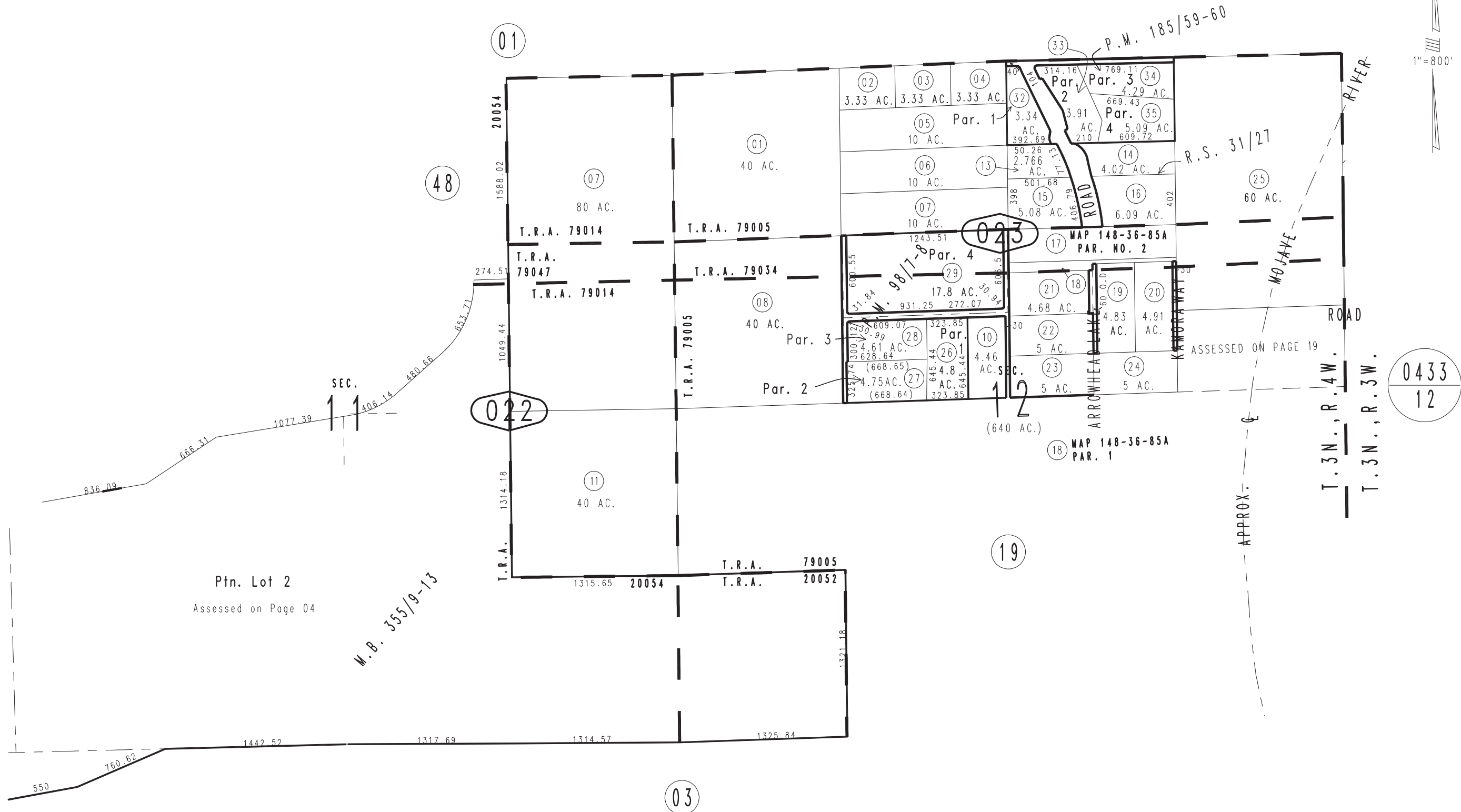


THIS MAP IS FOR THE PURPOSE OF AD VALOREM TAXATION ONLY.

Sec.11&12, T.3N.,R.4W., S.B.B.&M.

City of Hesperia
Hesperia Unified
Tax Rate Area
20052 20054 79005
79014 79034 79047

0397-02



Ptn. Lot 2
Assessed on Page 04

M.B. 355/9-13

ASSESSED ON PAGE 19

0433
12

March 2004

Ptn. Tract No. 18985-1, M.B. 355/9-13
Parcel Map No. 15088, P.M. 185/59-60
Parcel Map No. 8790, P.M. 98/7-8

Assessor's Map
Book 0397 Page 02
San Bernardino County

REVISED
10/20/20 KA
11/02/23 KC