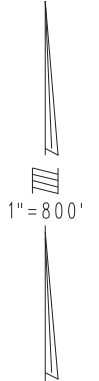
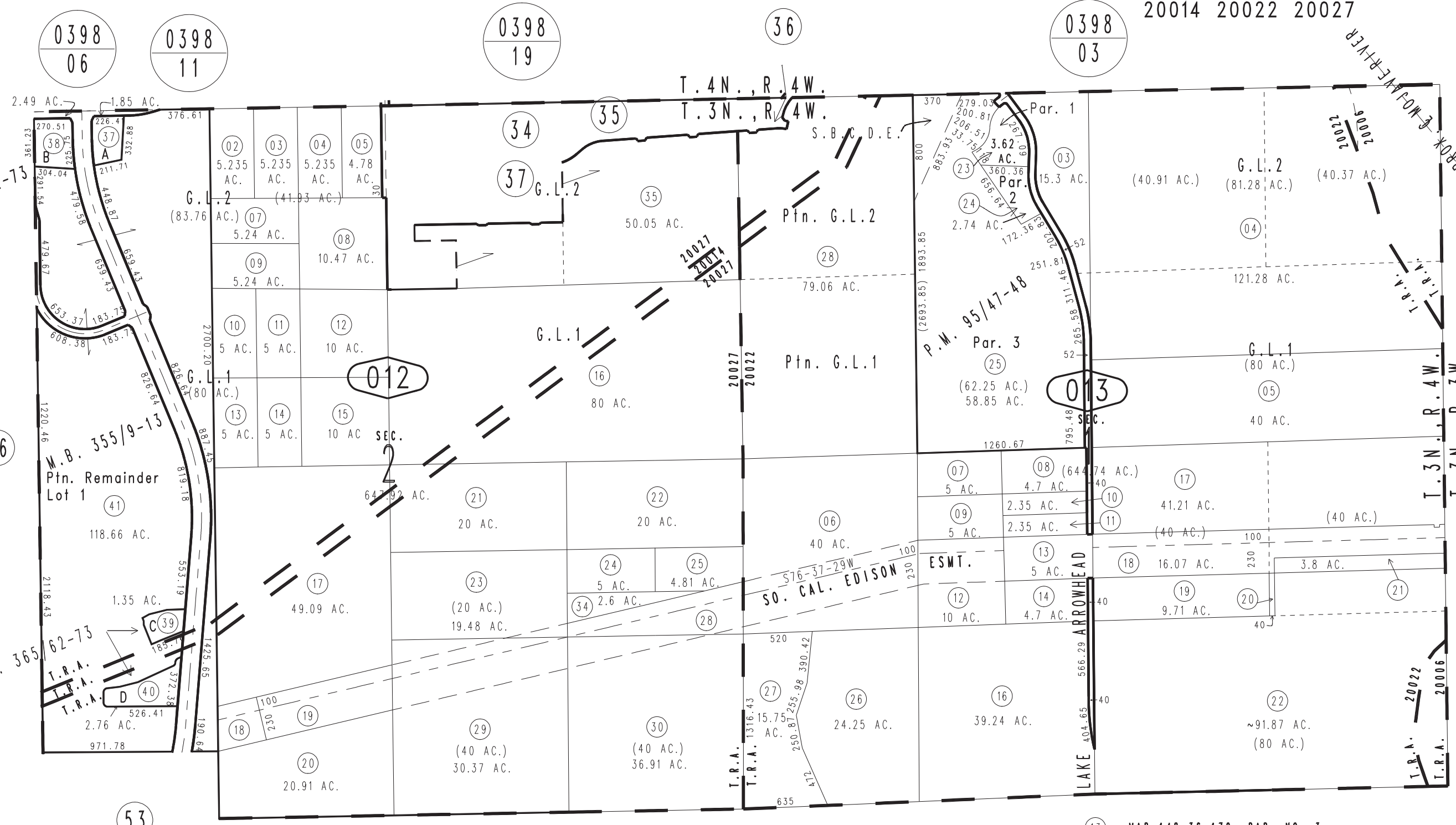


THIS MAP IS FOR THE PURPOSE OF AD VALOREM TAXATION ONLY.

Fractional Sec.1&2, T.3N.,R.4W., S.B.B.&M.

City of Hesperia
Tax Rate Area
20006 20011
20014 20022 20027

0397-01



M.B. 365/62-73

M.B. 355/9-15
Ptn. Remainder Lot 1

M.B. 365/62-73
T.R.A.
T.R.A.
T.R.A.

SO. CAL. EDISON
ESMT.

13 - MAP 148-36-170, PAR. NO. 3

March 2004

Ptn. Tract No. 18989-1, M.B. 365/62-73
Ptn. Tract No. 18985-1, M.B. 355/9-13
Parcel Map No. 8762, P.M. 95/47-48

- 18 - MAP 148-36-169, PAR. NO. 5
- 19 - MAP 148-36-170, PAR. NO. 1
- 28 - MAP 148-36-170, PAR. NO. 2
- 34 - MAP 148-36-170C, PAR. NO. 1

Assessor's Map
Book 0397 Page 01
San Bernardino County

REVISED
10/27/23 KC
04/23/24 RU