

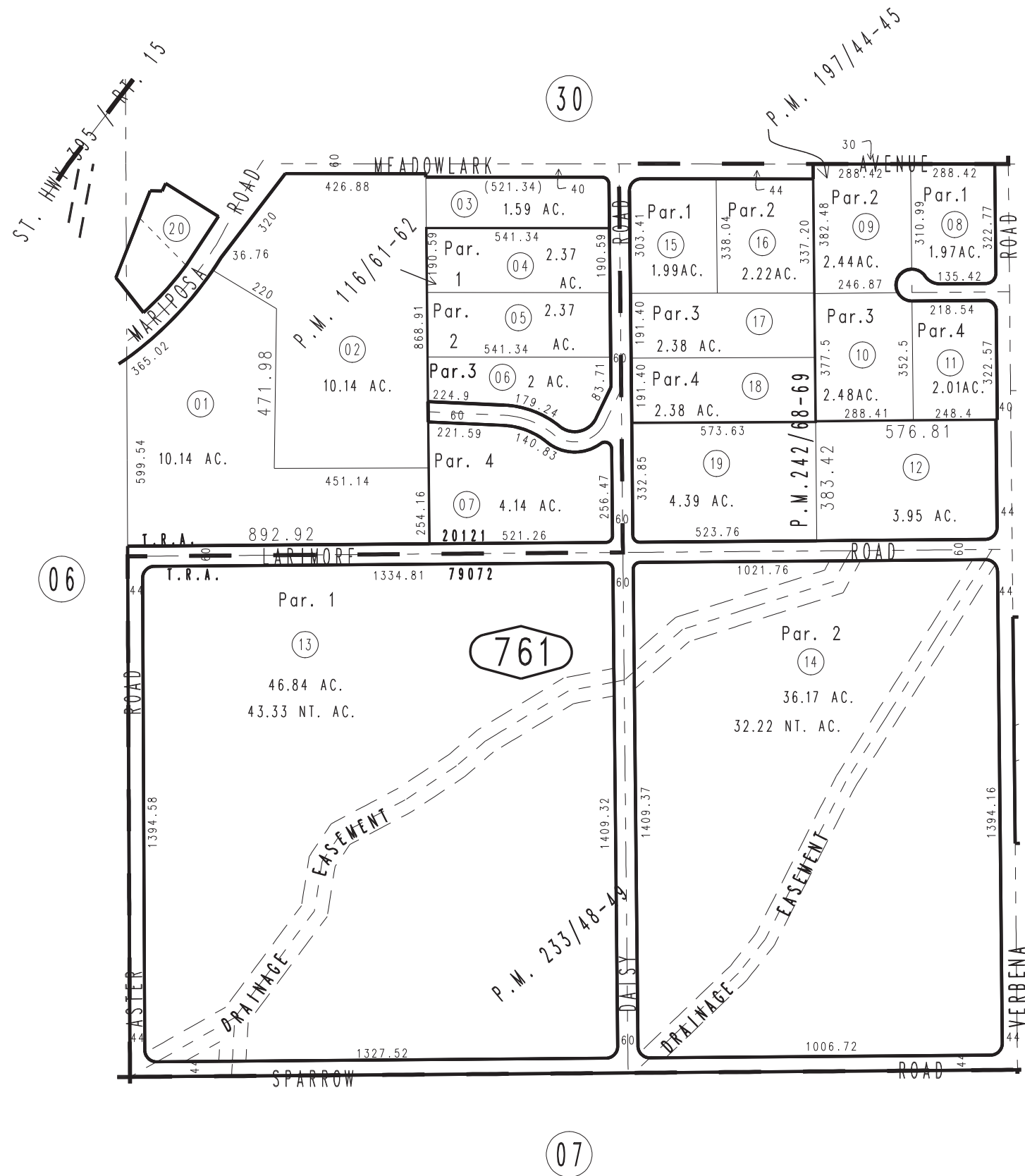
THIS MAP IS FOR THE PURPOSE OF AD VALOREM TAXATION ONLY.



S.W. 1/4, Sec. 8, T.3N.,R.5W., S.B.B.&M.

City of Hesperia
Hesperia Unified
Tax Rate Area
20121,79072

0357-76



Parcel Map No. 18605, P.M. 242/68-69
Parcel Map No. 18546, P.M. 233/48-49
Parcel Map No. 15614, P.M. 197/44-45
Parcel Map No. 9980, P.M. 116/61-62

October 2024 RU

Assessor's Map
Book 0357 Page 76
San Bernardino County

REVISED