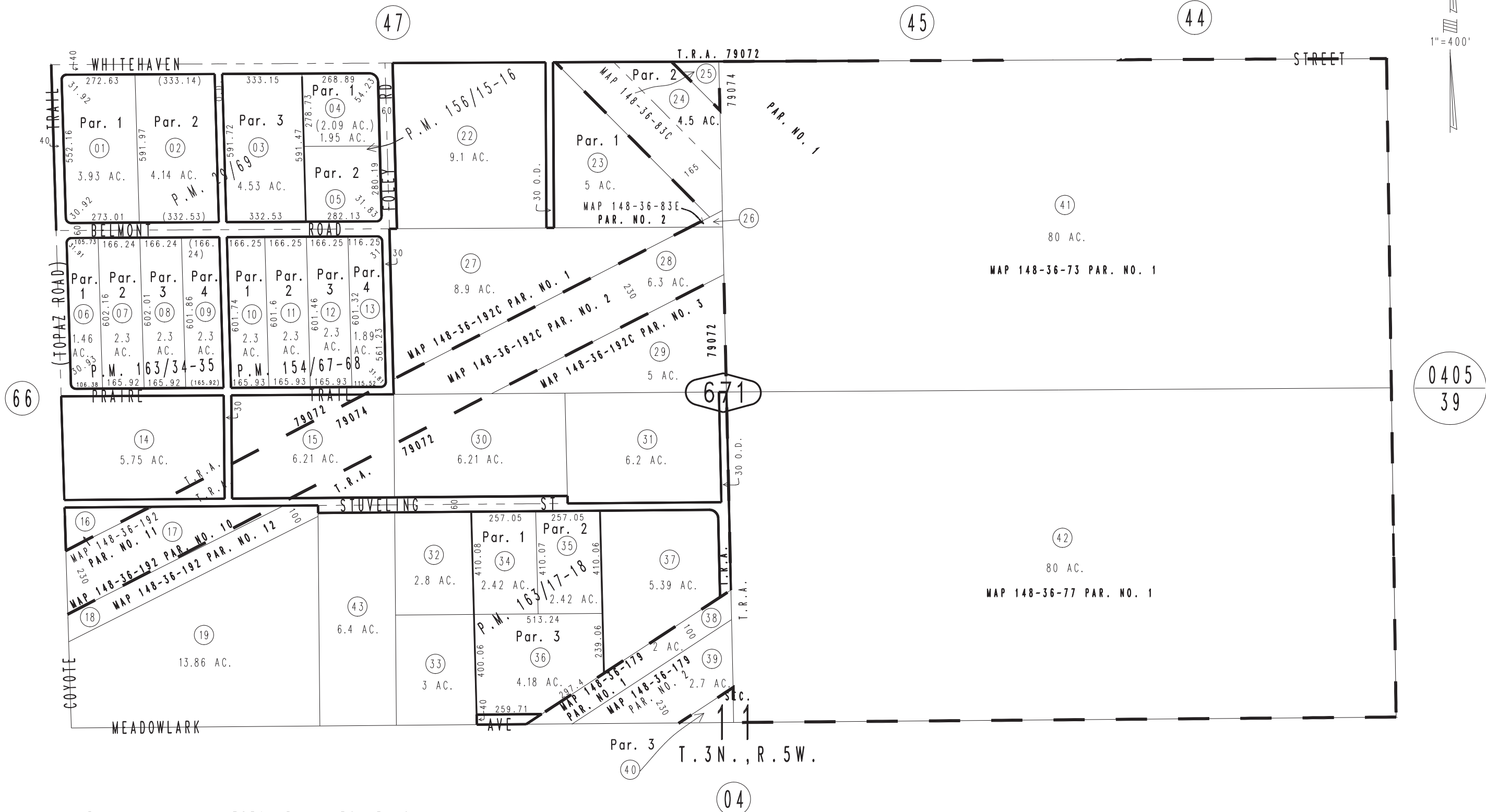


THIS MAP IS FOR THE PURPOSE OF AD VALOREM TAXATION ONLY.

N.1/2 Sec.11, T.3N.,R.5W., S.B.B.&M.

Hesperia Unified Tax Rate Area 79072 79074

0357-67



Parcel Map No. 13259, P.M. 156/15-16  
Parcel Map No. 13031, P.M. 154/67-68  
Parcel Map No. 13566, P.M. 163/34-35  
Parcel Map No. 13244, P.M. 163/17-18  
Ptn. Parcel Map No. 3204, P.M. 29/69

April 2004

Assessor's Map Book 0357 Page 67 San Bernardino County

REVISED 01/22/14 BK-MC