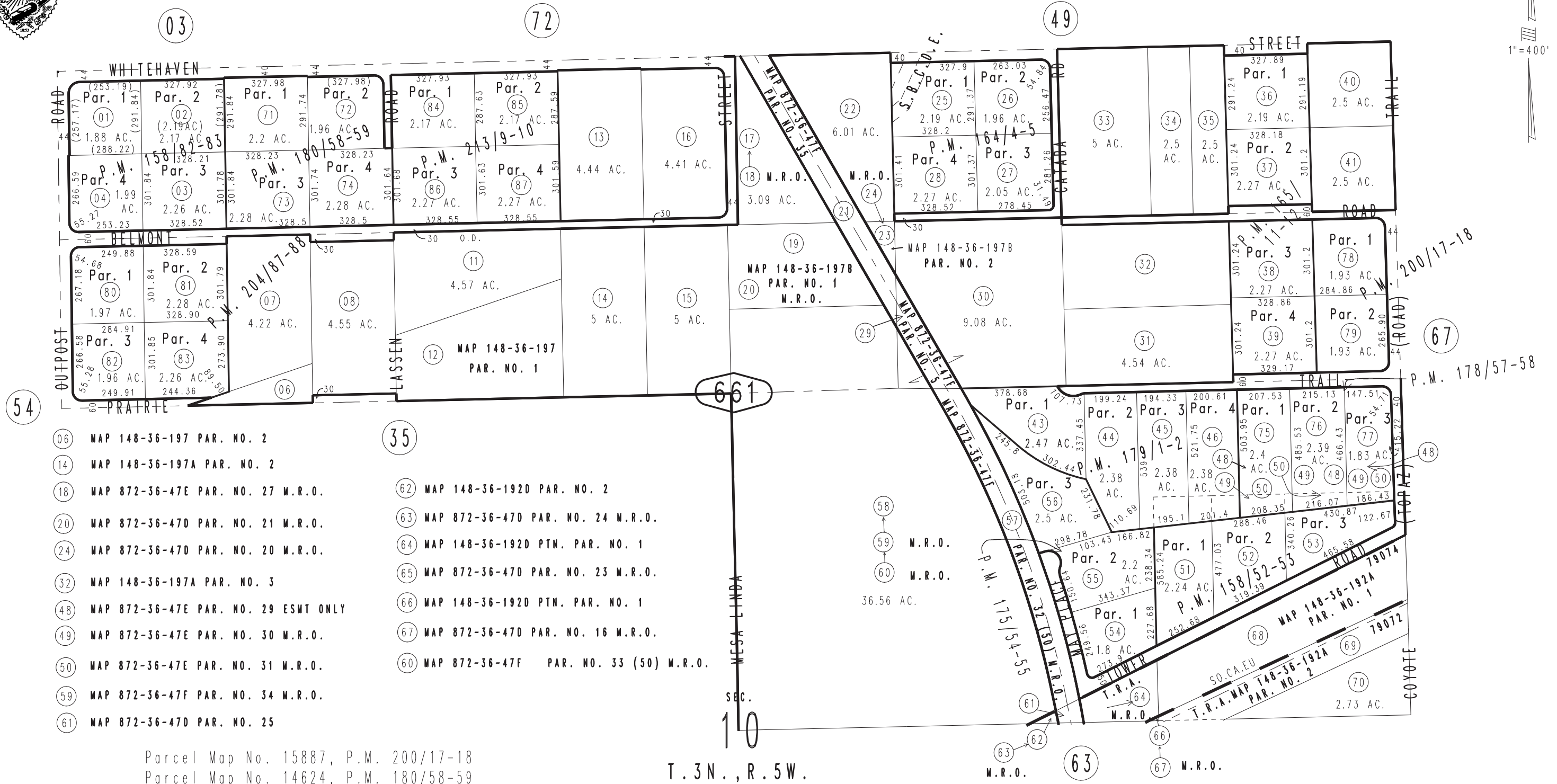


THIS MAP IS FOR THE PURPOSE OF AD VALOREM TAXATION ONLY.

Ptn. N.1/2 Sec.10, T.3N.,R.5W., S.B.B.&M

Hesperia Unified Tax Rate Area 79072,79074

0357-66



- 06 MAP 148-36-197 PAR. NO. 2
- 14 MAP 148-36-197A PAR. NO. 2
- 18 MAP 872-36-47E PAR. NO. 27 M.R.O.
- 20 MAP 872-36-47D PAR. NO. 21 M.R.O.
- 24 MAP 872-36-47D PAR. NO. 20 M.R.O.
- 32 MAP 148-36-197A PAR. NO. 3
- 48 MAP 872-36-47E PAR. NO. 29 ESMT ONLY
- 49 MAP 872-36-47E PAR. NO. 30 M.R.O.
- 50 MAP 872-36-47E PAR. NO. 31 M.R.O.
- 59 MAP 872-36-47F PAR. NO. 34 M.R.O.
- 61 MAP 872-36-47D PAR. NO. 25
- 35
- 62 MAP 148-36-192D PAR. NO. 2
- 63 MAP 872-36-47D PAR. NO. 24 M.R.O.
- 64 MAP 148-36-192D PTN. PAR. NO. 1
- 65 MAP 872-36-47D PAR. NO. 23 M.R.O.
- 66 MAP 148-36-192D PTN. PAR. NO. 1
- 67 MAP 872-36-47D PAR. NO. 16 M.R.O.
- 60 MAP 872-36-47F PAR. NO. 33 (50) M.R.O.

Parcel Map No. 15887, P.M. 200/17-18
 Parcel Map No. 14624, P.M. 180/58-59
 Parcel Map No. 14768, P.M. 179/1-2
 Parcel Map No. 14753, P.M. 178/57-58
 Ptn. Parcel Map No. 14514, P.M. 175/54-55
 Parcel Map No. 13951, P.M. 165/11-12
 Parcel Map No. 13835, P.M. 164/4-5
 Parcel Map No. 13055, P.M. 158/82-83
 Ptn. Parcel Map No. 13349, P.M. 158/52-53

Parcel Map No. 16872, P.M. 213/9-10
 Parcel Map No. 16226, P.M. 204/87-88

April 2004

Assessor's Map
 Book 0357 Page 66
 San Bernardino County

REVISED
 11/04/22 KA
 03/06/23 JH