

THIS MAP IS FOR THE PURPOSE OF AD VALOREM TAXATION ONLY.

N.1/2, Fractional Sec.4, T.3N.,R.5W., S.B.B.&M.

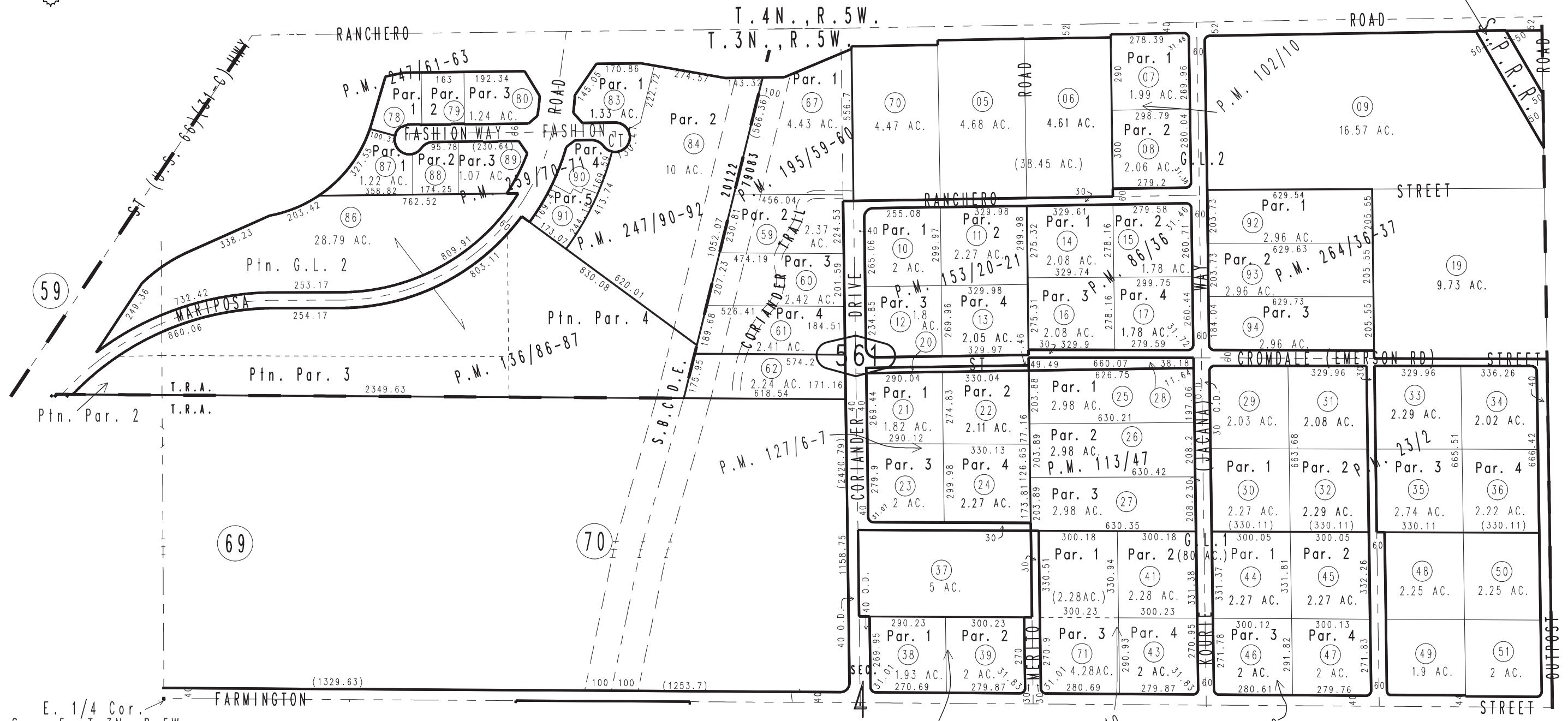
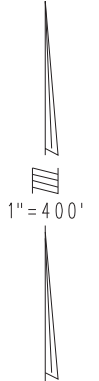
City of Hesperia
Hesperia Unified
Tax Rate Area
20122 79083

0357-56



3039
44

MAP 872-36-460
PAR. NO. 11



E. 1/4 Cor.
Sec. 5, T.3N., R.5W.

- | | |
|---|---|
| Ptn. Parcel Map No. 11716, P.M. 136/86-87 | Parcel Map No. 20752, P.M. 264/36-37 |
| Parcel Map No. 11314, P.M. 127/6-7 | Parcel Map No. 20259, P.M. 249/70-71 |
| Parcel Map No. 9499, P.M. 113/47 | Ptn. Parcel Map No. 19781, P.M. 247/90-92 |
| Parcel Map No. 9388, P.M. 102/10 | Ptn. Parcel Map No. 19723, P.M. 246/61-63 |
| Parcel Map No. 9235, P.M. 97/51-52 | Parcel Map No. 15386, P.M. 195/59-60 |
| Parcel Map No. 8338, P.M. 86/36 | Parcel Map No. 13834, P.M. 166/39-40 |
| Parcel Map No. 7976, P.M. 81/99-100 | Parcel Map No. 13098, P.M. 153/20-21 |
| Parcel Map No. 2563, P.M. 23/2 | |

REVISED
02/17/23 KA
08/02/24 RU
09/12/24 KA
01/16/25 KA