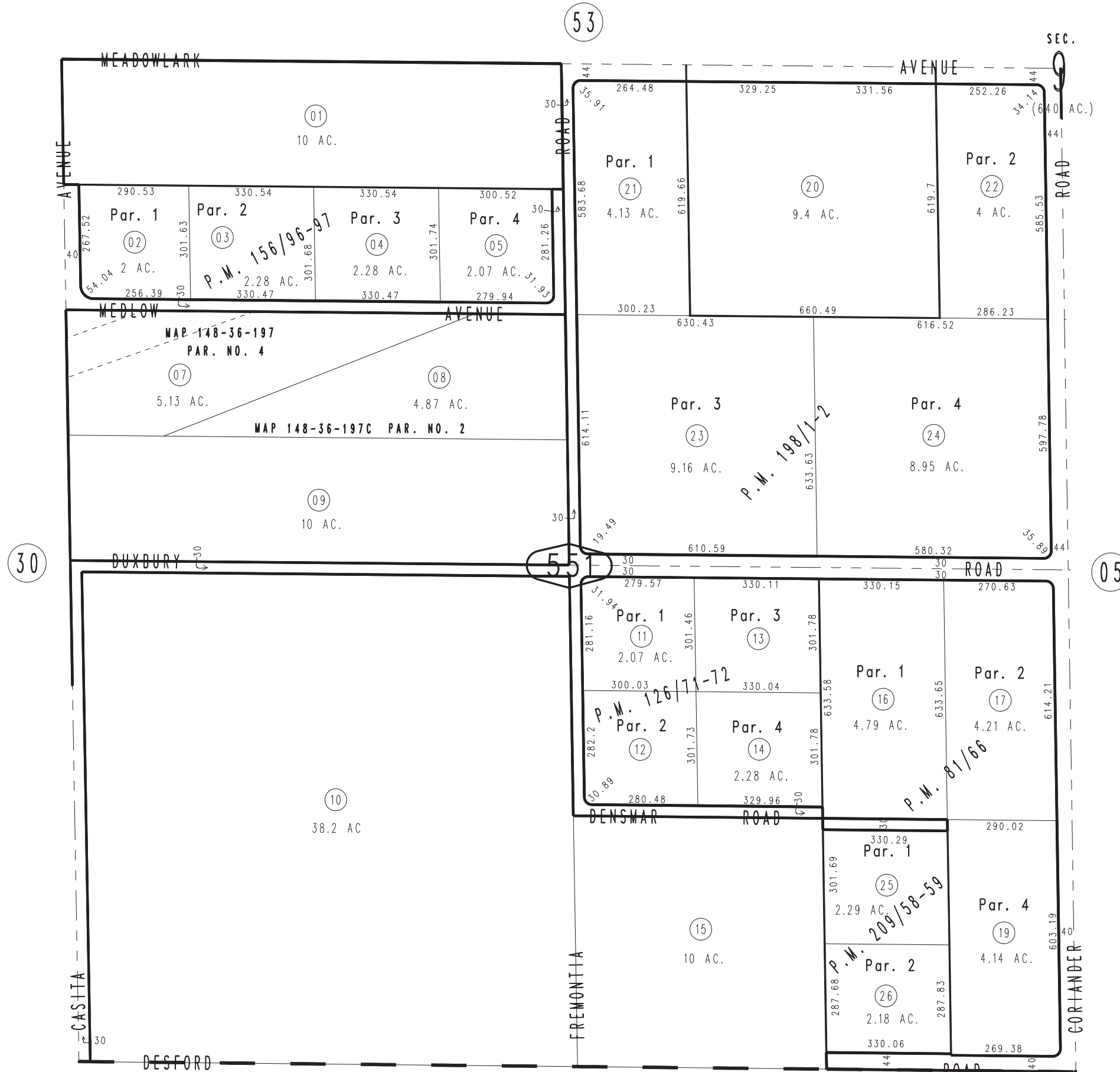
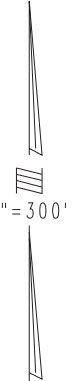


THIS MAP IS FOR THE PURPOSE OF AD VALOREM TAXATION ONLY.

S.W.1/4 Sec.9, T.3N.,R.5W., S.B.B.&M.

Hesperia Unified
Tax Rate Area
79072

0357-55



Parcel Map No. 13333, P.M. 156/96-97
Parcel Map No. 10632, P.M. 126/71-72
Parcel Map No. 7932, P.M. 81/66

Parcel Map No. 15801, P.M. 198/1-2 Parcel Map No. 16529, P.M. 209/58-59

Assessor's Map
Book 0357 Page 55
San Bernardino County

REVISED
12/06/05 KC