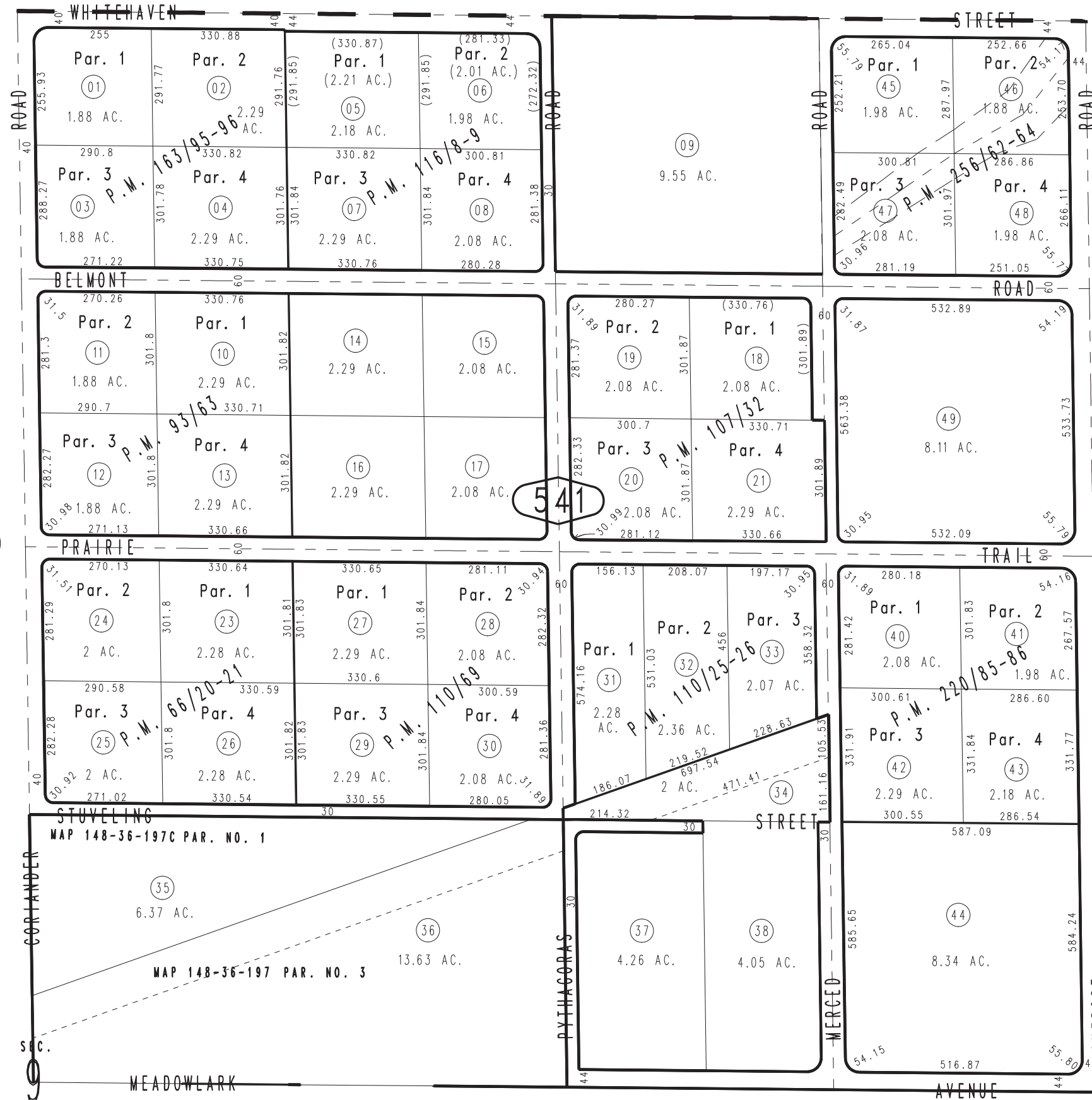


THIS MAP IS FOR THE PURPOSE OF AD VALOREM TAXATION ONLY.

N.E.1/4 Sec.9, T.3N.,R.5W., S.B.B.&M.

Hesperia Unified Tax Rate Area 79072

0357-54

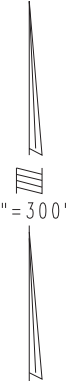


66

35

- Parcel Map No. 19212, P.M. 256/62-64
- Parcel Map No. 17367, P.M. 220/85-86
- Parcel Map No. 12955, P.M. 163/95-96
- Parcel Map No. 10515, P.M. 116/8-9
- Parcel Map No. 10206, P.M. 110/69
- Parcel Map No. 10063, P.M. 110/25-26
- Parcel Map No. 9999, P.M. 107/32
- Parcel Map No. 8931, P.M. 93/63
- Parcel Map No. 6786, P.M. 66/20-21

Assessor's Map Book 0357 Page 54 San Bernardino County



(640 AC.)

05