

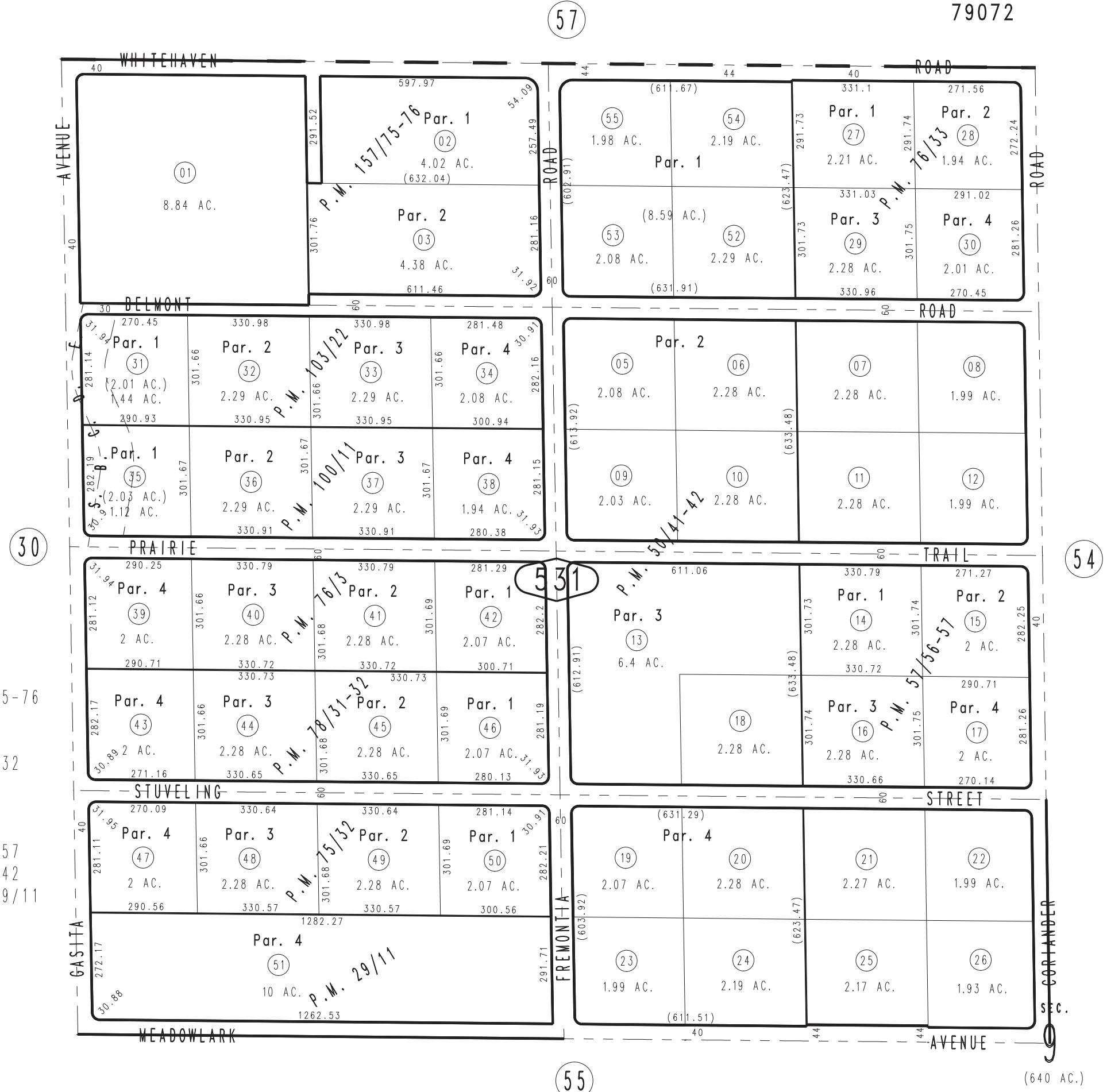
THIS MAP IS FOR THE PURPOSE
OF AD VALOREM TAXATION ONLY.



N.W.1/4, Sec.9, T.3N.,R.5W., S.B.B.&M.

Hesperia Unified
Tax Rate Area
79072

0357-53



- Parcel Map No. 13099, P.M. 157/75-76
- Parcel Map No. 9643, P.M. 103/22
- Parcel Map No. 9379, P.M. 100/11
- Parcel Map No. 7576, P.M. 78/31-32
- Parcel Map No. 7527, P.M. 76/33
- Parcel Map No. 7439, P.M. 76/3
- Parcel Map No. 7440, P.M. 75/32
- Parcel Map No. 6072, P.M. 57/56-57
- Parcel Map No. 5258, P.M. 50/41-42
- Ptn. Parcel Map No. 3170, P.M. 29/11

Assessor's Map
Book 0357 Page 53
San Bernardino County

REVISED
02/05/07 KC
05/22/08 RU