

THIS MAP IS FOR THE PURPOSE OF AD VALOREM TAXATION ONLY.



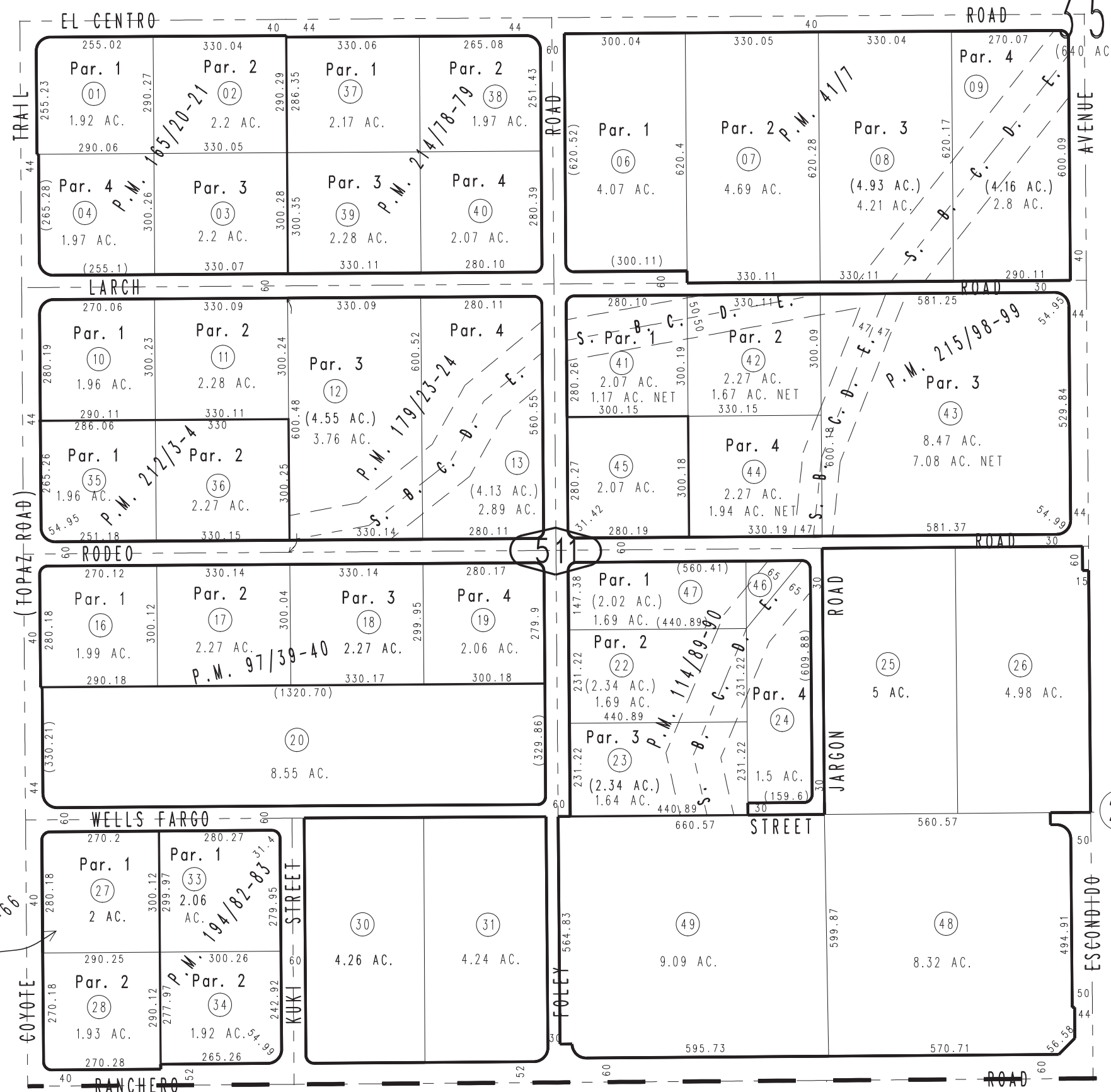
S.W.1/4, Sec.35, T.4N.,R.5W., S.B.B.&M.

Hesperia Unified
Tax Rate Area
79051

0357-51

02

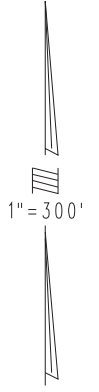
3039
52



26

27

- Parcel Map No. 16789, P.M. 215/98-99
- Parcel Map No. 17039, P.M. 214/78-79
- Parcel Map No. 16866, P.M. 212/3-4
- Parcel Map No. 15660, P.M. 194/82-83
- Parcel Map No. 13940, P.M. 165/20-21
- Parcel Map No. 9592, P.M. 114/89-90
- Parcel Map No. 9191, P.M. 105/26-27
- Amend P.M. 179/23-24



Parcel Map No. 9292, P.M. 101/65-66
 Parcel Map No. 9074, P.M. 97/39-40
 Parcel Map No. 3584, P.M. 41/7

40

41

Assessor's Map
 Book 0357 Page 51
 San Bernardino County

REVISED
 02/06/20 KA
 02/18/21 GW