

THIS MAP IS FOR THE PURPOSE OF AD VALOREM TAXATION ONLY.



N.E.1/4, Sec.35, T.4N.,R.5W., S.B.B.&M.

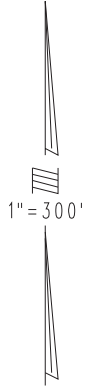
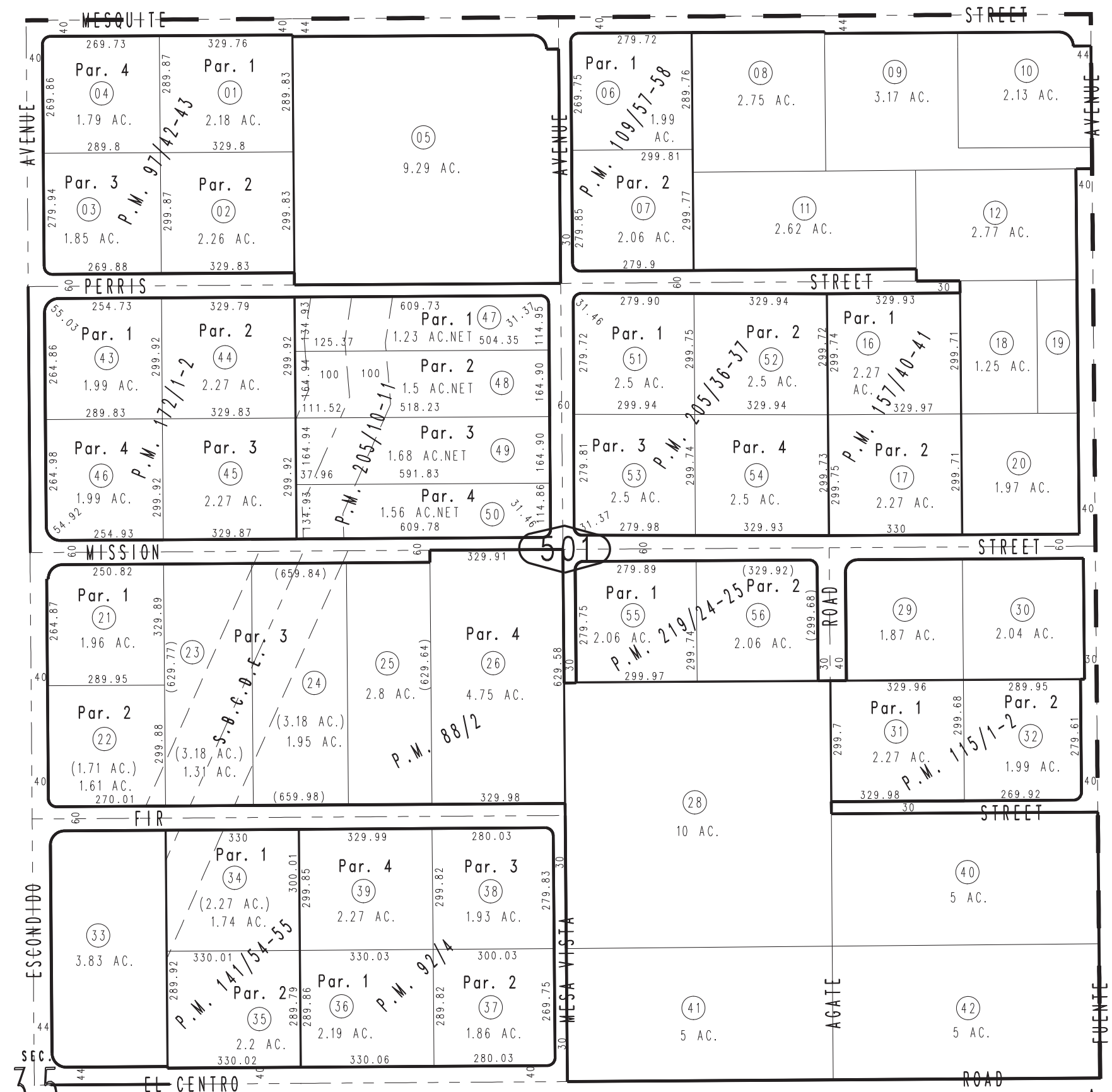
Hesperia Unified Tax Rate Area 79051

0357-50

3046
06

02

0405
37



- Parcel Map No. 17845, P.M. 219/24-25
- Parcel Map No. 16352, P.M. 205/36-37
- Parcel Map No. 16345, P.M. 205/10-11
- Parcel Map No. 14471, P.M. 172/1-2
- Parcel Map No. 13179, P.M. 157/40-41
- Parcel Map No. 12214, P.M. 141/54-55
- Parcel Map No. 10493, P.M. 115/1-2
- Parcel Map No. 10187, P.M. 109/57-58
- Parcel Map No. 9244, P.M. 97/42-43
- Parcel Map No. 8607, P.M. 92/4
- Parcel Map No. 8492, P.M. 88/2

35
(640 AC.)

26

REVISED
07/08/10 KA
07/28/10 KA
07/29/10 KA
07/26/11 KA