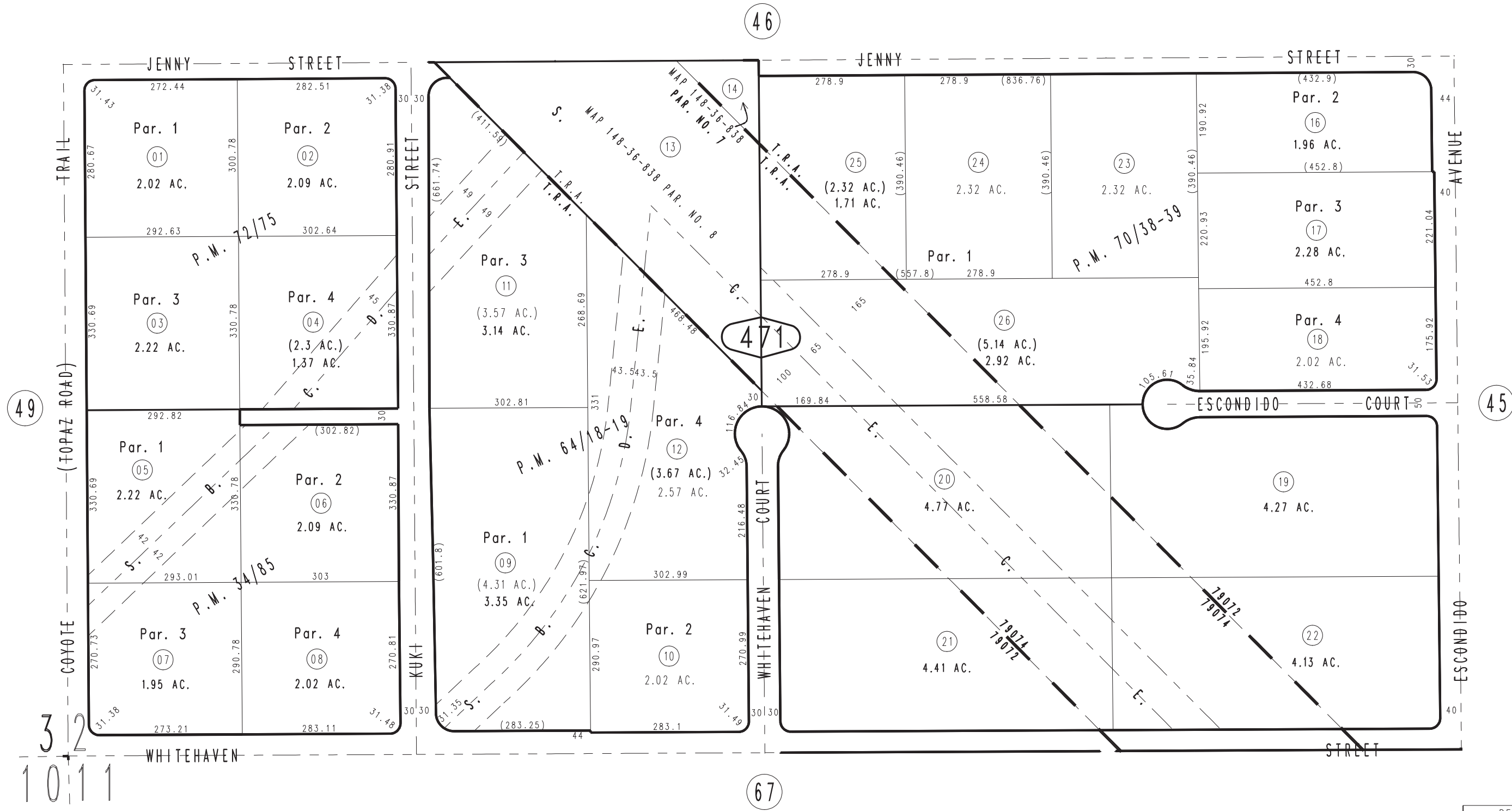


THIS MAP IS FOR THE PURPOSE
OF AD VALOREM TAXATION ONLY.

S.1/2, S.W.1/4, Section 2, T.3N.,R.5W., S.B.M.

Hesperia Unified
Tax Rate Area
79072,79074

0357-47



Parcel Map No. 7239, P.M. 72/75
 Parcel Map No. 7107, P.M. 70/38-39
 Parcel Map No. 6501, P.M. 64/18-19
 Parcel Map No. 3699, P.M. 34/85

Assessor's Map
 Book 0357 Page 47
 San Bernardino County

REVISED
 02/15/24 KA