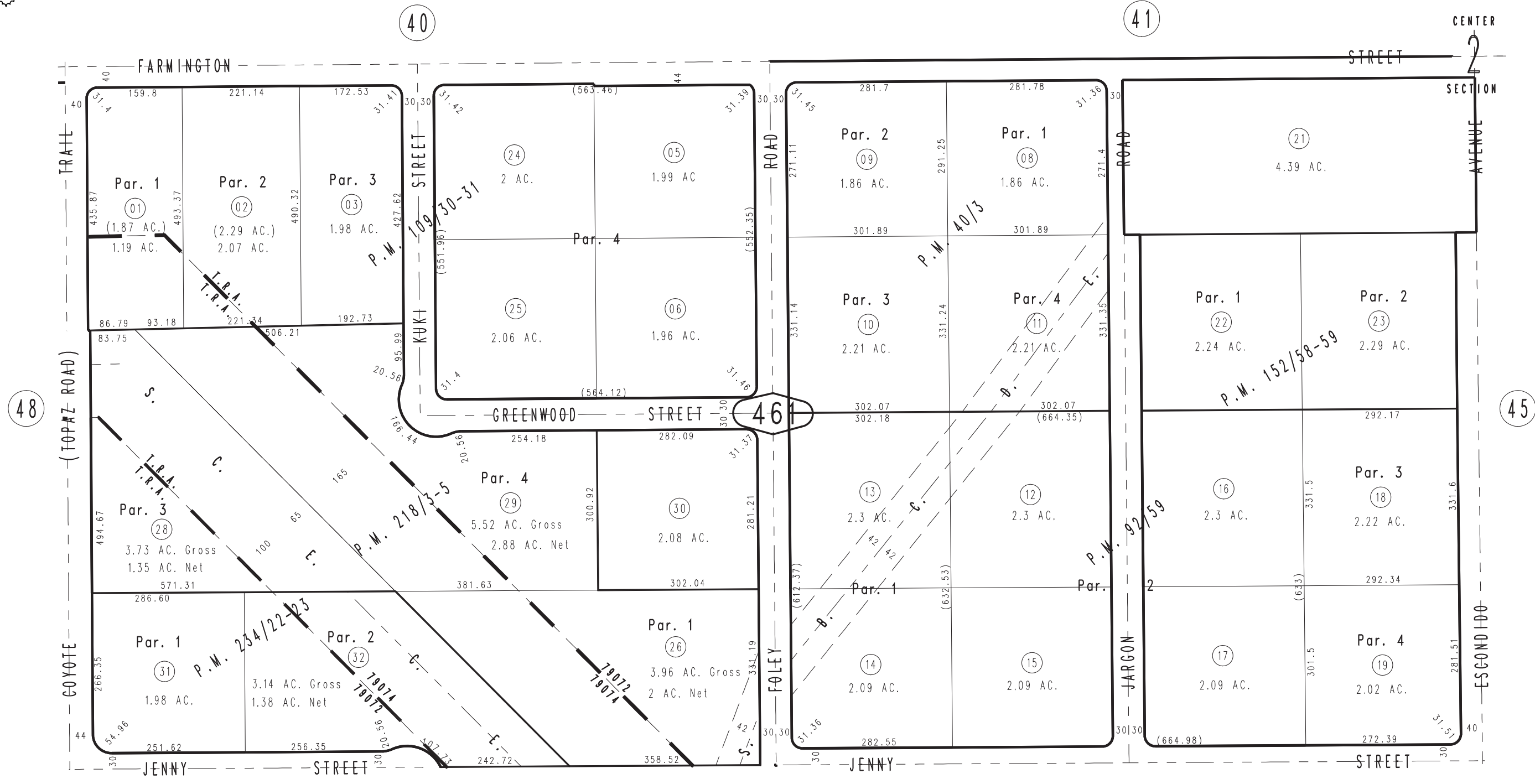


THIS MAP IS FOR THE PURPOSE OF AD VALOREM TAXATION ONLY.

N.1/2, S.W.1/4, Sec.2, T.3N.,R.5W., S.B.M.

Hesperia Unified Tax Rate Area 79072 79074

0357-46



- Parcel Map No. 19068, P.M. 234/22-23
- Parcel Map No. 17169, P.M. 218/3-5
- Parcel Map No. 12870, P.M. 152/58-59
- Parcel Map No. 9979, P.M. 109/30-31
- Parcel Map No. 8799, P.M. 92/59
- Parcel Map No. 4016, P.M. 40/3

April 2004

Assessor's Map Book 0357 Page 46 San Bernardino County

REVISED 06/04/08 RM 08/19/09 GW