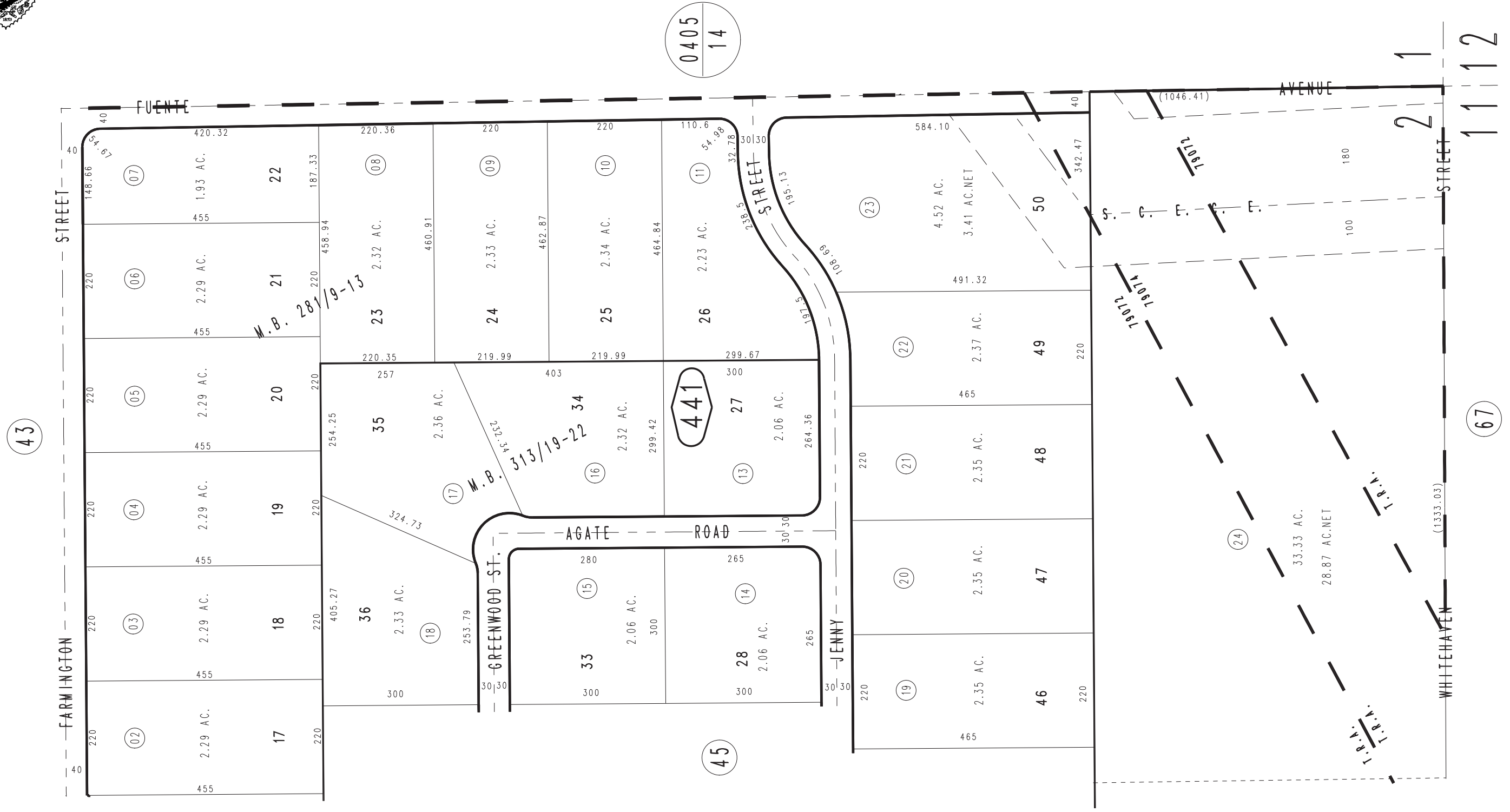
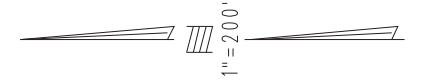


THIS MAP IS FOR THE PURPOSE
OF AD VALOREM TAXATION ONLY.

E.1/2, S.E.1/4, Section 2, T.3N.,R.5W., S.B.M.

Hesperia Unified
Tax Rate Area
79072

0357-44



April 2004

Ptn. Tract No. 15831-2, M.B. 313/19-22
Ptn. Tract No. 15831-1, M.B. 281/9-13

Assessor's Map
Book 0357 Page 44
San Bernardino County

REVISED
02/08/06 KC