

THIS MAP IS FOR THE PURPOSE
OF AD VALOREM TAXATION ONLY.

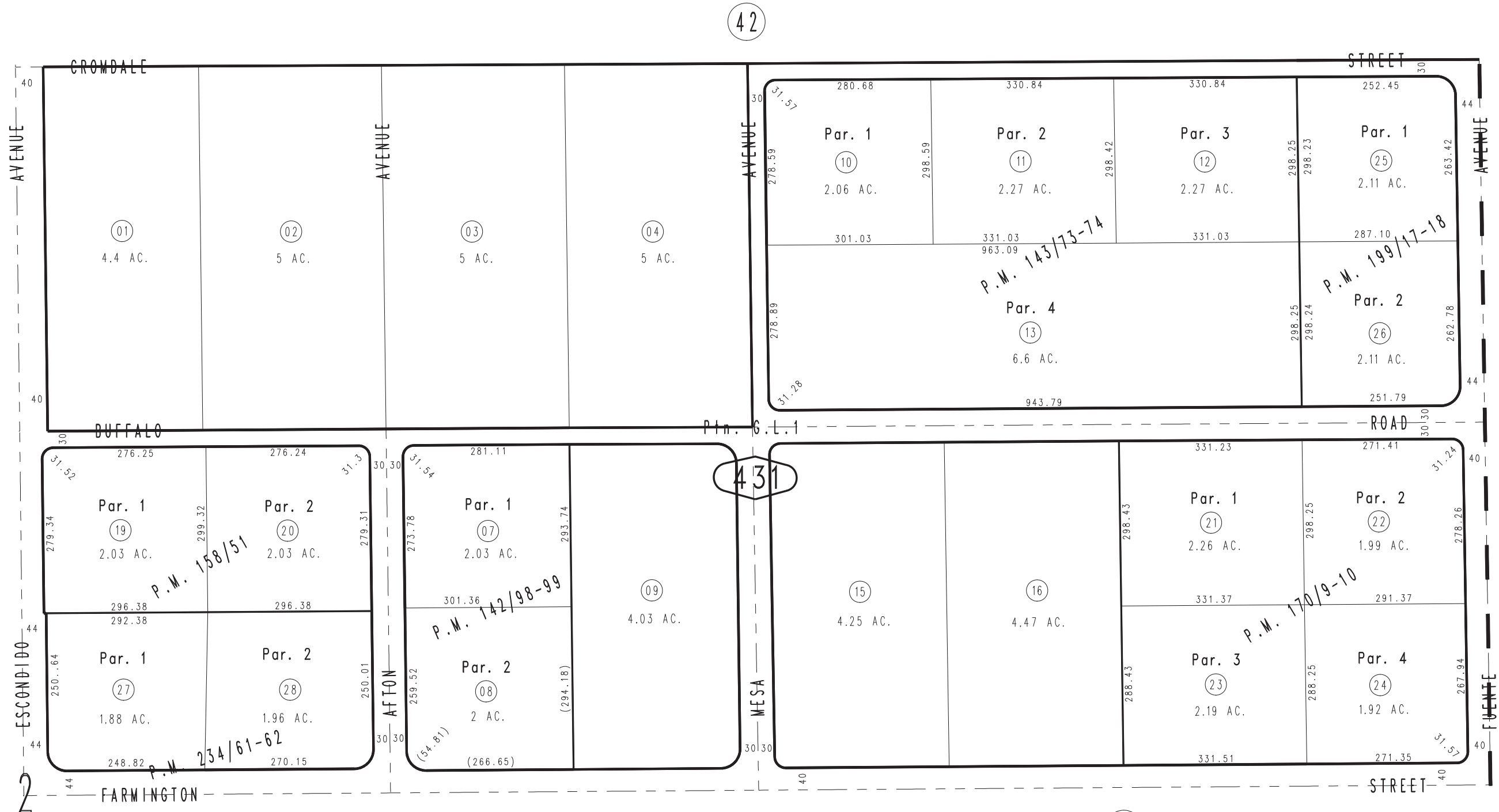
S.1/2, N.E.1/4, Section 2, T.3N.,R.5W., S.B.M.

Hesperia Unified
Tax Rate Area
79072

0357-43



1" = 200'



405
73

- Parcel Map No. 18342, P.M. 234/61-62
- Parcel Map No. 15885, P.M. 199/17-18
- Parcel Map No. 14194, P.M. 170/9-10
- Parcel Map No. 13282, P.M. 158/51
- Parcel Map No. 12891, P.M. 143/73-74
- Parcel Map No. 12027, P.M. 142/98-99

April 2004

Assessor's Map
Book 0357 Page 43
San Bernardino County

REVISED
01/25/23 KA