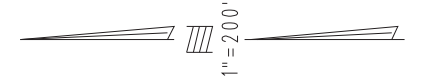


THIS MAP IS FOR THE PURPOSE OF AD VALOREM TAXATION ONLY.

Portion N.E.1/4, Sec.3, T.3N.,R.5W., S.B.M.

Hesperia Unified Tax Rate Area 79072

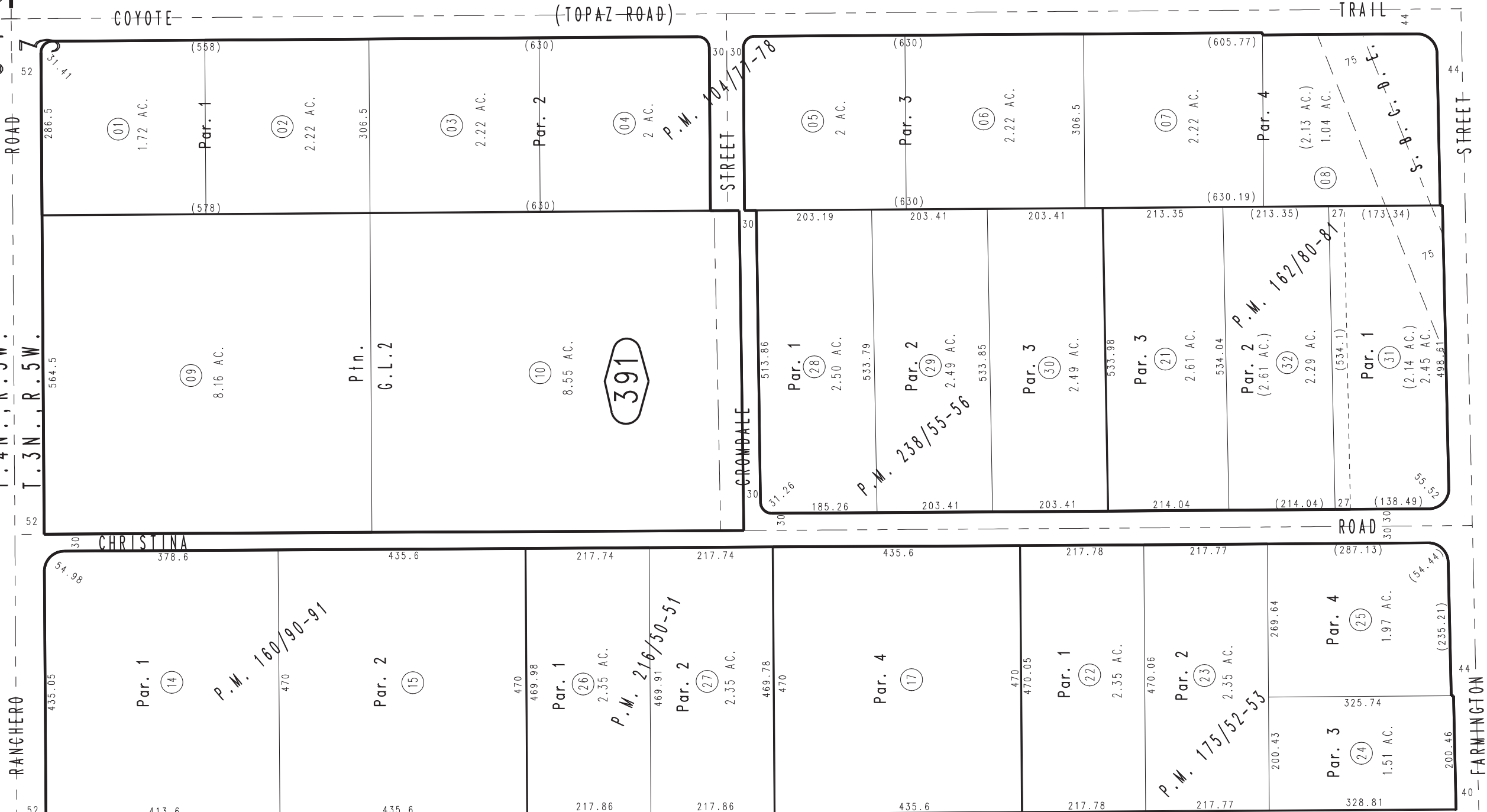
0357-39



3039 / 52

3435 / 2

T. 4 N., R. 5 W.
T. 3 N., R. 5 W.



- Parcel Map No. 16337, P.M. 238/55-56
- Parcel Map No. 17326, P.M. 216/50-51
- Parcel Map No. 14404, P.M. 175/52-53
- Parcel Map No. 13334, P.M. 162/80-81
- Ptn. Parcel Map No. 13323, P.M. 152/56-57, Amending Map P.M. 160/90-91
- Parcel Map No. 9714, P.M. 104/77-78

April 2004

Assessor's Map Book 0357 Page 39 San Bernardino County

REVISED 07/12/23 KA