

THIS MAP IS FOR THE PURPOSE  
OF AD VALOREM TAXATION ONLY.

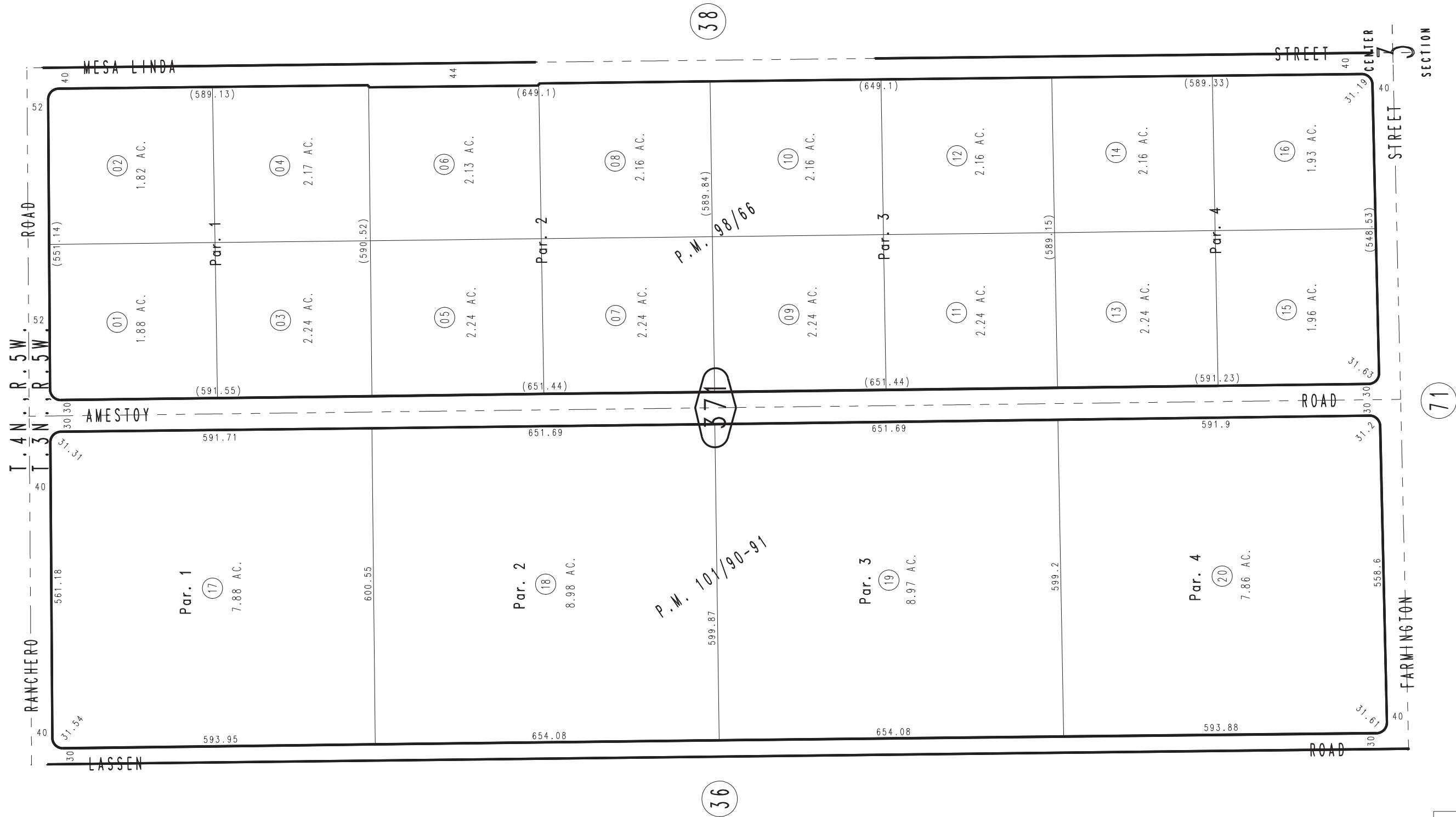
E.1/2, N.W.1/4, Section 3, T.3N.,R.5W., S.B.M.

Hesperia Unified  
Tax Rate Area  
79072

0357-37



3039  
48



April 2004

Parcel Map No. 9276, P.M. 101/90-91  
Parcel Map No. 9221, P.M. 98/66

Assessor's Map  
Book 0357 Page 37  
San Bernardino County

REVISED  
05/28/08 KA