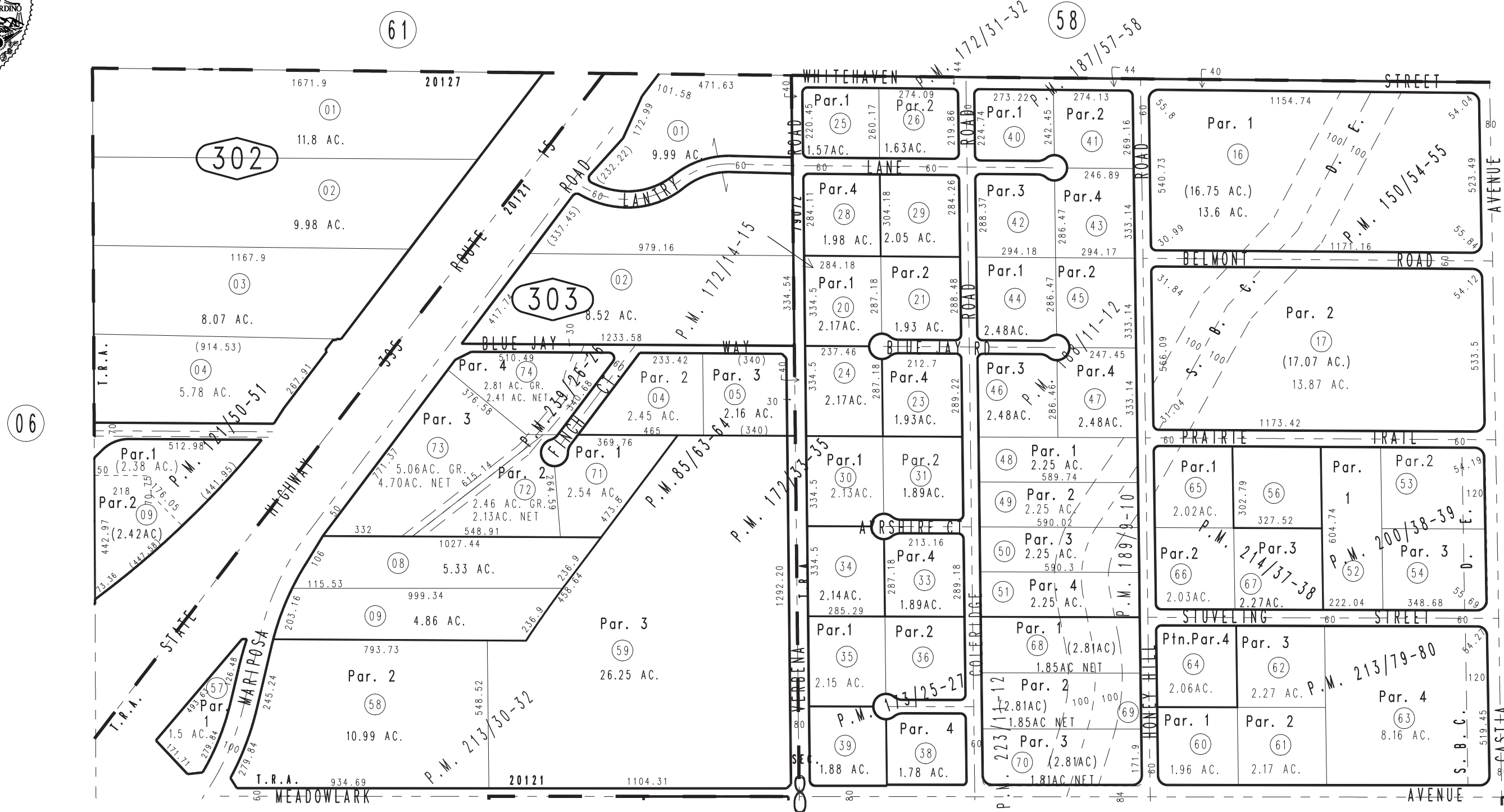


THIS MAP IS FOR THE PURPOSE OF AD VALOREM TAXATION ONLY.

Sec.8, T.3N.,R.5W., S.B.B.&M.

City of Hesperia
Hesperia Unified
Tax Rate Area
20121,20127,79072

0357-30



- Parcel Map No. 15121, P.M. 187/57-58
- Parcel Map No. 14340, P.M. 173/25-27
- Parcel Map No. 13993, P.M. 172/33-35
- Ptn. Parcel Map No. 13827, P.M. 172/31-32
- Parcel Map No. 13964, P.M. 172/14-15
- Parcel Map No. 12396, P.M. 150/54-55
- Parcel Map No. 10757, P.M. 121/50-51
- Parcel Map No. 7758, P.M. 85/63-64

- Parcel Map No. 17756, P.M. 239/25-26
- Parcel Map No. 17114, P.M. 223/11-12
- Parcel Map No. 16682, P.M. 214/37-38
- Parcel Map No. 16727, P.M. 213/79-80
- Parcel Map No. 16438, P.M. 213/30-32
- Ptn Parcel Map No. 15954, P.M. 200/38-39
- Parcel Map No. 15123, P.M. 189/9-10
- Parcel Map No. 15122, P.M. 188/11-12

April 2004

Assessor's Map
Book 0357 Page 30
San Bernardino County

REVISED
09/20/23 XM
06/07/24 RU
10/10/24 RU