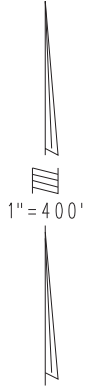
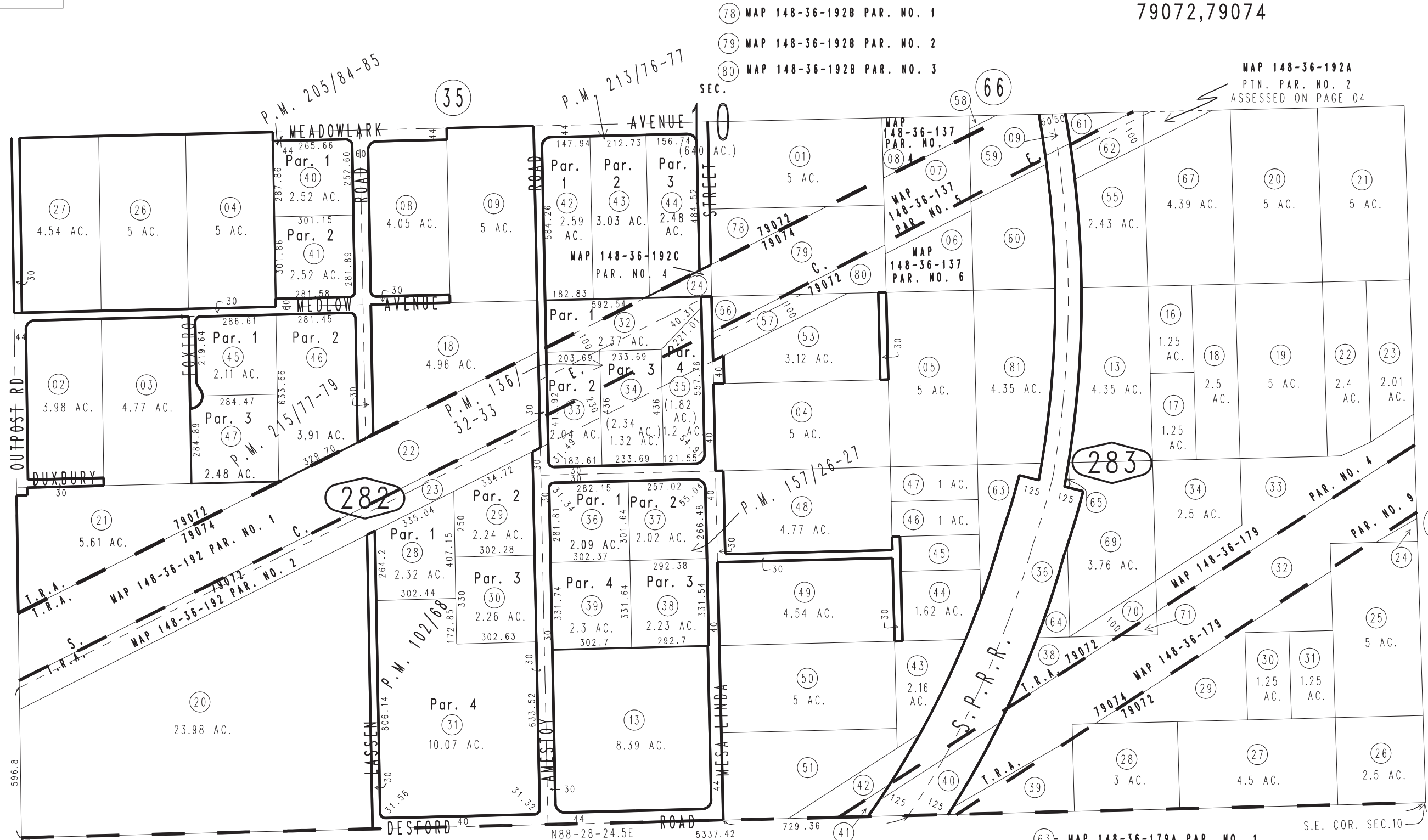


S.1/2 Sec.10, T.3N.,R.5W, S.B.B.&M.

Hesperia Unified  
Tax Rate Area  
79072,79074

0357-28

THIS MAP IS FOR THE PURPOSE  
OF AD VALOREM TAXATION ONLY.



- (09) MAP 872-36-47C PAR. NO. 17
- (36) MAP 872-36-47C PAR. NO. 18
- (40) MAP 872-36-47C PAR. NO. 19

- MAP 148-36-192 PAR. NO. 4
- MAP 148-36-192 PAR. NO. 3
- MAP 148-36-192 PAR. NO. 5
- MAP 148-36-192 PAR. NO. 6
- MAP 148-36-192 PAR. NO. 7

- (42) MAP 148-36-179 PAR. NO. 11
- (41) MAP 148-36-179 PAR. NO. 10
- (38) MAP 148-36-179 PAR. NO. 5
- (39) - MAP 148-36-179 PAR. NO. 8

- (63) MAP 148-36-179A PAR. NO. 1
- (64) MAP 148-36-179A PAR. NO. 4
- (29) MAP 148-36-179 PAR. NO. 7
- (24) MAP 148-36-179 PAR. NO. 6
- (61) MAP 148-36-192 PAR. NO. 9
- (62) MAP 148-36-192 PAR. NO. 8
- (65) MAP 148-36-179A PAR. NO. 3
- (70) MAP 148-36-179B PAR. NO. 3
- (71) MAP 148-36-179B PAR. NO.

Parcel Map No. 16425, P.M. 205/84-85  
Parcel Map No. 13252, P.M. 157/26-27  
Parcel Map No. 11815, P.M. 136/32-33  
Parcel Map No. 9492, P.M. 102/68

Parcel Map No. 16864, P.M. 215/77-79  
Parcel Map No. 17164, P.M. 213/76-77

Assessor's Map  
Book 0357 Page 28  
San Bernardino County