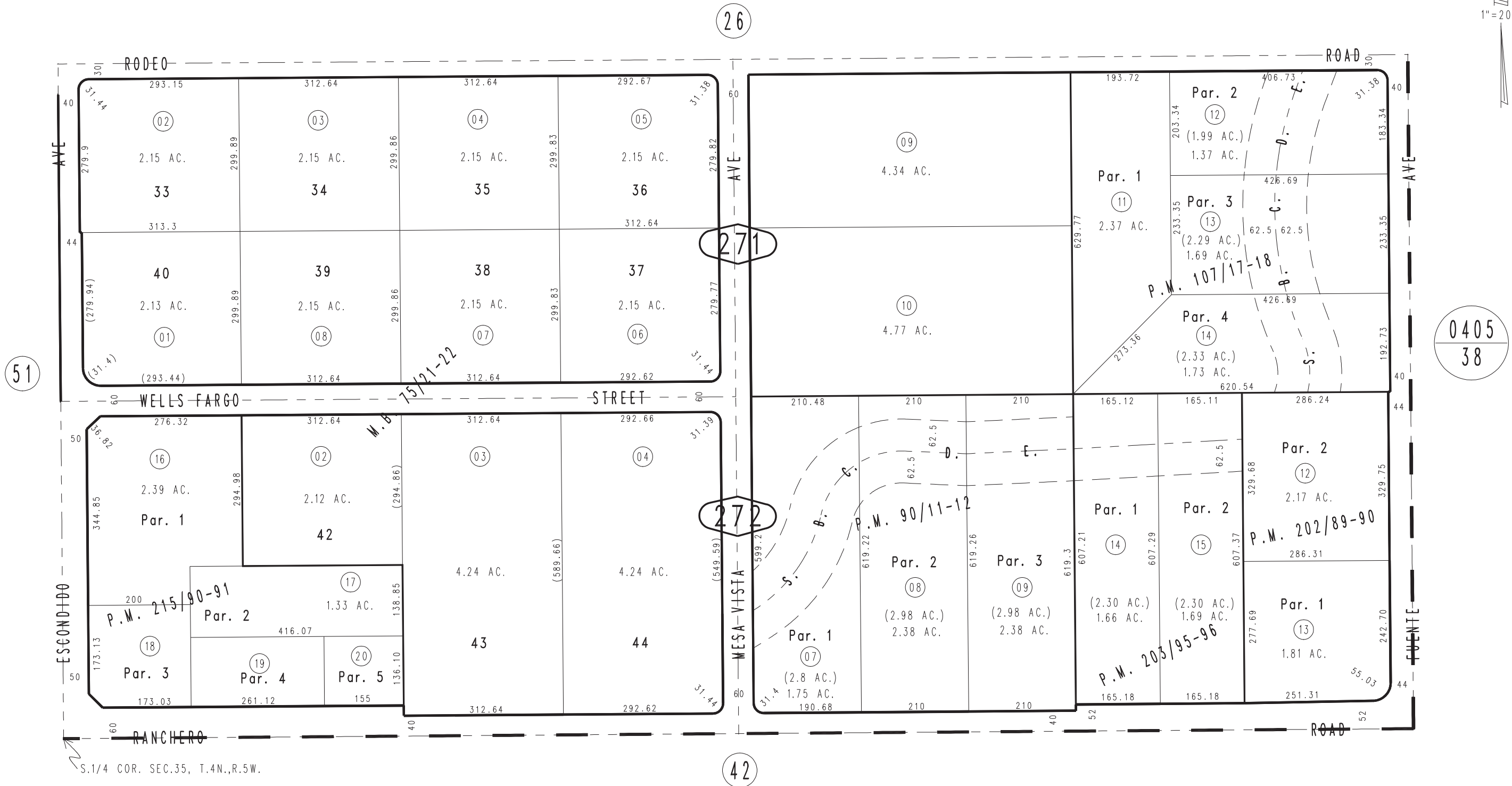


THIS MAP IS FOR THE PURPOSE OF AD VALOREM TAXATION ONLY.

Ptn. Tract No. 5888, M.B. 75/21-22

Hesperia Unified Tax Rate Area 79051

0357-27



S.1/4 COR. SEC.35, T.4N.,R.5W.

- Parcel Map No. 17103, P.M. 215/90-91
- Parcel Map No. 16022, P.M. 203/95-96
- Parcel Map No. 15727, P.M. 202/89-90
- Parcel Map No. 9853, P.M. 107/17-18
- Parcel Map No. 8437, P.M. 90/11-12

April 2004

Ptn. S.E.1/4, Sec. 35 T.4N., R.5W.

Assessor's Map Book 0357 Page 27 San Bernardino County

REVISED 09/30/24 CA