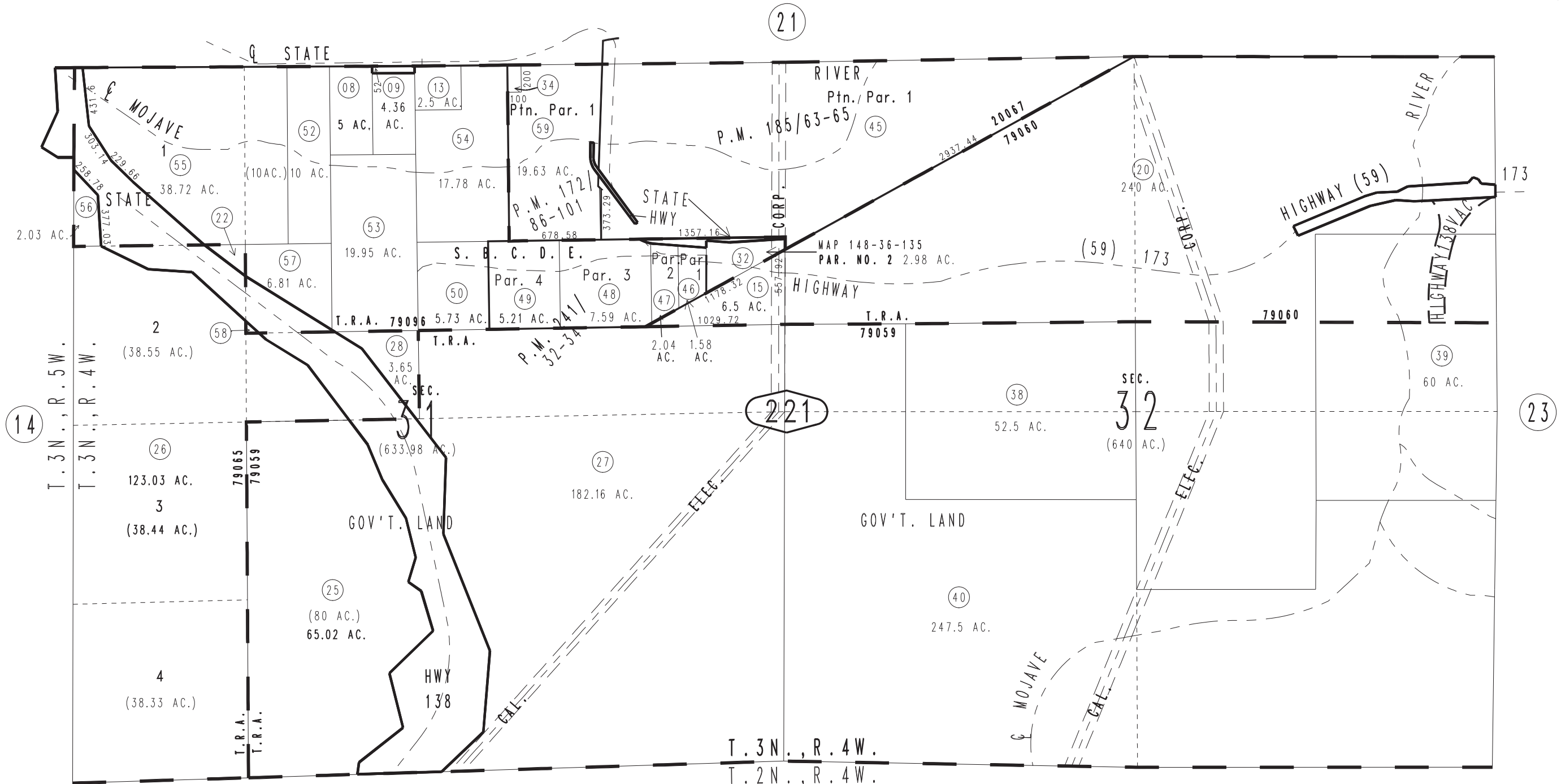


THIS MAP IS FOR THE PURPOSE
OF AD VALOREM TAXATION ONLY.

Fractional Sec.31 & Sec.32, T.3N.,R.4W., S.B.B.&M.

City of Hesperia
Hesperia Unified
Tax Rate Area
20067,79059,79060
79065,79096

0357-22



0341
01

0341
07

Parcel Map No. 17395, P.M. 241/32-34
Ptn. Parcel Map No. 15178, P.M. 185/63-65
Ptn. Parcel Map No. 13471, P.M. 172/86-101

Assessor's Map
Book 0357 Page 22
San Bernardino County

REVISED
08/23/19 KC
11/25/19 KA
03/30/21 GW